

# RNAV (GPS) RWY 14

TERRE HAUTE RGNL (HUF)

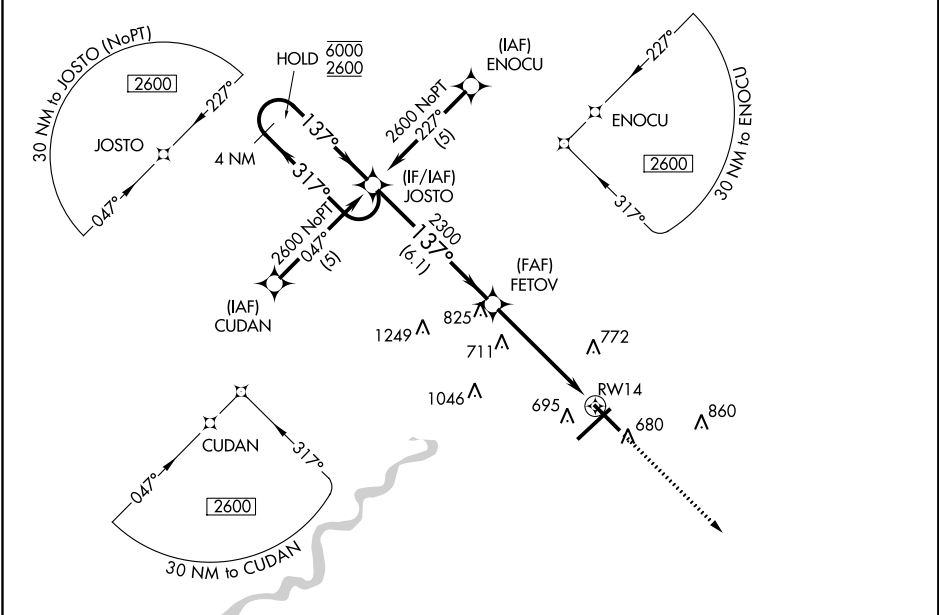
APP CRS	Rwy Idg	<b>7200</b>
<b>137°</b>	TDZE	<b>579</b>
	Apt Elev	<b>589</b>

RNP APCH.

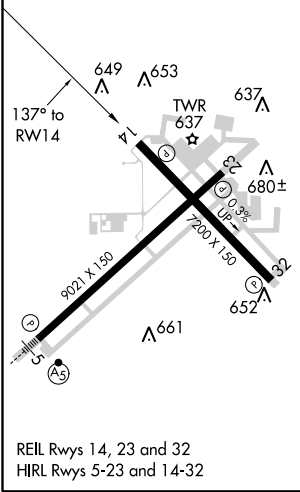
**⚠** VDP NA when using Paris altimeter setting. When local altimeter setting not received, use Paris altimeter setting and increase all MDA 80 feet, increase LNAV and Circling Cat C/D visibility ¼ SM. Rwy 14 helicopter visibility reduction below ¾ SM NA.

**MISSED APPROACH:**  
Climb to 2600 direct CORIE and hold.

ATIS <b>127.5 269.375</b>	HULMAN APP CON <b>125.45 339.8</b>	HULMAN TOWER <b>134.725 239.0</b>	GND CON <b>121.6 348.6</b>
------------------------------	---------------------------------------	--------------------------------------	-------------------------------



ELEV 589	<b>D</b>	TDZE 579
----------	----------	----------



**1549**

4 NM Holding Pattern

JOSTO

6000 ← 317°

2600 → 137°

FETOV

2300

3.04° TCH 55

\* 1.2 NM to RWY 14

6.1 NM      4 NM      1.2

2600	CORIE
↑	✦
* LNAV only.	

VGSI and descent angles not coincident (VGSI Angle 2.75/TCH 59).				
CATEGORY	A	B	C	D
LNAV MDA	1140-1	561 (600-1)	1140-1½	561 (600-1½)
<b>C</b> CIRCLING	1140-1	551 (600-1)	1220-1¾ 631 (700-1¾)	1220-2 631 (700-2)

EC-2, 17 JUN 2021 to 15 JUL 2021

EC-2, 17 JUN 2021 to 15 JUL 2021