

VORTAC SGF 116.9 Chan 116	APP CRS 196°	Rwy ldg TDZE 1262 Apt Elev 1268	7003
-----------------------------------------------	------------------------	-----------------------------------------------------	-------------

VOR or TACAN RWY 20

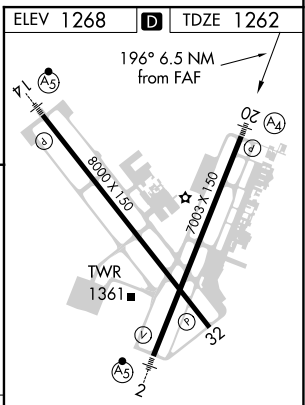
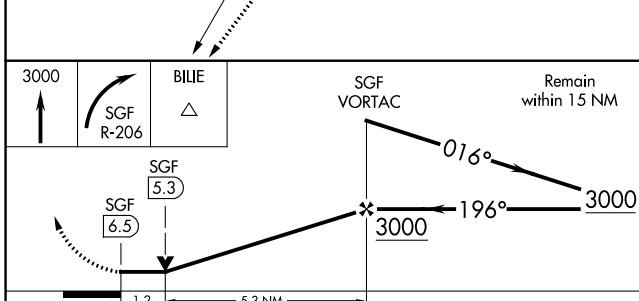
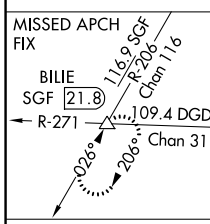
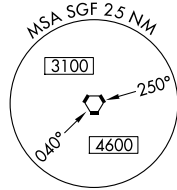
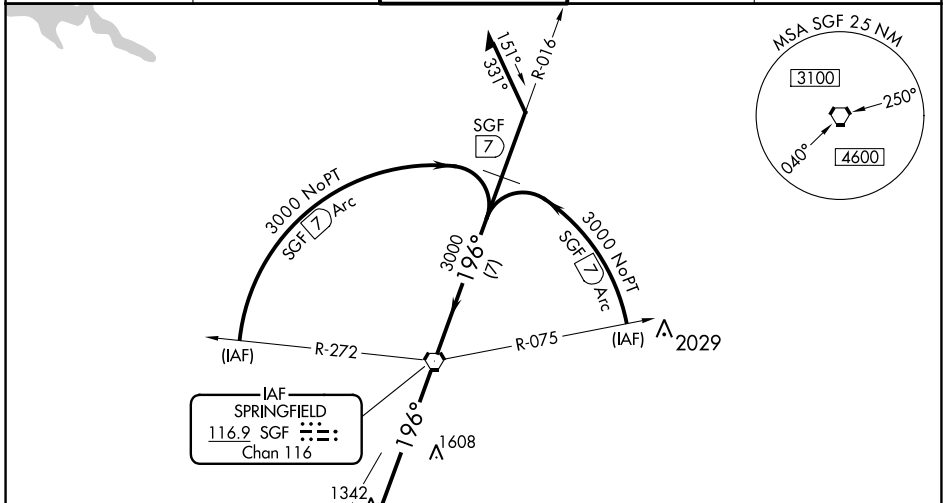
SPRINGFIELD-BRANSON NTL (SGF)

⚠ Inoperative table does not apply to Cat C. Helicopter visibility reduction below 3/4 SM not authorized. When local altimeter setting not received, use Monett altimeter setting and increase all MDA 100 feet, increase S-20 Cat C/D/E visibility 1/4 mile, increase Circling Cat C/E visibility 1/4 mile. VDP NA when using Monett altimeter setting.

MALS
④ = ③

MISSED APPROACH: Climb to 3000 then right turn to intercept SGF R-206 to BILLIE INT/SGF 21.8 DME and hold.

ATIS 135.125	SPRINGFIELD APP CON 121.1 290.5	SPRINGFIELD TOWER 119.9 257.8	GND CON 121.9 251.15	CLNC DEL 123.675
-------------------------------	--------------------------------------------------	------------------------------------------------	---------------------------------------	-----------------------------------



CATEGORY	A	B	C	D	E
S-20	1700-3/4 438 (500-3/4)	1700-1 438 (500-1 1/4)	1700-1 1/2 438 (500-1 1/2)	1700-1 1/2 438 (500-1 1/2)	1700-1 1/2 438 (500-1 1/2)
CIRCLING	1760-1 492 (500-1)	1820-1 552 (600-1)	1820-1 1/2 552 (600-1 1/2)	1920-2 652 (700-2)	2080-3 812 (900-3)

REIL Rwy 32	HIRL Rwy 2-20 and 14-32	FAF to MAP 6.5 NM
Knots	60 90 120 150 180	Min:Sec 6:30 4:20 3:15 2:36 2:10

NC-3, 17 JUN 2021 to 15 JUL 2021

NC-3, 17 JUN 2021 to 15 JUL 2021