

WAAS CH <b>72933</b> <b>W32A</b>	APP CRS <b>319°</b>	Rwy Idg TDZE Apt Elev	<b>8000</b> <b>1268</b> <b>1268</b>
--	------------------------	-----------------------------	---

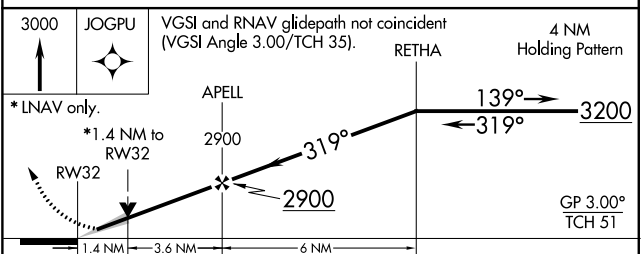
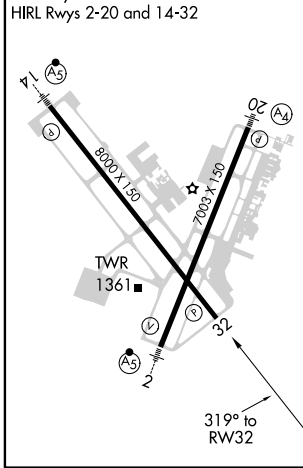
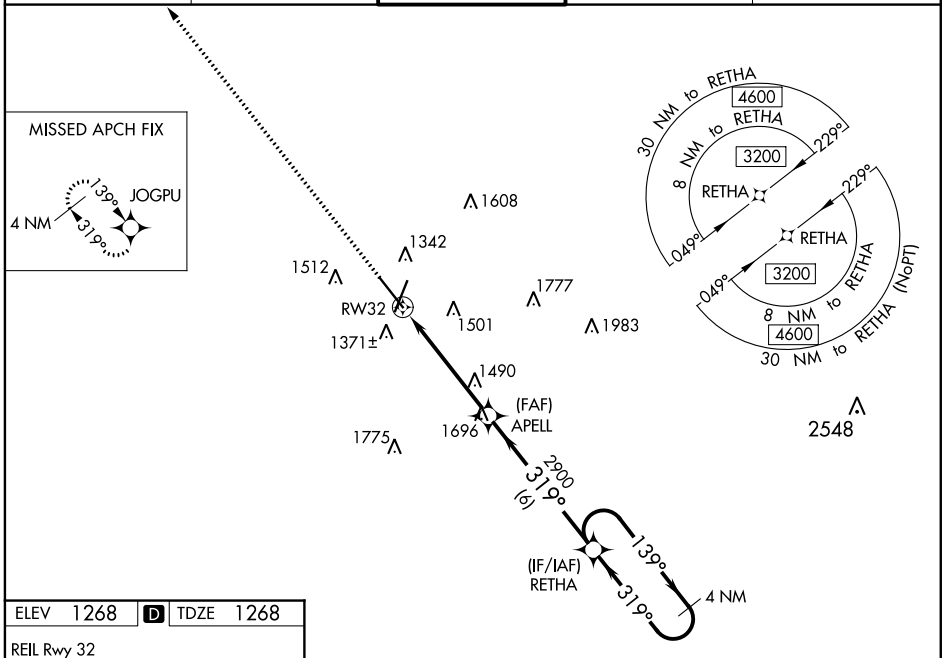
# RNAV (GPS) RWY 32

SPRINGFIELD-BRANSON NTL (SGF)

**⚠** Baro-VNAV and VDP NA when using Monett altimeter setting. For uncompensated Baro-VNAV systems, LNAV/VNAV NA below -16°C (4°F) or above 54°C (130°F). When local altimeter setting not received, use Monett altimeter setting and increase all DA 90 feet and all MDA 100 feet; increase LPV all Cats visibility 1/8 mile, LNAV/VNAV all Cats 3/8 mile, LNAV Cats C and D 1/4 mile and Circling Cat C 1/4 mile and Cat D 1/2 mile. DME/DME RNP- 0.3 NA.

**MISSED APPROACH:**  
Climb to 3000 direct JOGPU and hold.

ATIS <b>135.125</b>	SPRINGFIELD APP CON <b>121.1 290.5</b>	SPRINGFIELD TOWER <b>119.9 257.8</b>	GND CON <b>121.9 251.15</b>	CLNC DEL <b>123.675</b>
------------------------	---	---	--------------------------------	----------------------------



CATEGORY	A	B	C	D
LPV	DA	1518-1	250 (300-1)	
LNAV/VNAV	DA	1660-1 1/4	392 (400-1 1/4)	
LNAV	MDA	1740-1	472 (500-1)	1740-1 3/8, 472 (500-1 3/8)
<b>C</b> CIRCLING	1760-1	1820-1	1820-1 1/2	1920-2
	492 (500-1)	552 (600-1)	552 (600-1 1/2)	652 (700-2)

NC-3, 17 JUN 2021 to 15 JUL 2021

NC-3, 17 JUN 2021 to 15 JUL 2021