

WAAS CH 48903 W23A	APP CRS 226°	Rwy Idg TDZE 580 Apt Elev 583	6000
--	------------------------	---	-------------

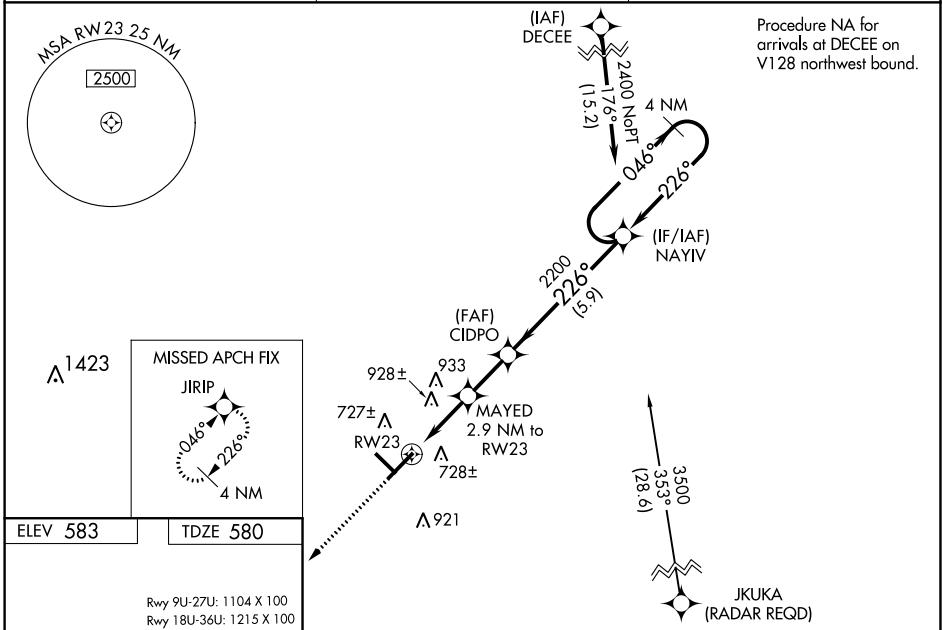
RNAV (GPS) RWY 23

FREEMAN MUNI (SER)

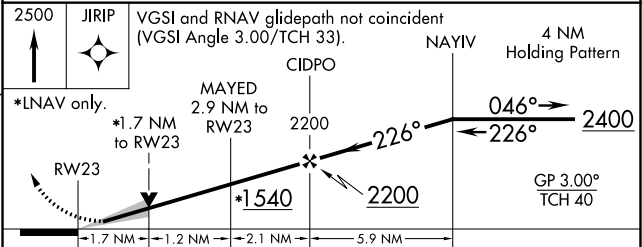
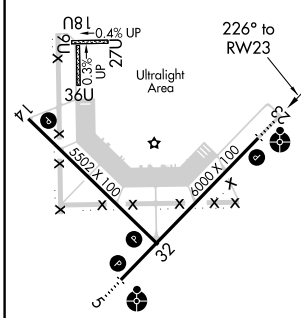
NA Baro-VNAV NA when using Louisville Muhammad Ali Intl altimeter setting. For uncompensated Baro-VNAV systems, LNAV/VNAV NA below -16°C (4°F) or above 54°C (130°F). When local altimeter setting not received, use Louisville Muhammad Ali Intl altimeter setting and increase all DA 117 feet and all MDA 120 feet; increase LPV all Cats, LNAV/VNAV all Cats and LNAV Cat C/D visibility 3/8 mile, and Circling Cat C/D visibility 1/2 mile. For inoperative ODALS, increase LNAV/VNAV all Cats visibility to 3/8, and LNAV Cat C/D visibility to 1/8. DME/DME RNP-0.3 NA. VDP NA with Louisville Muhammad Ali Intl altimeter setting. For inoperative ODALS when using Louisville Muhammad Ali Intl altimeter setting, increase LNAV/VNAV all Cats visibility to 1/8, and LNAV Cat C/D visibility to 2 1/2.

ODALS
 MISSED APPROACH:
 Climb to 2500 direct
 JIRIP and hold.

AWOS-3 119.425	INDIANAPOLIS CENTER 124.775 269.45	UNICOM 122.8 (CTAF)
--------------------------	--	-------------------------------



Procedure NA for arrivals at DECEE on V128 northwest bound.



CATEGORY	A	B	C	D
LPV DA		830-3/4	250 (300-3/4)	
LNAV/VNAV DA		858-3/4	278 (300-3/4)	
LNAV MDA	1160-3/4	580 (600-3/4)	1160-1 1/2	580 (600-1 1/2)
CIRCLING	1160-1	577 (600-1)	1300-2	1300-2 1/4
			717 (800-2)	717 (800-2 1/4)

MIRL Rwy 5-23 and 14-32
 REIL Rwy 5, 14, 23 and 32

EC-2, 17 JUN 2021 to 15 JUL 2021

EC-2, 17 JUN 2021 to 15 JUL 2021