

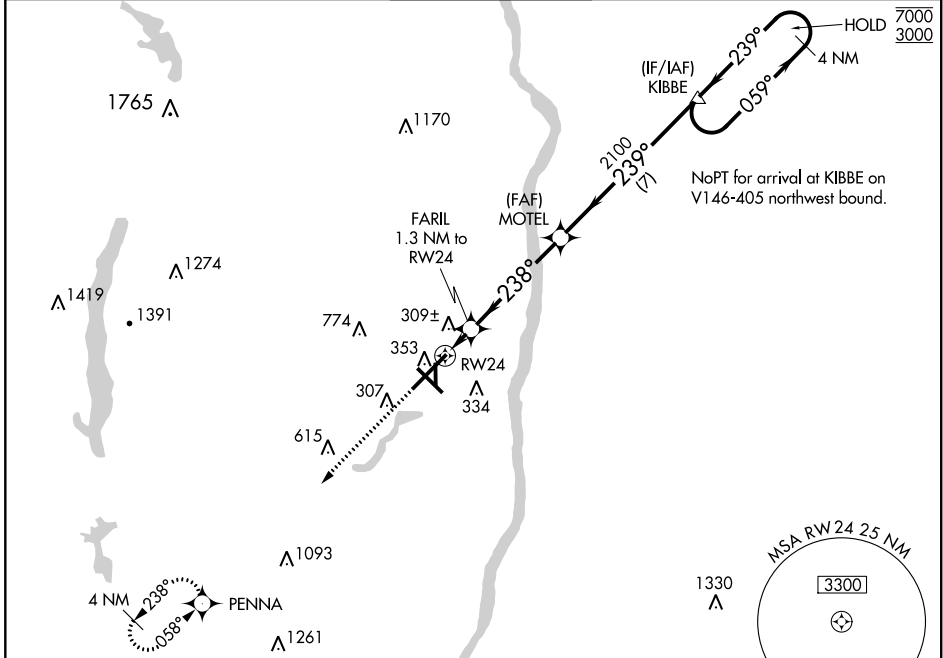
WAAS CH 97310 W24A	APP CRS 238°	Rwy Idg TDZE 170 Apt Elev 173	9509
--	------------------------	---	-------------

RNAV (GPS) Y RWY 24

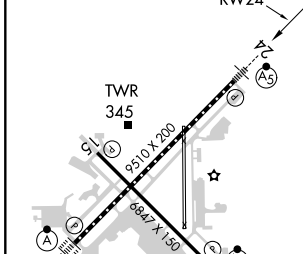
BRADLEY INTL (BDL)

RNP APCH. ⚠️	Circling Rwy 19 NA at night. For uncompensated Baro-VNAV systems, LNAV/VNAV NA below -18°C or above 54°C.	MALSR ⚠️	MISSED APPROACH: Climb to 3000 direct PENNA and hold.
-----------------	---	-------------	--

D-ATIS 118.15	YANKEE APP CON 123.95 290.55 281.5 (061°-240°) (241°-060°)	BRADLEY TOWER 120.3 351.8	GND CON 121.9 348.6	CLNC DEL 121.75 322.3	CPDLC
-------------------------	---	-------------------------------------	-------------------------------	---------------------------------	-------



ELEV 173	D	TDZE 170
-----------------	----------	-----------------



3000	PENNA	VGSI and RNAV glidepath not coincident (VGSI Angle 3.00°/TCH 71).	KIBBE	4 NM Holding Pattern
*LNAV only.	FARIL 1.3 NM to RWY 24	MOTEL 2100	239°	7000/3000
RWY 24	*640	2100	059°	GP 3.00° TCH 55
1.3	4.6 NM	7 NM		

CATEGORY	A	B	C	D
LPV DA		370/18	200 (200-½)	
LNAV/VNAV DA		560/45	390 (400-¾)	
LNAV MDA	560/24	390 (400-½)	560/35	390 (400-¾)
C CIRCLING	700-1	527 (600-1)	1120-2¾ 947 (1000-2¾)	1220-3 1047 (1100-3)

TDZ/CL Rwy 6 and 24
HIRL Rws 6-24 and 15-33
MIRL Rwy 1-19
REIL Rws 6 and 15

NE-1, 17 JUN 2021 to 15 JUL 2021

NE-1, 17 JUN 2021 to 15 JUL 2021