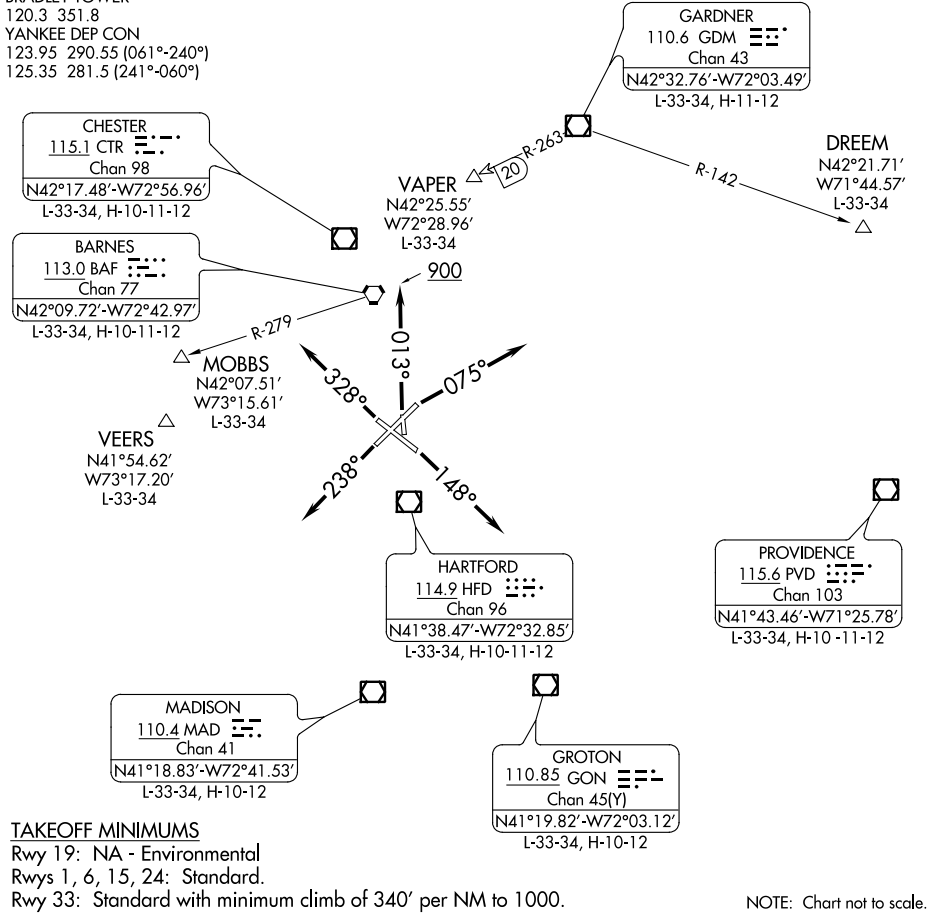


BRADLEY FIVE DEPARTURE

**TOP ALTITUDE:
4000**

D-ATIS 118.15
CLNC DEL
121.75 322.3
GND CON
121.9 348.6
CPDLC
BRADLEY TOWER
120.3 351.8
YANKEE DEP CON
123.95 290.55 (061°-240°)
125.35 281.5 (241°-060°)

NOTE: RADAR required.
NOTE: Initial departure headings are predicated on avoiding noise sensitive areas, flight crew awareness and compliance is important in minimizing noise impacts on surrounding communities.
NOTE: Appropriate departure frequency to be assigned by ATC.



NE-1, 17 JUN 2021 to 15 JUL 2021

NE-1, 17 JUN 2021 to 15 JUL 2021

DEPARTURE ROUTE DESCRIPTION

TAKEOFF RUNWAY 1: Climb heading 013° to 900, then as assigned, thence....
TAKEOFF RUNWAY 6: Climb heading 075° or as assigned, thence....
TAKEOFF RUNWAY 15: Climb heading 148° or as assigned, thence....
TAKEOFF RUNWAY 24: Climb heading 238° or as assigned, thence....
TAKEOFF RUNWAY 33: Climb heading 328° or as assigned, thence....

....on RADAR vectors to filed/assigned route or depicted fix. Maintain 4000 or assigned altitude, expect clearance to requested altitude/flight level 10 minutes after departure.

BRADLEY FIVE DEPARTURE