

| | | | |
|----------------|-------------|----------|-------------|
| LOC/DME I-SMX | APP CRS | Rwy Idg | 8004 |
| 108.9 | 120° | TDZE | 230 |
| Chan 26 | | Apt Elev | 261 |

ILS or LOC RWY 12

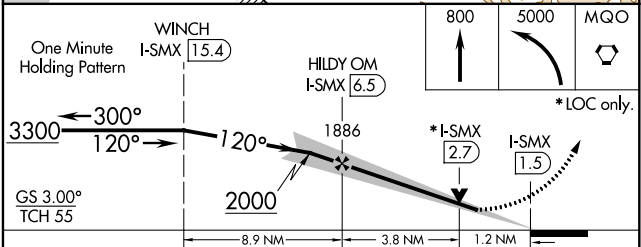
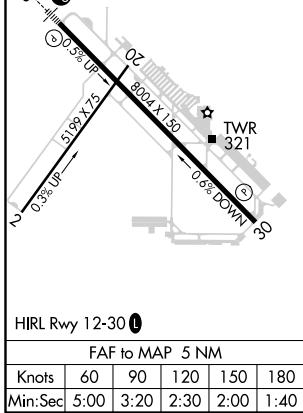
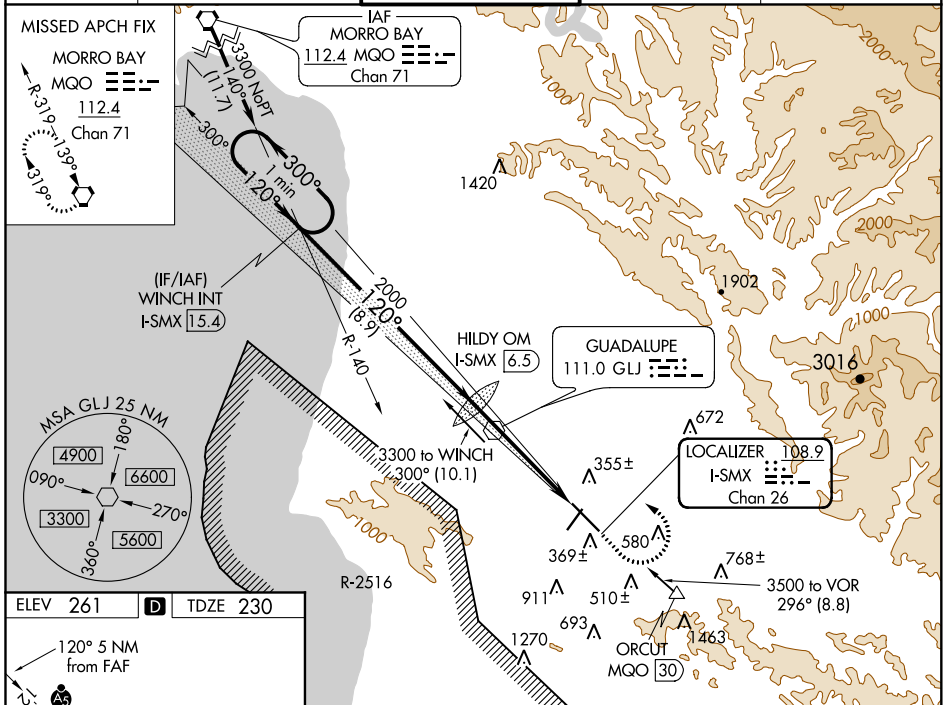
SANTA MARIA PUB/CAPT G ALLAN HANCOCK FLD (SMX)

⚠ Night Landing: Rwy 2 NA. VDP NA with Vandenberg altimeter setting.
⚠ When local altimeter setting not received, use Vandenberg altimeter setting and increase all DA 43 feet, and all MDA 60 feet, increase S-LOC 12 Cat C/D visibility to RVR 5500 and Circling Cat C visibility to 1¾. For inop MALSRS, increase S-LOC 12 Cat C/D visibility to 1¾ mile.
 # RVR 1800 authorized with the use of FD or AP or HUD to DA.



MISSED APPROACH: Climb to 800, then climbing left turn to 5000 direct MQO VORTAC and hold.

| | | | | |
|---------------|------------------------|------------------------------|--------------|---------------|
| ATIS | SANTA BARBARA APP CON* | SANTA MARIA TOWER* | GND CON | UNICOM |
| 121.15 | 124.15 327.8 | 118.3 (CTAF) 0 239.25 | 121.9 | 122.95 |



| | | | | |
|-----------|--------------------|---|---|---|
| CATEGORY | A | B | C | D |
| S-ILS 12# | 430/24 200 (200-½) | | | |
| S-LOC 12 | 680/24 450 (500-½) | | 680/50 450 (500-1) | |
| CIRCLING | 860-1 599 (600-1) | | 860-1½ 1320-3 599 (600-1½) 1059 (1100-3) | |

ILS or LOC RWY 12

SW-3, 17 JUN 2021 to 15 JUL 2021

SW-3, 17 JUN 2021 to 15 JUL 2021