

PALMZ ONE ARRIVAL

MIAMI, FLORIDA

SE-3, 17 JUN 2021 to 15 JUL 2021

ARRIVAL ROUTE DESCRIPTION

ST PETESBURG TRANSITION (PIE.PALMZ1): From over PIE VORTAC on PIE R-173 and SRQ R-353 to SRQ VOR/DME then on SRQ R-152 to PALMZ. Thence.

LEE COUNTY TRANSITION (RWS.PALMZ1): From over RSW VORTAC on RSW R-160 to PALMZ. Thence.

SARASOTA TRANSITION (SRQ.PALMZ1): From over SRQ VOR/DME on SRQ R-152 PALMZ. Thence.

.Landing all airports: from PALMZ on DOLPHIN VORTAC (DHP) R-281 to PRIVY, thence as depicted to DHP VORTAC.
Expect RADAR vectors to final approach course.

ST. PETERSBURG 116.4 PIE
Chan 111
N27°54.47'-W82°41.06'
L-21-24, H-8

LEE COUNTY 111.8 RSW
Chan 55
N26°31.79'-W81°46.55'
L-21-23, H-8

SARASOTA 117.0 SRQ
Chan 117
N27°24.42'-W82°33.82'
L-21, L-23, H-8

PALMZ N25°55.42'-W081°30.56'
T0000

WILOS N26°06.59'-W081°38.39'

PRIVY N25°53.33'-W081°10.33'

MIAMI- OPA LOCKA EXEC

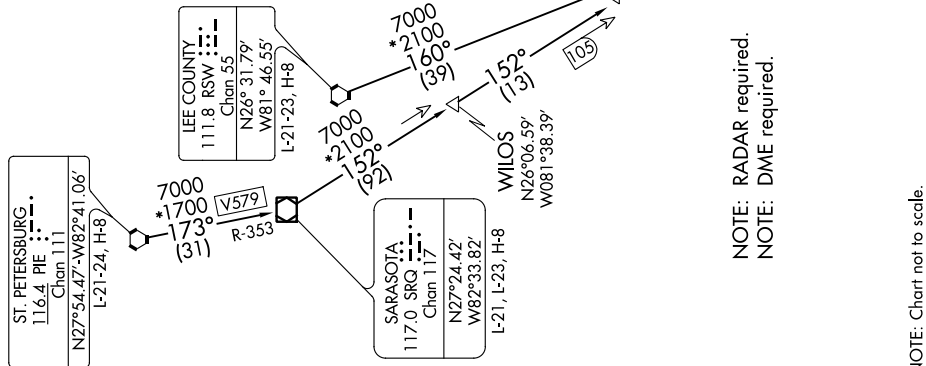
MIAMI EXEC

DOLPHIN 113.9 DHP
Chan 86
N24°48.00'-W80°20.94'
Ldg all airports

HOMESTEAD ARB

MIAMI GENERAL AVIATION

OCEAN REEF CLUB (Private)



NOTE: RADAR required.
NOTE: DME required.

NOTE: Chart not to scale.

PALMZ ONE ARRIVAL

(PALMZ.PALMZ1) 22APR21

MIAMI, FLORIDA

SE-3, 17 JUN 2021 to 15 JUL 2021