

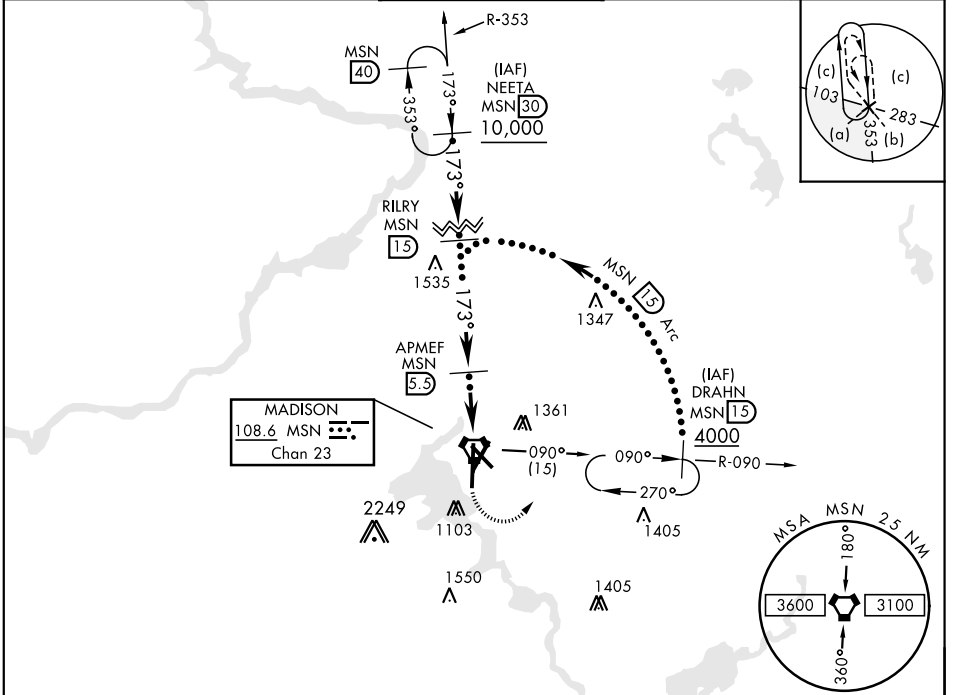
MADISON, WISCONSIN

HI-TACAN RWY 18

VORTAC MSN 108.6 Chan 23	APCH CRS 173°	Rwy ldg TDZE 8606 Arprt Elev 887	JAL-245 [USAF] MADISON/ DANE COUNTY REGIONAL-TRUAX FIELD (KMSN)
--	-------------------------	--	--

MALS A5	MISSED APPROACH: Climbing left turn to 4000 on MSN VORTAC R-090 to DRAHN 15 DME and hold.
-------------------	---

ATIS 124.65 278.3	MADISON APP CON EAST 120.1 350.3 WEST 135.45 343.7	MADISON TOWER ★ 119.3 0 (CTAF) 257.8	GND CON 121.9 348.6	ASR
-----------------------------	--	---	-------------------------------	-----

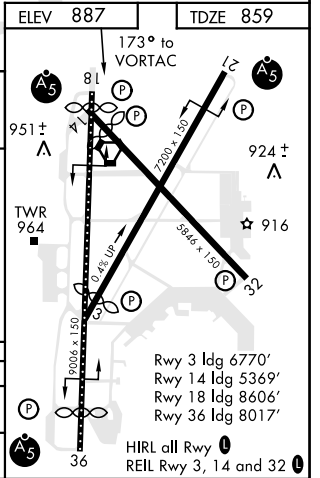
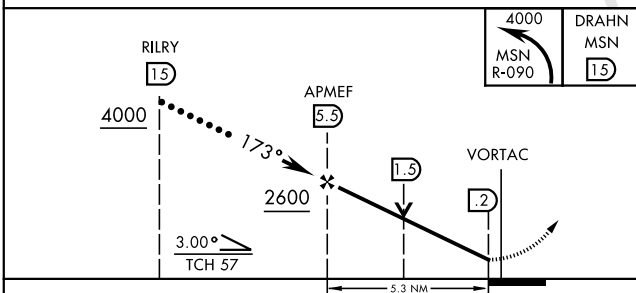


EC-3, 17 JUN 2021 to 15 JUL 2021

EC-3, 17 JUN 2021 to 15 JUL 2021

RADAR REQUIRED

EMERG SAFE ALT 100 NM 3600



MADISON, WISCONSIN	43°08'N-89°20'W	MADISON/ DANE COUNTY REGIONAL-TRUAX FIELD (KMSN)
Amdt 1B 28FEB19		

HI-TACAN RWY 18