

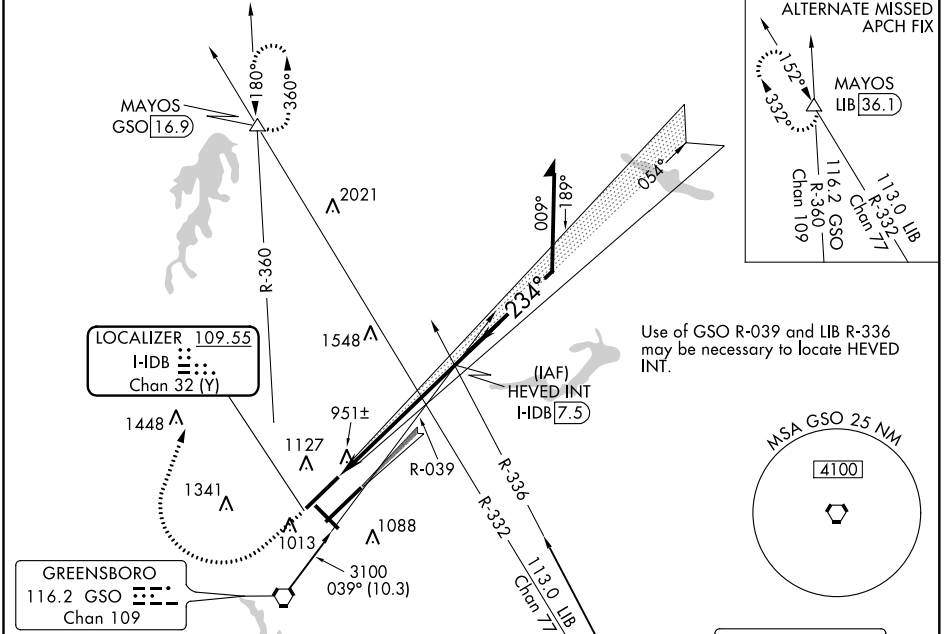
LOC/DME I-DB	APP CRS	Rwy Idg TDZE	9000
<b>109.55</b>	<b>234°</b>	855	
Chan 32 (Y)		Apt Elev	926

# ILS or LOC RWY 23R

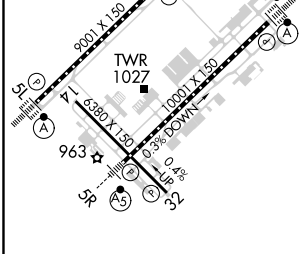
PIEDMONT TRIAD INTL (GSO)

<p>Simultaneous approach authorized with Rwy 23L.</p>	<p>MALS R</p>	<p>MISSED APPROACH: Climb to 1500 then climbing right turn to 3100 on heading 015° and GSO VORTAC R-360 to MAYOS INT/GSO 16.9 DME and hold.</p>	
		<p>GREENSBORO APP CON (250°-049°) (050°-249°)</p> <p>GREENSBORO TOWER <b>119.1 290.325</b></p> <p>GND CON <b>121.9 348.6</b></p> <p>CLNC DEL <b>121.75</b></p>	

D-ATIS <b>128.55</b>	GREENSBORO APP CON (250°-049°) (050°-249°)	GREENSBORO TOWER <b>119.1 290.325</b>	GND CON <b>121.9 348.6</b>	CLNC DEL <b>121.75</b>
----------------------	--	---------------------------------------	----------------------------	------------------------



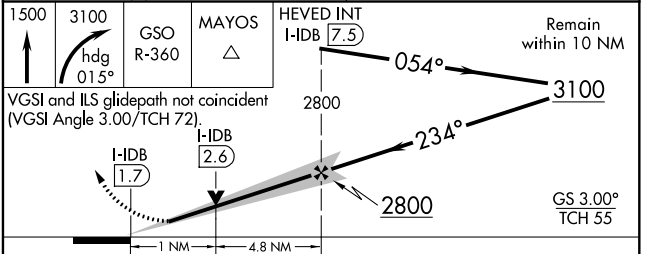
ELEV 926	D	TDZE 855
234° 5.8 NM from FAF		



TDZ/CL Rwy 5L, 23R and 23L  
REL Rwy 32  
HIRL Rwy 14-32, 5R-23L and 5L-23R

FAF to MAP 5.8 NM

Knots	60	90	120	150	180
Min:Sec	5:48	3:52	2:54	2:19	1:56



CATEGORY	A	B	C	D
S-ILS 23R		1055/18	200 (200-1/2)	
S-LOC 23R		1240/24	385 (400-1/2)	1240/40 385 (400-3/4)
CIRCLING	1440-1	514 (600-1)	1700-2 1/4 774 (800-2 1/4)	1700-2 1/2 774 (800-2 1/2)

SE-2, 17 JUN 2021 to 15 JUL 2021

SE-2, 17 JUN 2021 to 15 JUL 2021