

WAAS CH 65710 W35A	APP CRS 352°	Rwy Idg 7851 TDZE 1883 Apt Elev 1887
--	------------------------	---

RNAV (GPS) RWY 35

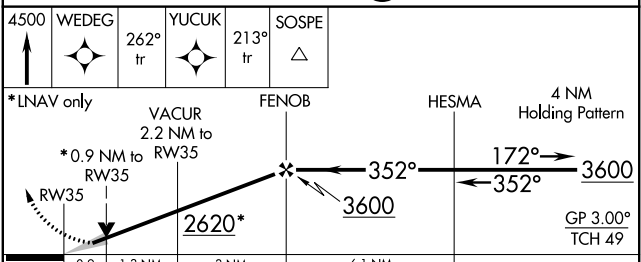
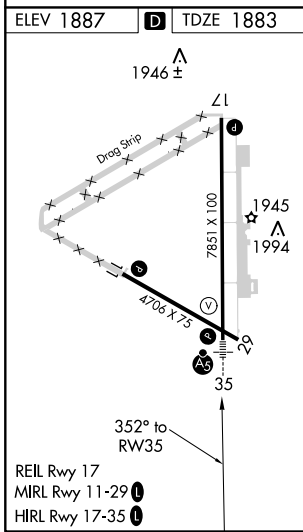
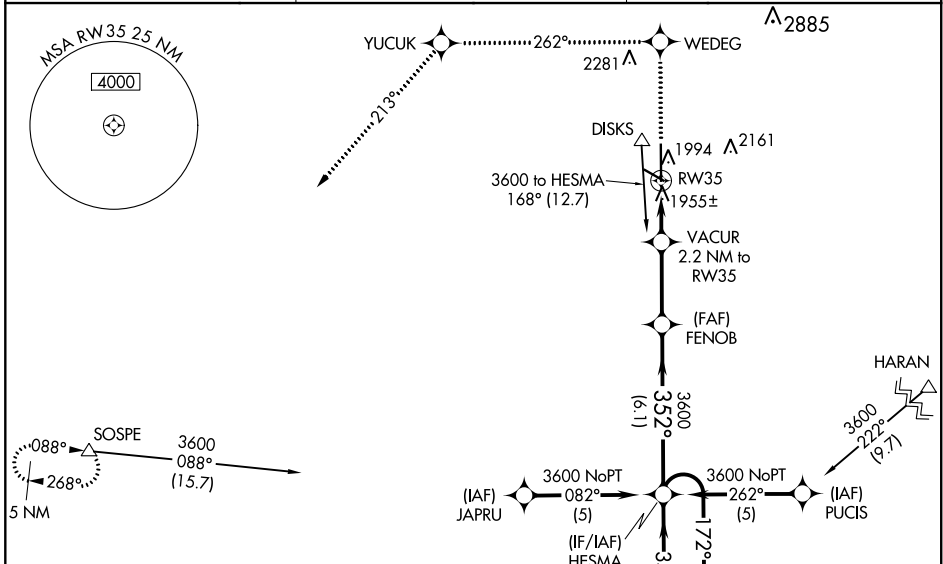
GREAT BEND MUNI (G.B.D)

⚠ For uncompensated Baro-VNAV systems, LNAV/VNAV NA below -18°C (0°F) or above 54°C (130°F). DME/DME RNP-0.3 NA. When local altimeter setting not received, use Russell Muni altimeter setting and increase all DA 77 feet and all MDA 80 feet. Increase LPV and LNAV/VNAV all Cats, LNAV Cat C and Circling Cat D visibility ¼ mile. For inoperative MALSRS increase LPV all Cats visibility to 1 mile. For inoperative MALSRS when using Russell Muni altimeter setting increase LPV all Cats and LNAV Cat D visibility to 1¼ mile. Baro-VNAV and VDP NA when using Russell Muni altimeter setting. Inoperative table does not apply to LNAV Cat D.

MALSRS
AS

MISSED APPROACH: Climb to 4500 direct WEDEG and via 262° track to YUCUK then via 213° track to SOSPE and hold.

AWOS-3PT 119.275	KANSAS CITY CENTER 118.8 322.425	UNICOM 122.8 (CTAF)
----------------------------	--	-------------------------------



CATEGORY	A	B	C	D
LPV DA		2171-½	288 (300-½)	
LNAV/VNAV DA		2222-¾	339 (400-¾)	
LNAV MDA		2220-½	337 (400-½)	2220-1 337 (400-1)
CIRCLING	2300-1 413 (500-1)	2340-1 453 (500-1)	2340-1½ 453 (500-1½)	2500-2 613 (700-2)

NC-2, 17 JUN 2021 to 15 JUL 2021

NC-2, 17 JUN 2021 to 15 JUL 2021