

# RNAV (GPS) RWY 4

APCH CRS **044°** Rwy ldg **4503**  
 TDZE **1066**  
 Arprt Elev **1066**

AL-155 [USA]

MARSHALL AAF (KFRI)

**▼** \* Circling not authorized NW of Rwy 4-22.

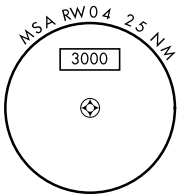
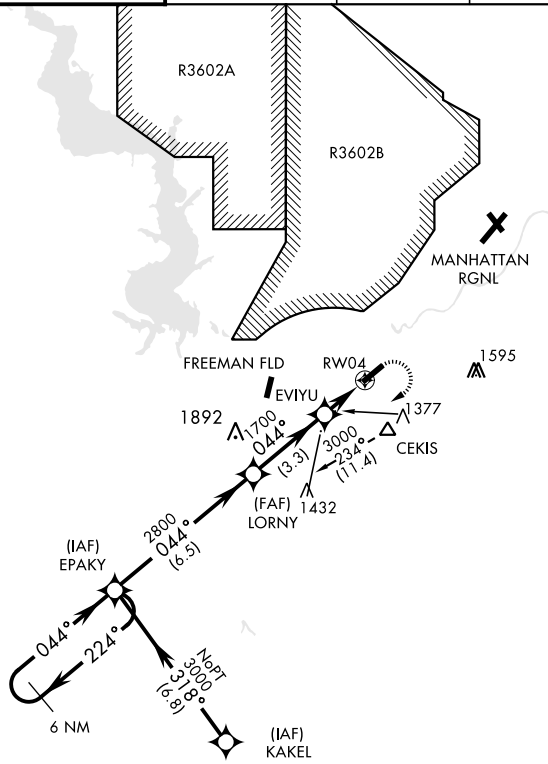


MISSED APPROACH: Climbing right turn to 3000 direct EPAKY and hold.

**▲** NA Visibility reduction by helicopters NA

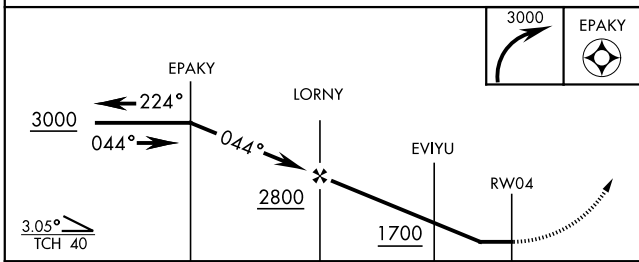
ATIS ★ <b>121.025</b>	MARSHALL GCA <b>121.25 254.35</b>	MARSHALL TOWER ★ <b>126.2 (CTAF) 0 248.65</b>	GND CON <b>140.20 229.4</b>	CLNC DEL <b>119.65</b>	ASR/PAR
--------------------------	--------------------------------------	--	--------------------------------	---------------------------	---------

DME/DME RNP -0.3 NA  
 Procedure NA for arrival at CEKIS via V4-508 eastbound.



NC-2, 17 JUN 2021 to 15 JUL 2021

NC-2, 17 JUN 2021 to 15 JUL 2021



ELEV 1066	TDZE 1066
044° from LORNY HIRL Rwy 4-22	
1354	

CATEGORY	A	B	C	D
LNAY MDA	1640-1 574 (600-1)	1640-1½ 574 (600-1½)	1640-1¾ 574 (600-1¾)	1640-2¼ 574 (600-2¼)
CIRCLING *	1660-1 594 (600-1)	1680-1 614 (700-1)	1680-1¾ 614 (700-1¾)	1760-2¼ 694 (700-2¼)

# RNAV (GPS) RWY 4