

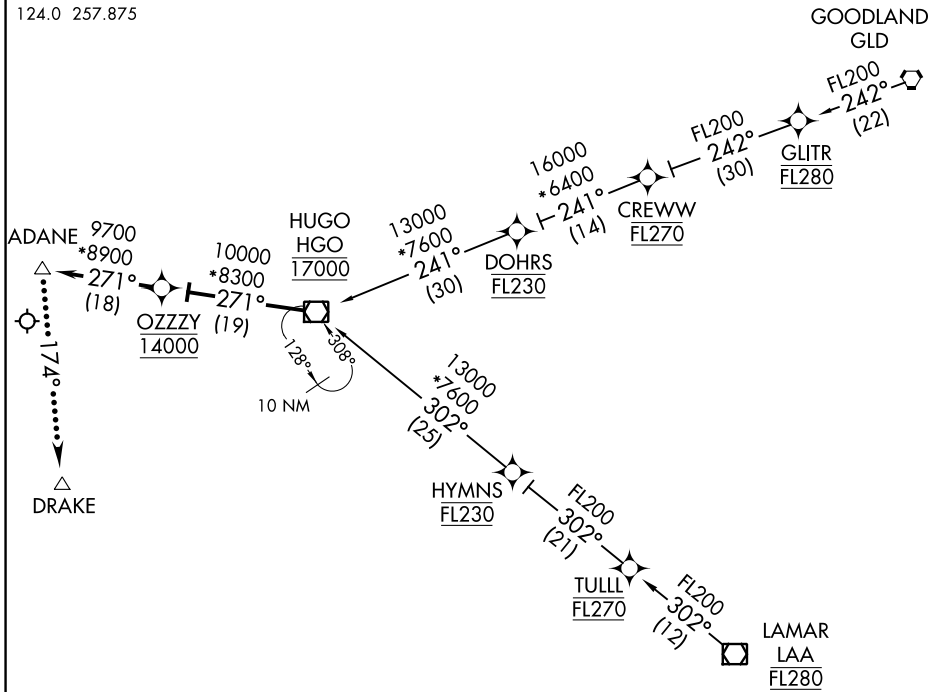
(HGO.OZZZY4) 17229

OZZZY FOUR ARRIVAL (RNAV)

AL-87 (FAA)

CITY OF COLORADO SPRINGS MUNI (COS)
COLORADO SPRINGS, COLORADO

ATIS
125.0 254.3
SPRINGS APP CON
124.0 257.875



- NOTE: RADAR required.
- NOTE: RNAV 1
- NOTE: GPS required.
- NOTE: Turbojet aircraft only.
- NOTE: Landing all other runways expect RADAR vectors prior to ADANE.

NOTE: Chart not to scale.

ARRIVAL ROUTE DESCRIPTION

GOODLAND TRANSITION (GLD.OZZZY4)

LAMAR TRANSITION (LAA.OZZZY4)

From over HGO VOR/DME on track 271° to cross OZZZY at 14000, then on track 271° to ADANE. Expect ILS RWY 17L or RWY 17R Visual Approach as assigned by ATC.

LOST COMMUNICATIONS

Landing South: At ADANE join and execute ILS RWY 17L approach.

Landing North: At ADANE fly on 174° track to DRAKE.

At DRAKE join and execute ILS RWY 35L approach.

OZZZY FOUR ARRIVAL (RNAV)

(HGO.OZZZY4) 17AUG17

COLORADO SPRINGS, COLORADO
CITY OF COLORADO SPRINGS MUNI (COS)

SW-1, 17 JUN 2021 to 15 JUL 2021

SW-1, 17 JUN 2021 to 15 JUL 2021