

# NDB RWY 35L

CITY OF COLORADO SPRINGS MUNI (COS)

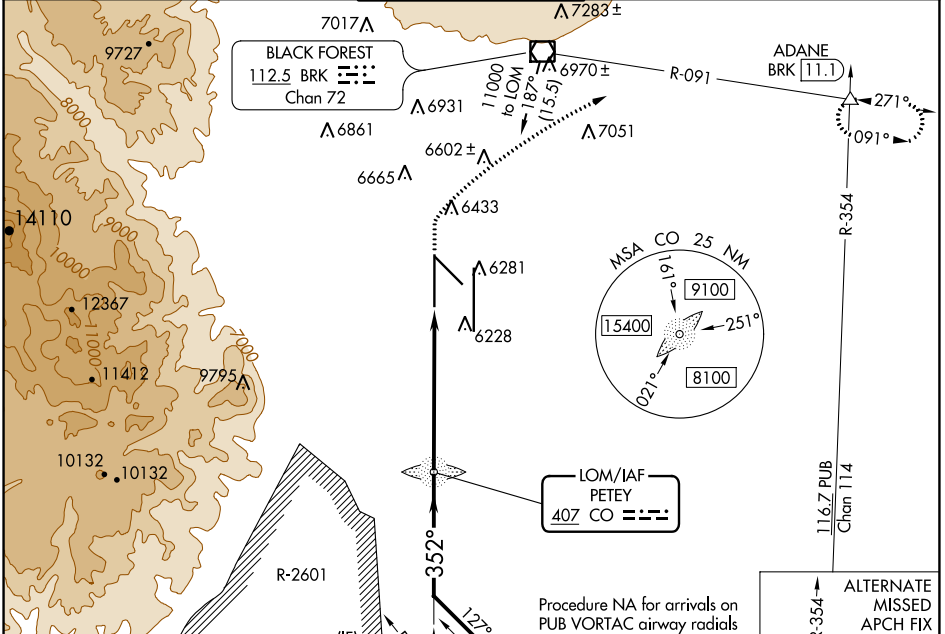
LOM CO <b>407</b>	APP CRS <b>352°</b>	Rwy Idg TDZE Apt Elev	<b>11022</b> <b>6075</b> <b>6187</b>
----------------------	------------------------	-----------------------------	--

**▼** RADAR monitoring required when R-2601 in use.  
**▲** For inop MALS, increase S-35L Cats C and D visibility to 1 3/8 mile.



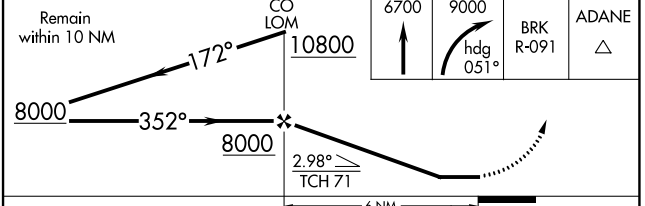
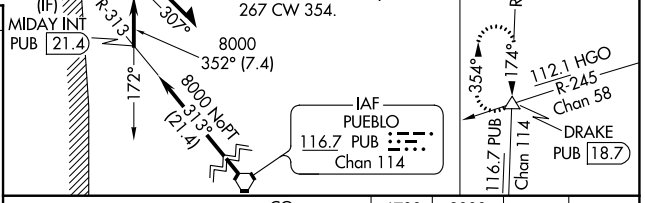
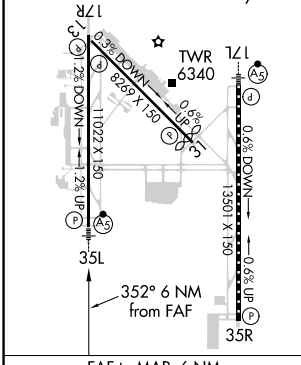
**MISSED APPROACH:** Climb to 6700 then climbing right turn to 9000 on heading 051° and on BRK VOR/DME R-091 to ADANE INT/BRK 11.1 DME and hold.

ATIS <b>125.0 254.3</b>	SPRINGS APP CON <b>124.0 257.875</b>	SPRINGS TOWER <b>119.9 360.6</b>	GND CON <b>121.7 348.6</b>	CLNC DEL <b>134.45 363.125</b>
----------------------------	---	-------------------------------------	-------------------------------	-----------------------------------



ELEV 6187 **D** TDZE 6075

HIRL Rwy 17R-35L and 17L-35R  
 REIL Rwy 13, 17R, 31 and 35R  
 TDZ/CL Rwy 17L and 35R  
 MIRL Rwy 13-31



CATEGORY	A	B	C	D
S-35L	6540/40	465 (400-3/4)	6540/50	465 (400-1)
<b>C</b> CIRCLING	6740-1 553 (600-1)	6800-1 613 (700-1)	7040-2 1/2 853 (900-2 1/2)	7260-3 1073 (1100-3)

SW-1, 17 JUN 2021 to 15 JUL 2021

SW-1, 17 JUN 2021 to 15 JUL 2021