

LOC/DME I-AHI <b>109.1</b> Chan 28	APP CRS <b>352°</b>	Rwy Idg <b>13501</b> TDZE <b>6118</b> Apt Elev <b>6187</b>
--	------------------------	--

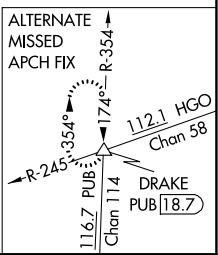
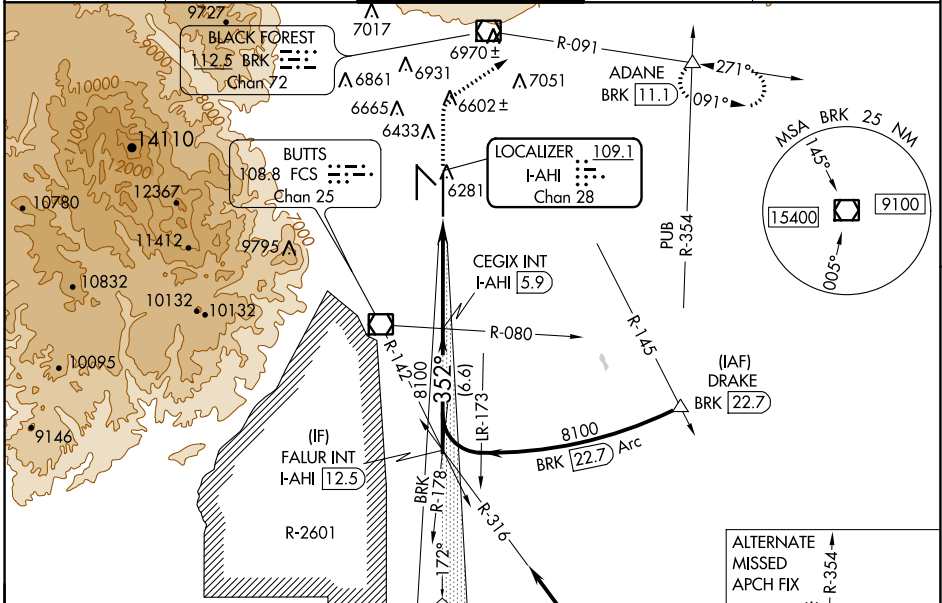
# ILS or LOC RWY 35R

CITY OF COLORADO SPRINGS MUNI (COS)

**⚠** **⚠** RADAR required when R-2601 in use.

MISSED APPROACH: Climb to 6700 then climbing right turn to 9000 on heading 047° and on BRK VOR/DME R-091 to ADANE INT/BRK 11.1 DME and hold.

ATIS <b>125.0 254.3</b>	SPRINGS APP CON <b>124.0 257.875</b>	SPRINGS TOWER <b>119.9 360.6</b>	GND CON <b>121.7 348.6</b>	CLNC DEL <b>134.45 363.125</b>
----------------------------	---	-------------------------------------	-------------------------------	-----------------------------------

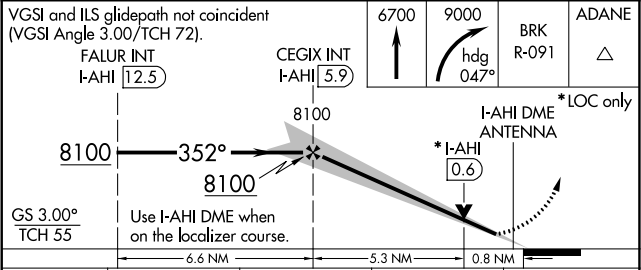


ELEV 6187 **D** TDZE 6118

MIRL Rwy 13-31  
HIRL Rws 17R-35L and 17L-35R  
REIL Rws 13, 17R, 31 and 35R  
TDZ/CL Rws 17L and 35R

Procedure NA for arrival on PUB VORTAC airway radials 267 CW 354.

IAF PUEBLO 116.7 PUB (Chan 114)



VGSI and ILS glidepath not coincident (VGSI Angle 3.00/TCH 72).	6700	9000	ADANE
FALUR INT I-AHI 12.5	CEGIX INT I-AHI 5.9	BRK R-091	△
GS 3.00° TCH 55	8100	I-AHI DME ANTENNA	*LOC only
	6.6 NM	5.3 NM	0.8 NM
CATEGORY	A	B	C
S-ILS 35R	6318/40 200 (200-¾)		
S-LOC 35R	6420/55 302 (300-1)	6420/45 302 (300-¾)	
<b>CIRCLING</b>	6740-1 553 (600-1)	6800-1 613 (700-1)	7040-2½ 853 (900-2½)
	7260-3 1073 (1100-3)		

SW-1, 17 JUN 2021 to 15 JUL 2021

SW-1, 17 JUN 2021 to 15 JUL 2021