

WAAS CH <b>72817</b> W13A	APP CRS <b>133°</b>	Rwy Idg <b>6407</b> TDZE <b>67</b> Apt Elev <b>70</b>
---------------------------------	------------------------	---

# RNAV (GPS) RWY 13

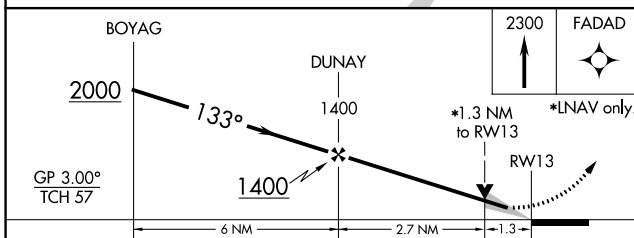
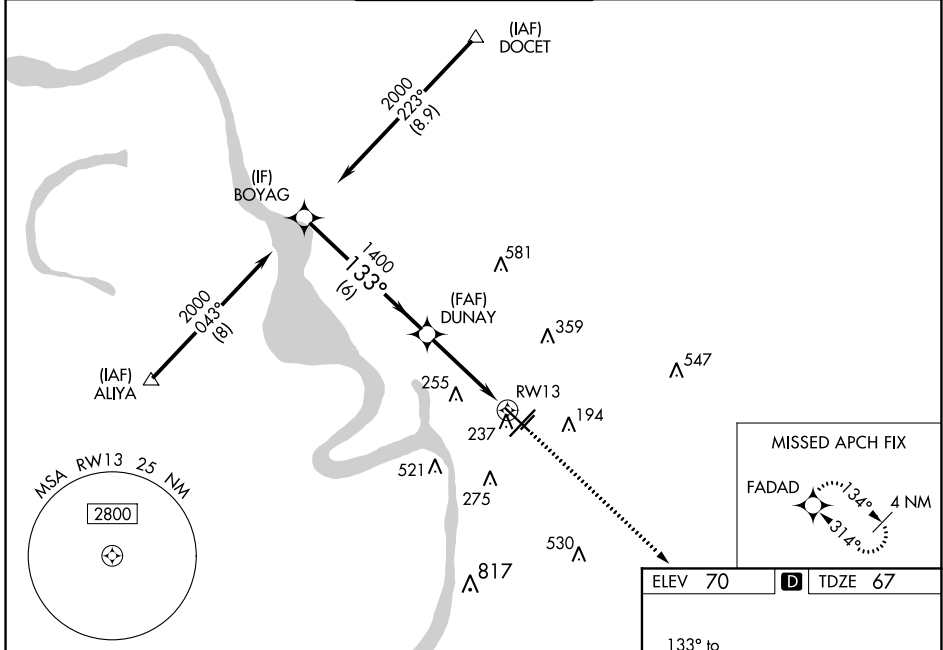
BATON ROUGE METRO, RYAN FLD (BTR)

**⚠** For uncompensated Baro-VNAV systems, LNAV/VNAV NA below -5°C (23°F) or above 54°C (130°F). DME/DME RNP-0.3 NA. When local altimeter setting not received, use Hammond altimeter setting and increase all DA 91 feet and all MDA 100 feet, and increase LNAV/VNAV all Cats visibility ¼ mile, and LNAV Cats C and D visibility ⅓ mile. For inop MALSRL when using Hammond altimeter setting, increase LPV all Cats visibility to ⅓ mile, LNAV Cat C and D visibility to 1⅓ mile. Baro-VNAV and VDP NA when using Hammond altimeter setting.

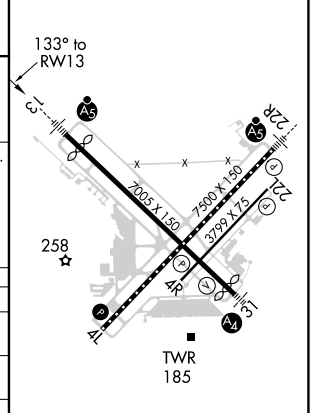
**MALSRL**  
ASR

**MISSED APPROACH:** Climb to 2300 direct FADAD and hold.

ATIS <b>125.2</b>	BATON ROUGE APP CON ★ <b>120.3 278.3</b>	RYAN TOWER ★ <b>118.45 (CTAF) 257.8</b>	GND CON <b>121.9</b>	CLNC DEL <b>119.4</b>	UNICOM <b>122.95</b>
----------------------	---	--	-------------------------	--------------------------	-------------------------



ELEV 70	TDZE 67
---------	---------



CATEGORY	A	B	C	D
LPV DA		267-1/2	200 (200-1/2)	
LNAV/VNAV DA		465-7/8	398 (400-7/8)	
LNAV MDA	540-1/2	473 (500-1/2)	540-1	473 (500-1)
CIRCLING	560-1 490 (500-1)	660-1 590 (600-1)	780-2 710 (800-2)	840-2 1/2 770 (800-2 1/2)

TDZ/CL Rwy 22R  
HIRL Rwy 13-31 and 4L-22R  
MIRL Rwy 4R-22L

SC-4, 17 JUN 2021 to 15 JUL 2021

SC-4, 17 JUN 2021 to 15 JUL 2021