

LOC/DME I-CLZ 108.7 Chan 24	APP CRS 223°	Rwy Idg 7500 TDZE 70 Apt Elev 70
---	------------------------	---

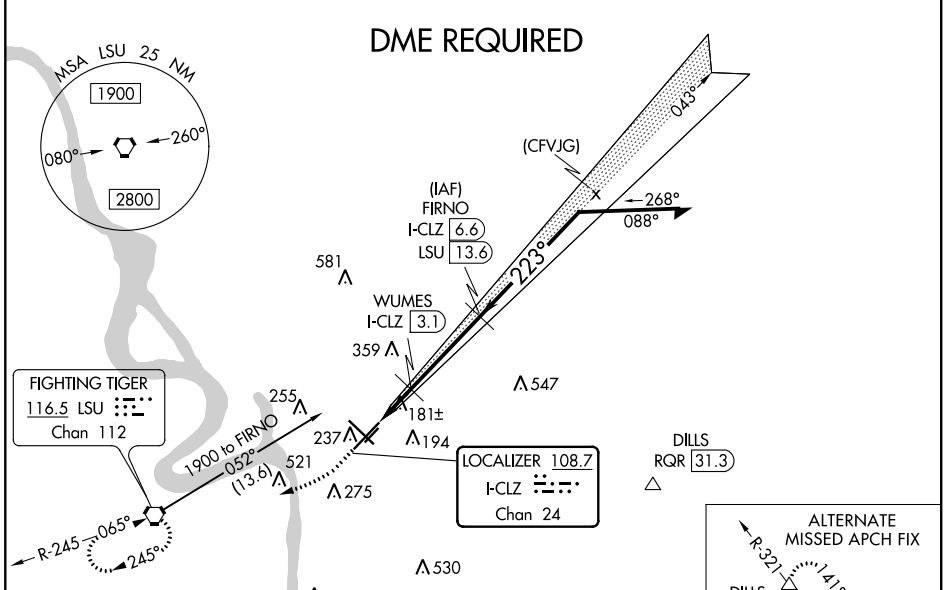
ILS or LOC/DME RWY 22R

BATON ROUGE METRO, RYAN FLD (BTR)

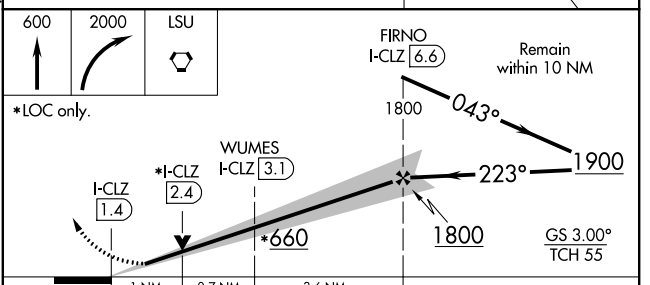
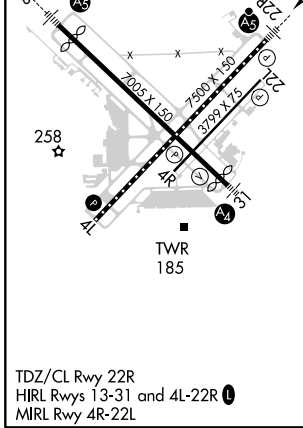
ASR When local altimeter setting not received, use Hammond altimeter setting and increase all DA 91 feet and all MDA 100 feet; increase S-ILS 22R all Cats visibility to RVR 2200; increase S-LOC 22R Cat C/D visibility to RVR 5000. For inop MALSAR when using Hammond altimeter setting, increase S-ILS 22R all Cats visibility to RVR 4500, and S-LOC 22R Cat C/D visibility to 1 1/8 mile. For inop MALSAR, increase S-LOC 22R Cat C/D visibility to RVR 5500. VDP NA with Hammond altimeter setting.

MALSAR
MISSED APPROACH: Climb to 600 then climbing right turn to 2000 direct LSU VORTAC and hold.

ATIS 125.2	BATON ROUGE APP CON * 120.3 278.3	RYAN TOWER * 118.45 (CTAF) 257.8	GND CON 121.9	CLNC DEL 119.4	UNICOM 122.95
----------------------	---	--	-------------------------	--------------------------	-------------------------



ELEV 70	D	TDZE 70
---------	----------	---------



CATEGORY	A	B	C	D
S-ILS 22R	270/18 200 (200-1/2)			
S-LOC 22R	440/24	370 (400-1/2)	440/35	370 (400-3/4)
C CIRCLING	560-1 490 (500-1)	660-1 590 (600-1)	780-2 710 (800-2)	840-2 1/2 770 (800-2 1/2)

SC-4, 17 JUN 2021 to 15 JUL 2021

SC-4, 17 JUN 2021 to 15 JUL 2021