

APP CRS	Rwy Idg	3095
321°	TDZE	284
	Apt Elev	284

RNAV (GPS) RWY 32

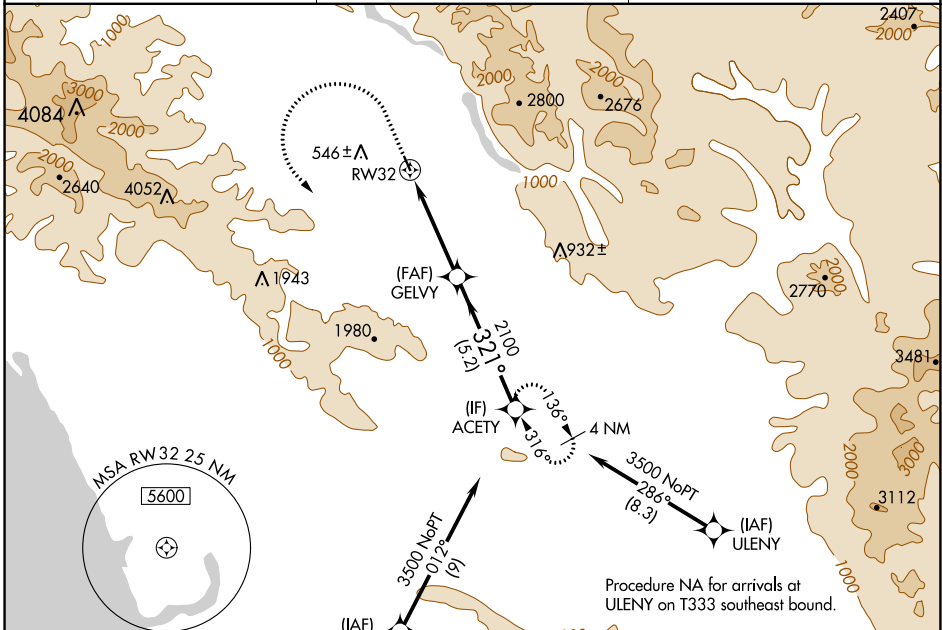
SAN MARTIN (E16)

RNP APCH.

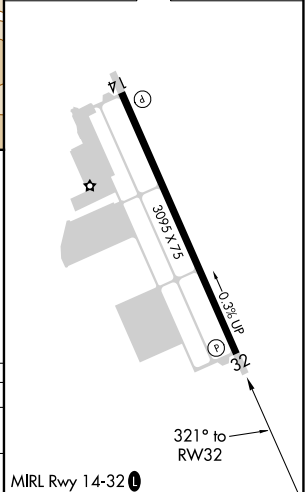
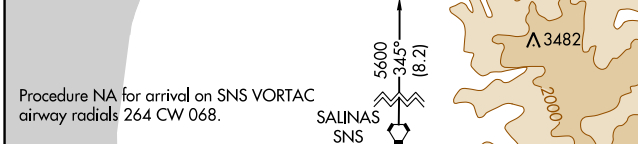
⚠ Circling NA southwest of Rwy 14-32. Rwy 32 helicopter visibility reduction below ¾ SM NA.

MISSED APPROACH: Climb to 1700 then climbing left turn to 3500 direct ACETY and hold.

AWOS-3P 118.35	NORCAL APP CON 124.525 348.675	UNICOM 122.7 (CTAF) 0
--------------------------	--	---------------------------------



ELEV 284	TDZE 284
----------	----------



CATEGORY	A	B	C	D
LNVA MDA	1060-1 776 (800-1)	1060-1¼ 776 (800-1¼)	NA	
C CIRCLING	1060-1 776 (800-1)	1160-1¼ 876 (900-1¼)	NA	

MIRL Rwy 14-32 0

SW-2, 20 MAY 2021 to 17 JUN 2021

SW-2, 20 MAY 2021 to 17 JUN 2021