

APP CRS <b>297°</b>	Rwy Idg <b>2621</b>
	TDZE <b>5</b>
	Apt Elev <b>5</b>

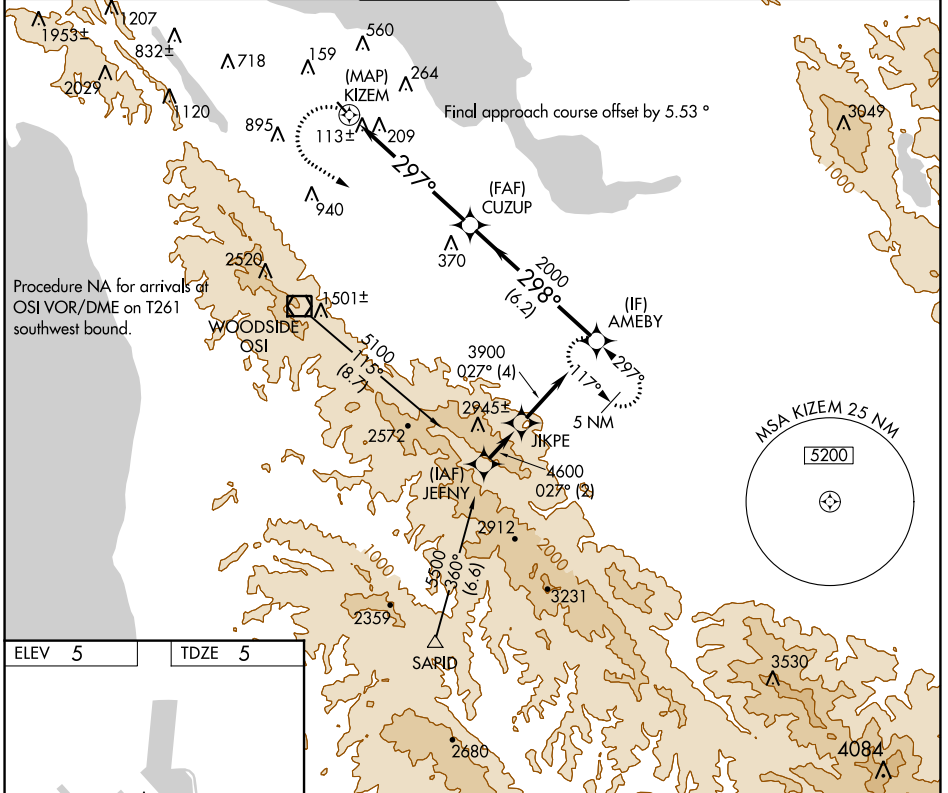
# RNAV (GPS) Y RWY 30

SAN CARLOS (SQL)

**▼** DME/DME RNP-0.3 NA. When local altimeter setting not received, use San Francisco Intl altimeter setting and increase all MDA 40 feet.  
**▲** Rwy 30 visibility reduction by helicopters below 1 SM NA.  
 Circling NA west of Rwy 12-30.

**MISSED APPROACH:** Climbing left turn to 5400 direct AMEBY and hold, continue climb-in-hold to 5400.

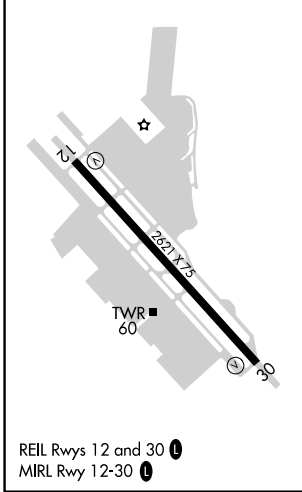
ATIS <b>125.9</b>	NORCAL APP CON <b>133.95 317.6</b>	SAN CARLOS TOWER ★ <b>119.0 (CTAF) 326.2</b>	GND CON <b>121.6</b>	UNICOM <b>122.95</b>
----------------------	---------------------------------------	---	-------------------------	-------------------------



SW-2, 20 MAY 2021 to 17 JUN 2021

SW-2, 20 MAY 2021 to 17 JUN 2021

ELEV 5	TDZE 5
--------	--------



REIL Rws 12 and 30 **①**  
 MIRL Rwy 12-30 **②**

5400	AMEBY	VGSI and descent angles not coincident (VGSI Angle 3.00/TCH 25).	AMEBY
		CUZUP	3900
	KIZEM	2000	
$\leq 3.05^\circ$ TCH 40			
0.1		5.9 NM	6.2 NM
CATEGORY	A	B	C D
LNAV MDA	1260-1 ¼	1255 (1300-1 ¼)	NA
CIRCLING	1260-1 ¼ 1255 (1300-1 ¼)	1260-1 ½ 1255 (1300-1 ½)	NA