

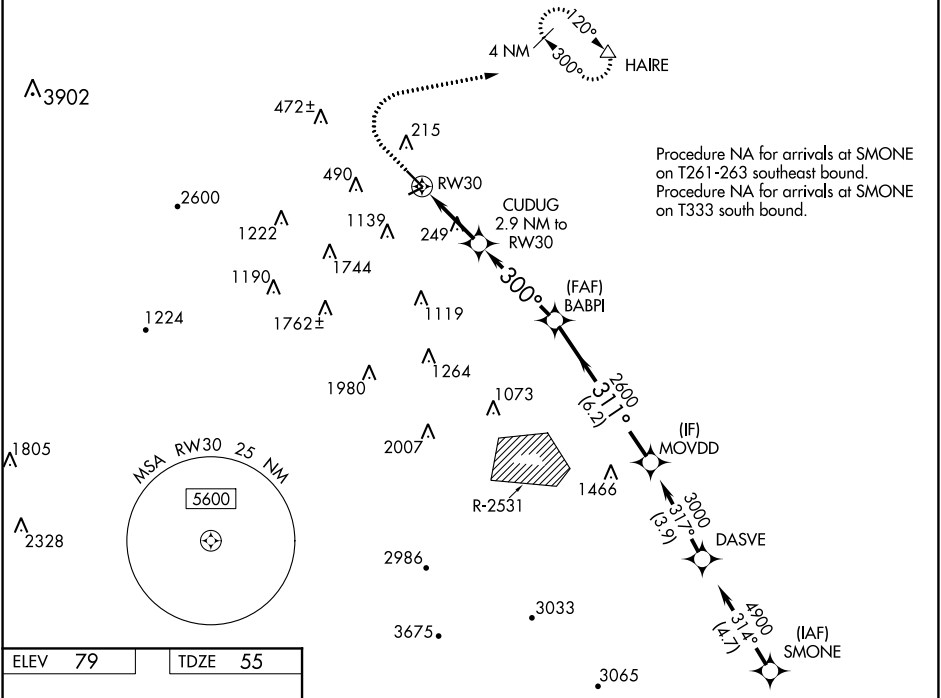
WAAS CH <b>65902</b> <b>W30A</b>	APP CRS <b>300°</b>	Rwy Idg TDZE Apt Elev	<b>4500</b> <b>55</b> <b>79</b>
--	------------------------	-----------------------------	---------------------------------------

# RNAV (GPS) RWY 30

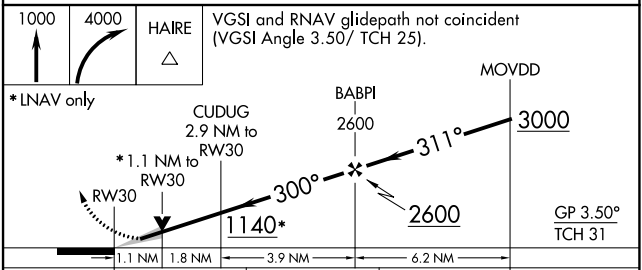
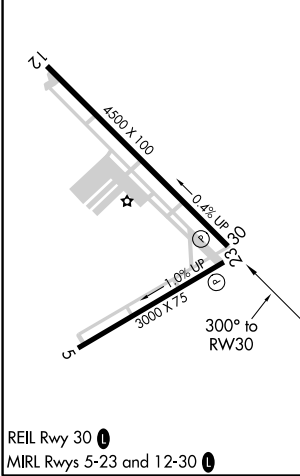
BYRON (C83)

RNP APCH.  
 For uncompensated Baro-VNAV systems, LNAV/VNAV NA below -15°C (5°F) or above 15°C (59°F). Circling NA southwest of Rwy 12-30.  
 MISSED APPROACH: Climb to 1000, then climbing right turn 4000 direct HAIRE and hold, continue climb-in-hold 4000.

AWOS-3 <b>123.775</b>	NORCAL APP CON <b>123.85 278.3</b>	UNICOM <b>123.050 (CTAF)</b>
--------------------------	---------------------------------------	---------------------------------



ELEV 79	TDZE 55
---------	---------



CATEGORY	A	B	C	D
LPV DA		325-7/8	270 (300-7/8)	
LNAV/VNAV DA		404-1 1/8	349 (400-1 1/8)	
LNAV MDA	500-1	445 (500-1)	500-1 3/8	445 (500-1 3/8)
CIRCLING	600-1	521 (600-1)	680-1 3/4 601 (700-1 3/4)	820-2 1/2 741 (800-2 1/2)

# RNAV (GPS) RWY 30

SW-2, 20 MAY 2021 to 17 JUN 2021

SW-2, 20 MAY 2021 to 17 JUN 2021