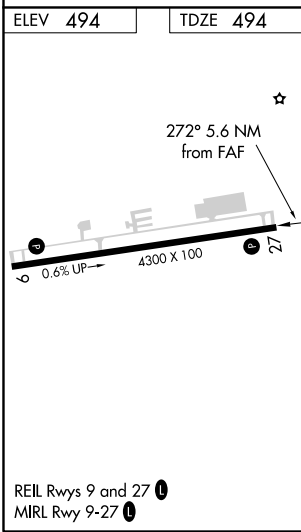
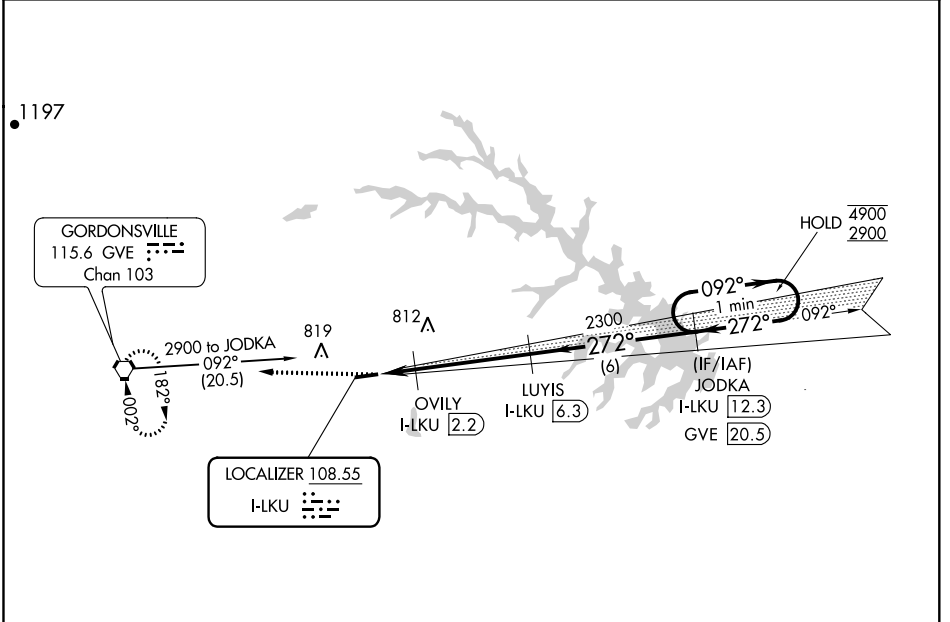


LOC I-LKU 108.55	APP CRS 272°	Rwy Idg TDZE Apt Elev	4300 494 494
----------------------------	------------------------	-----------------------------	---

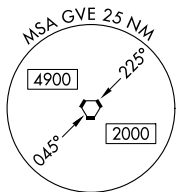
LOC RWY 27

LOUISA COUNTY/FREEMAN FIELD (LKU)

DME required.		MISSED APPROACH: Climb to 2900 direct GVE VORTAC and hold.
AWOS-3 119.475	POTOMAC APP CON 132.85 323.125	UNICOM 122.975 (CTAF) 0



	2900	GVE		JODKA I-LKU 12.3	One Minute Holding Pattern
			OVILY I-LKU 2.2	LUYIS I-LKU 6.3	
			I-LKU 0.8	I-LKU 1.7	
			980	2300	
			0.9 NM	0.5 NM	4.2 NM
CATEGORY	A	B	C	D	
S-LOC 27	820-1	326 (400-1)			NA
CIRCLING	900-1 406 (500-1)	960-1 466 (500-1)			NA



NE-3, 20 MAY 2021 to 17 JUN 2021

NE-3, 20 MAY 2021 to 17 JUN 2021