

WAAS CH 90527 W23A	APP CRS 229°	Rwy Idg TDZE 26 Apt Elev 26	5105
--	------------------------	---	-------------

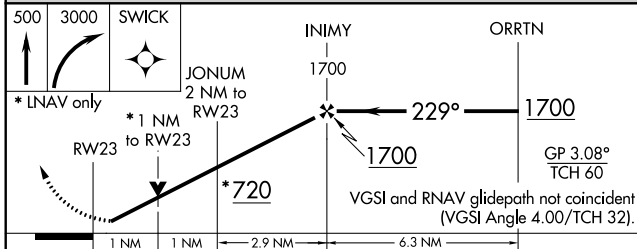
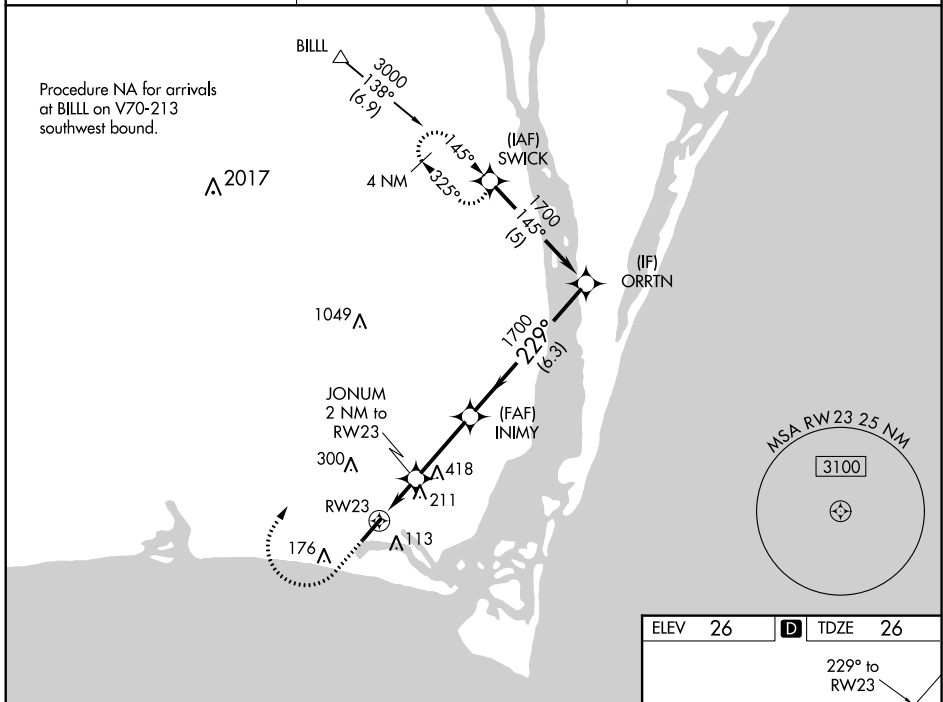
RNAV (GPS) RWY 23

CAPE FEAR RGNL JETPORT/HOWIE FRANKLIN FLD (SUT)

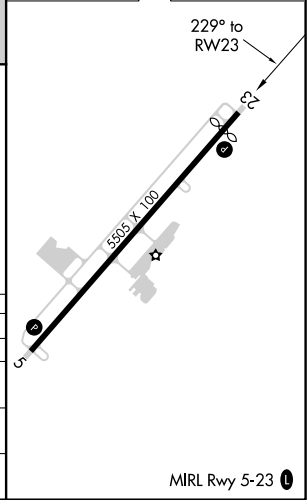
⚠ Baro-VNAV NA when using Wilmington altimeter setting. For uncompensated Baro-VNAV systems, LNAV/VNAV NA below -15°C (5°F) or above 54°C (130°F). When local altimeter setting not received, use Wilmington altimeter setting, and increase all DA 52 feet and all MDA 60 feet. DME/DME RNP-0.3 NA. Helicopter visibility reduction below ¾ SM NA. VDP NA when using Wilmington altimeter setting.

⚠ MISSED APPROACH: Climb to 500 then climbing right turn to 3000 direct SWICK and hold.

AWOS-3P 124.175	WILMINGTON APP CON * 118.25 284.65	UNICOM 123.05 (CTAF) 1
---------------------------	--	----------------------------------



ELEV 26	D TDZE 26
---------	------------------



CATEGORY	A	B	C	D
LPV DA	284-1	258 (300-1)		NA
LNAV/VNAV DA	276-1	250 (300-1)		NA
LNAV MDA	480-1	454 (500-1)	480-1 3/8 454 (500-1 3/8)	NA
CIRCLING	480-1	454 (500-1)	520-1 1/2 494 (500-1 1/2)	NA

RNAV (GPS) RWY 23

SE-2, 20 MAY 2021 to 17 JUN 2021

SE-2, 20 MAY 2021 to 17 JUN 2021