

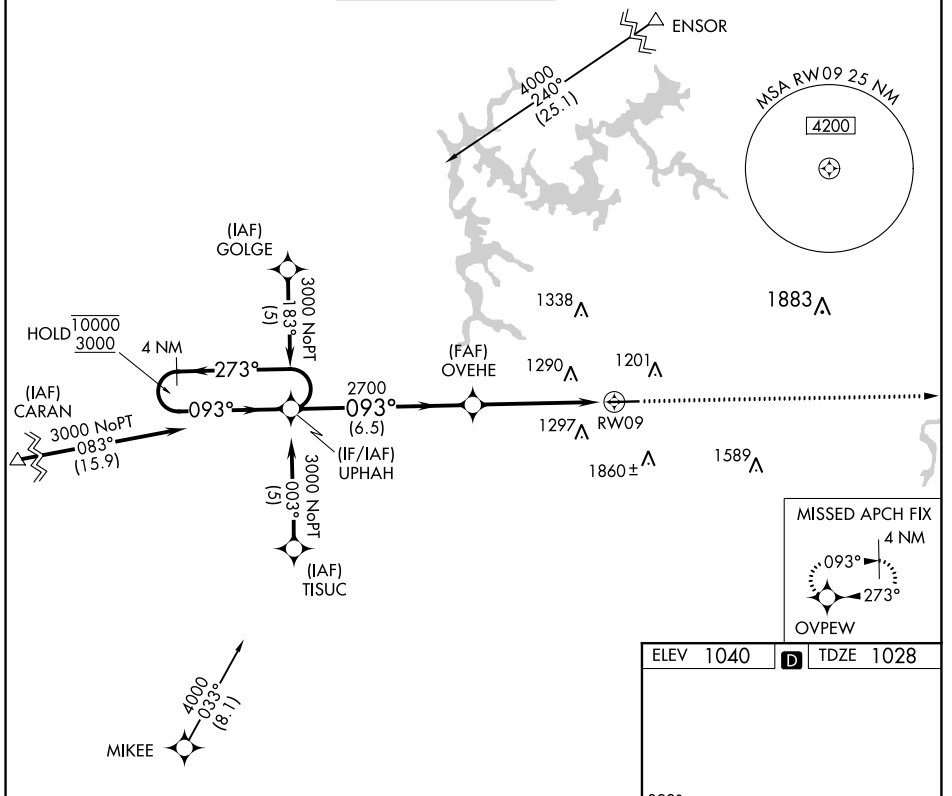
APP CRS 093°	Rwy Idg TDZE Apt Elev	5233 1028 1040
------------------------	-----------------------------	---

RNAV (GPS) RWY 9

COBB COUNTY INTL-McCOLLUM FIELD (RYY)

RNP APCH. ⚠ Rwy 9 helicopter visibility reduction below 1 SM NA. ⚠ Straight-in Rwy 9 NA at night, Circling Rwy 9 NA at night.	MISSED APPROACH: Climb to 3100 direct OVEPEW and hold.
---	--

ATIS 128.125	ATLANTA APP CON 121.0 268.7	McCOLLUM TOWER * 125.9 (CTAF) 0	GND CON 119.0	CLNC DEL 119.0 268.7	UNICOM 122.7
------------------------	---------------------------------------	---	-------------------------	--------------------------------	------------------------



SE-4, 20 MAY 2021 to 17 JUN 2021

SE-4, 20 MAY 2021 to 17 JUN 2021

4 NM Holding Pattern UPHAH 10000 ← 273° 3000 → 093°	Visual Segment - Obstacles. OVEHE RWY 09	3100 ↑ OVEPEW	093° to RWY 09 TWR 1168 6295 X 100 -0.7% UP	
6.5 NM 5.1 NM				
CATEGORY	A	B	C	D
LNNAV MDA	1560-1	532 (600-1)	1560-1½	532 (600-1½)
CIRCLING	1780-1	740 (800-1)	1780-2 740 (800-2)	2220-3 1180 (1200-3)

HIRL Rwy 9-27