

WAAS CH 87104 W18A	APP CRS 182°	Rwy Idg 4999 TDZE 418 Apt Elev 418
---------------------------------	------------------------	---

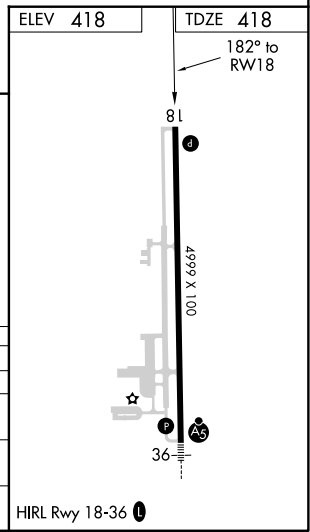
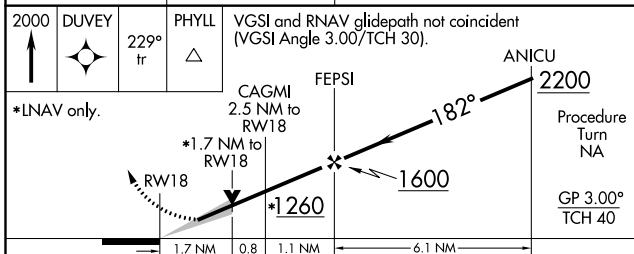
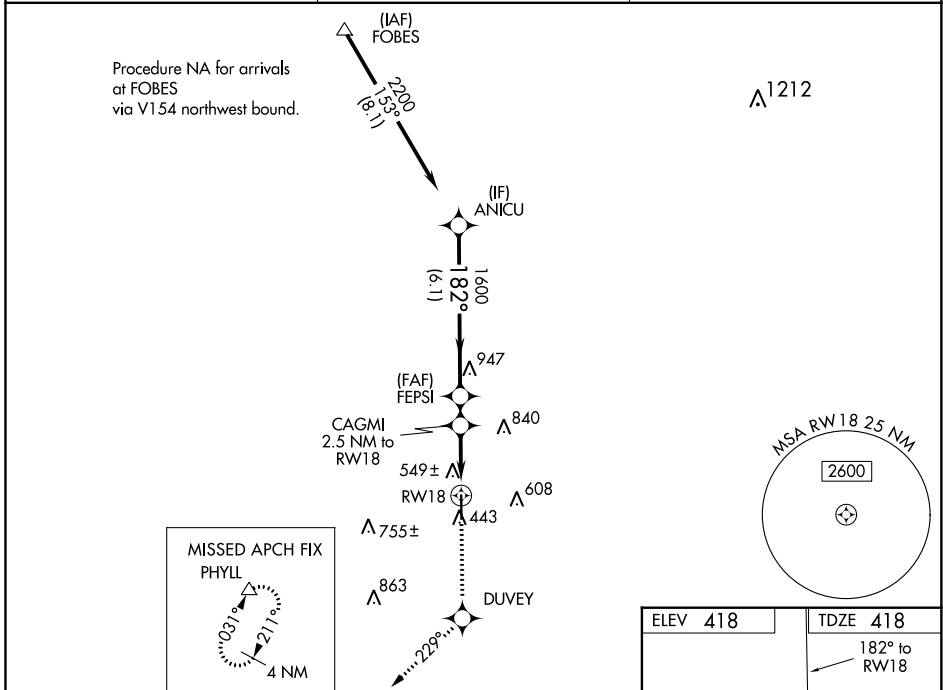
RNAV (GPS) RWY 18

PERRY-HOUSTON COUNTY (PXE)

▽ **△** NA For uncompensated Baro-VNAV systems, LNAV/VNAV NA below -15°C (5°F) or above 47°C (116°F). DME/DME RNP-0.3 NA. If local altimeter setting not received, procedure NA.

MISSED APPROACH: Climb to 2000 direct DUVEY and via 229° track to PHYLL and hold.

AWOS-3 123.825	ATLANTA APP CON ★ 124.2 279.6	UNICOM 122.725 (CTAF) 0
--------------------------	---	-----------------------------------



CATEGORY	A	B	C	D
LPV DA	668-1 250 (300-1)			
LNAV/DA VNAV	854-1½ 436 (500-1½)			
LNAV MDA	980-1 562 (600-1)	980-1½ 562 (600-1½)	980-1¾ 562 (600-1¾)	
CIRCLING	980-1 562 (600-1)	980-1½ 562 (600-1½)	980-2 562 (600-2)	

SE-4, 20 MAY 2021 to 17 JUN 2021

SE-4, 20 MAY 2021 to 17 JUN 2021