

WAAS CH <b>97441</b> <b>W13A</b>	APP CRS <b>126°</b>	Rwy ldg TDZE Apt Elev	<b>8603</b> <b>7057</b> <b>7095</b>
----------------------------------------	------------------------	-----------------------------	-------------------------------------------

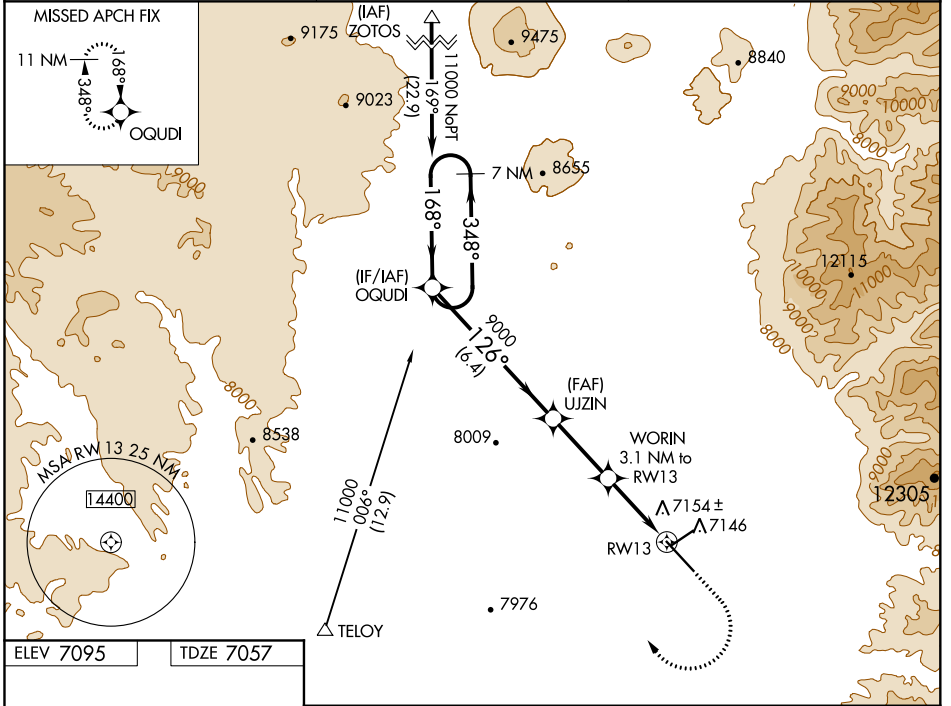
# RNAV (GPS) RWY 13

TAOS RGNL (SKX)

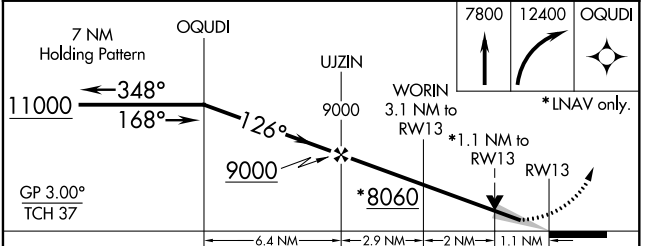
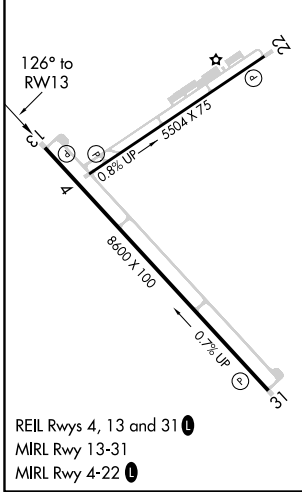
**⚠** For uncompensated Baro-VNAV systems, LNAV/VNAV NA below -29°C (-20°F) or above 47°C (118°F).  
DME/DME RNP-0.3 NA.

**⚠** MISSED APPROACH: (Do not exceed 250K until OQUDI)  
Climb to 7800 then climbing right turn to 12400 direct OQUDI and hold, continue climb-in-hold to 12400.

AWOS-3PT <b>132.975</b>	ALBUQUERQUE CENTER <b>132.8 346.35</b>	UNICOM <b>122.8 (CTAF) 0</b>
----------------------------	-------------------------------------------	---------------------------------



ELEV 7095	TDZE 7057
-----------	-----------



CATEGORY	A	B	C	D
LPV DA		7258- <sup>3</sup> / <sub>4</sub>	200 (200- <sup>3</sup> / <sub>4</sub> )	
LNAV/VNAV DA		7346- <sup>7</sup> / <sub>8</sub>	288 (300- <sup>7</sup> / <sub>8</sub> )	
LNAV MDA		7420-1	362 (400-1)	
<b>C</b> CIRCLING	7600-1 505 (600-1)	7640-1 545 (600-1)	7920-2½ 825 (900-2½)	8020-3 925 (1000-3)

SW-1, 20 MAY 2021 to 17 JUN 2021

SW-1, 20 MAY 2021 to 17 JUN 2021