

(STYCK7.STYCK) 19115

AL-5757 (FAA)

BAYTOWN (HPY)

# STYCK SEVEN DEPARTURE (RNAV)

BAYTOWN, TEXAS

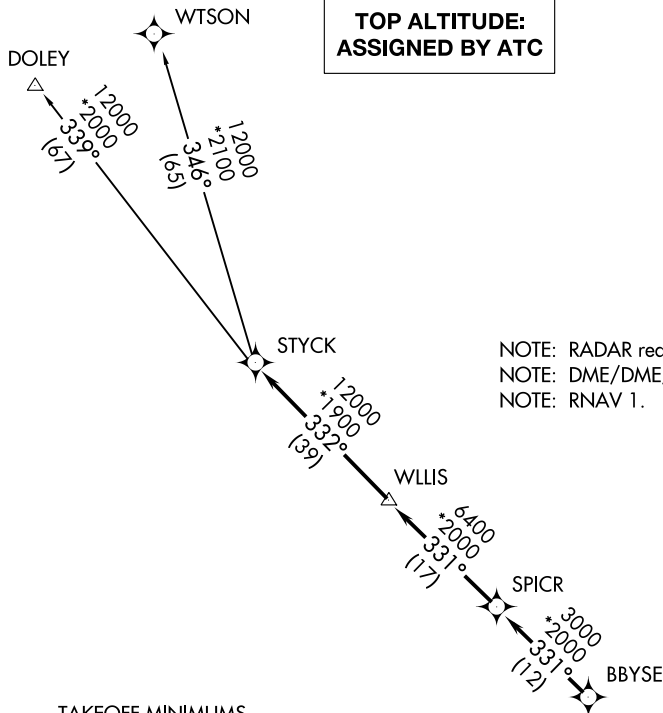
CTAF

122.8

HOUSTON DEP CON

134.45 284.0

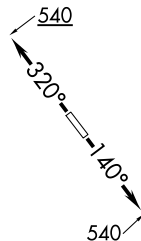
**TOP ALTITUDE:  
ASSIGNED BY ATC**



NOTE: RADAR required.  
NOTE: DME/DME/IRU or GPS required.  
NOTE: RNAV 1.

### TAKEOFF MINIMUMS

Rwys 14, 32: Standard with minimum climb of 500' per NM to 540.



NOTE: Chart not to scale.

### DEPARTURE ROUTE DESCRIPTION

TAKEOFF RWY 14: Climb heading 140° to 540 for RADAR vectors to BBYSE, thence . . .

TAKEOFF RWY 32: Climb heading 320° to 540 for RADAR vectors to BBYSE, thence . . .

. . . on track 331° to SPICR, then on track 331° to WLLIS, then on track 332° to STYCK, then on (transition). Maintain ATC assigned altitude. Expect filed altitude 10 minutes after departure.

DOLEY TRANSITION (STYCK7.DOLEY)

WTSON TRANSITION (STYCK7.WTSON)

# STYCK SEVEN DEPARTURE (RNAV)

(STYCK7.STYCK) 25APR19

BAYTOWN, TEXAS

BAYTOWN (HPY)

SC-5, 20 MAY 2021 to 17 JUN 2021

SC-5, 20 MAY 2021 to 17 JUN 2021