

WAAS CH <b>82215</b> <b>W28A</b>	APP CRS <b>277°</b>	Rwy ldg <b>4971</b> TDZE <b>1134</b> Apt Elev <b>1136</b>
--	------------------------	---

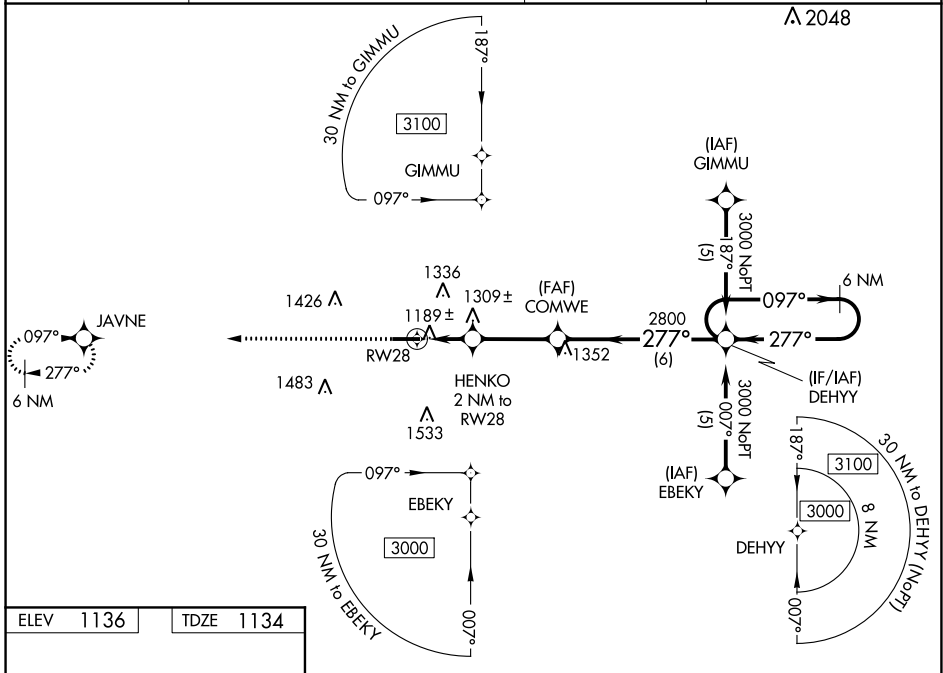
# RNAV (GPS) RWY 28

WAYNE COUNTY (BJJ)

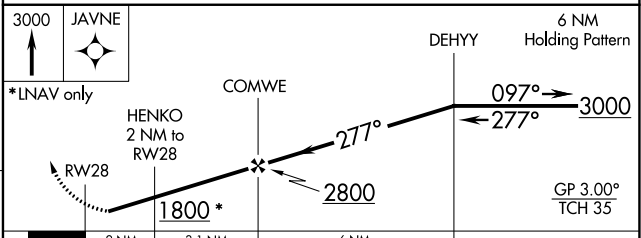
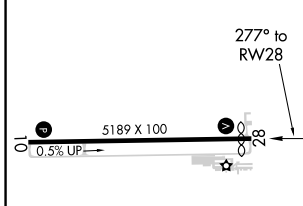
Baro-VNAV NA when using Akron-Canton Rgnl altimeter setting. For uncompensated Baro-VNAV systems, LNAV/VNAV NA below -17°C (2°F) or above 54°C (130°F). Helicopter visibility reduction below 3/4 SM NA. When local altimeter setting not received, use Akron-Canton Rgnl altimeter setting and increase all DA/MDA 60 feet; increase LPV all Cats visibility 1/4 mile. Increase LNAV/VNAV all Cats visibility and LNAV Cat C/D visibility 1/8 mile.

**MISSED APPROACH:** Climb to 3000 direct JAVNE and hold.

ASOS <b>118.075</b>	CLEVELAND APP CON * <b>118.6 371.875</b>	CLNC DEL <b>121.75</b>	UNICOM <b>122.8 (CTAF) 0</b>
------------------------	---	---------------------------	---------------------------------



ELEV 1136	TDZE 1134
-----------	-----------



CATEGORY	A	B	C	D
LPV DA	1398-1 264 (300-1)			
LNAV/VNAV DA	1589-1 1/8 455 (500-1 1/8)			
LNAV MDA	1560-1	426 (500-1)	1560-1 1/4	426 (500-1 1/4)
CIRCLING	1600-1	464 (500-1)	1600-1 1/2	1700-2 564 (600-2)

WOOSTER, OHIO  
Orig-B 21JUL16

40°52'N-81°53'W

# WAYNE COUNTY (BJJ)

## RNAV (GPS) RWY 28

EC-2, 20 MAY 2021 to 17 JUN 2021

EC-2, 20 MAY 2021 to 17 JUN 2021