

WAAS CH <b>56519</b> <b>W24A</b>	APP CRS <b>243°</b>	Rwy Idg TDZE Apt Elev	<b>5013</b> <b>396</b> <b>398</b>
--	------------------------	-----------------------------	---

# RNAV (GPS) RWY 24

HARRISBURG-RALEIGH (HSB)

RNP APCH.

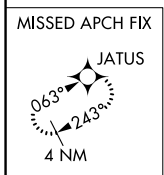
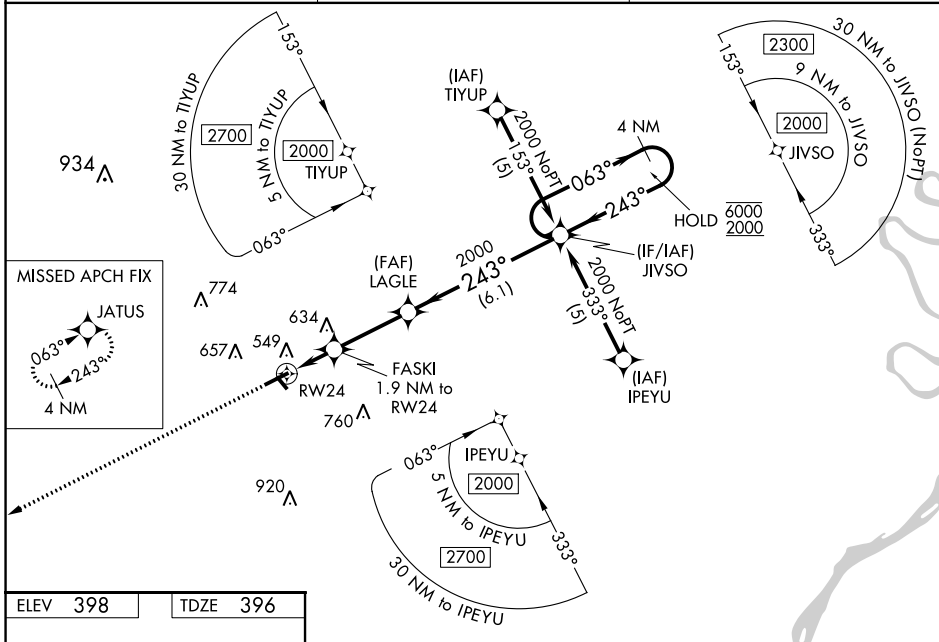
▼ For uncompensated Baro-VNAV systems, LNAV/VNAV NA below -15°C or above 54°C.  
Rwy 24 helicopter visibility reduction below ¾ SM NA.

MISSED APPROACH:  
Climb to 2700 direct  
JATUS and hold.

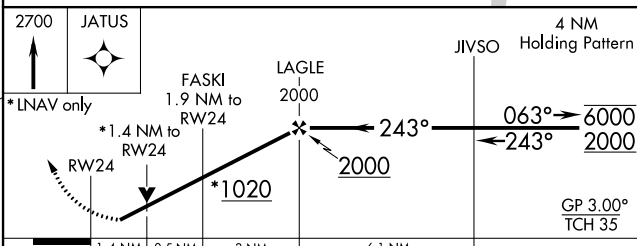
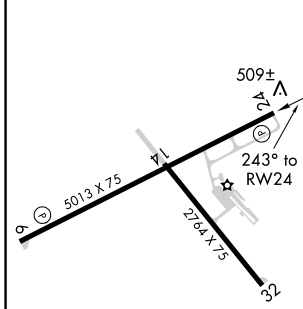
AWOS-3  
**135.925**

KANSAS CITY CENTER  
**127.475 346.275**

UNICOM  
**122.8 (CTAF) 0**



ELEV 398	TDZE 396
----------	----------



CATEGORY	A	B	C	D
LPV DA	697-1 301 (300-1)			
LNAV/VNAV DA	859-1¾ 463 (500-1¾)			
LNAV MDA	880-1	484 (500-1)	880-1¼ 484 (500-1¼)	880-1½ 484 (500-1½)
CIRCLING	880-1 482 (500-1)	1020-1 622 (700-1)	1020-1¾ 622 (700-1¾)	1020-2 622 (700-2)

REIL Rwy 6 and 24 0  
MIRL Rwy 6-24 and 14-32 0

EC-3, 20 MAY 2021 to 17 JUN 2021

EC-3, 20 MAY 2021 to 17 JUN 2021