

APP CRS 345°	Rwy Idg TDZE Apt Elev	3999 667 697
------------------------	-----------------------------	---

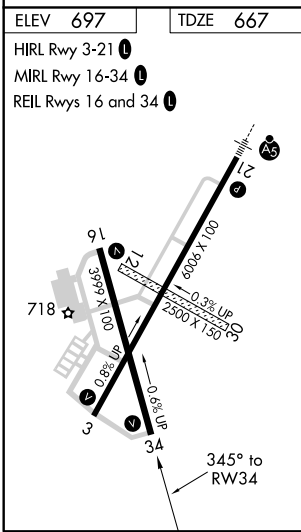
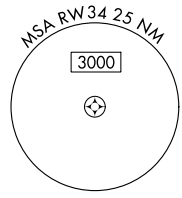
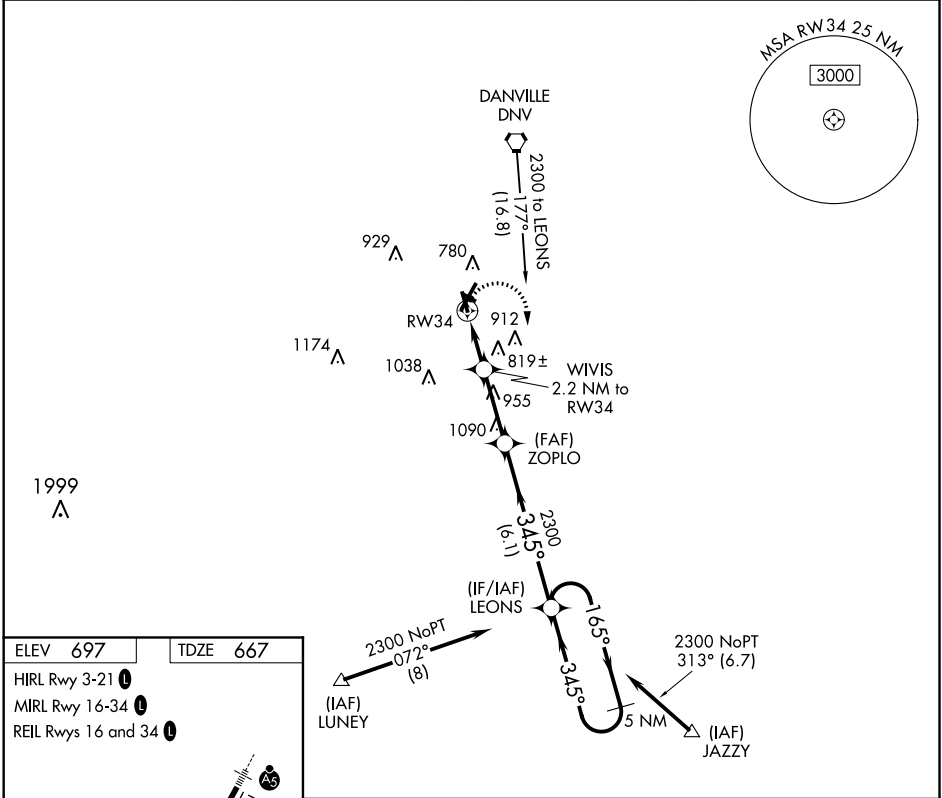
RNAV (GPS) RWY 34

VERMILION RGNL (DNL)

▼ If local altimeter setting not received, use University of Illinois-Willard altimeter setting and increase all MDAs 100 feet. DME/DME RNP-0.3 NA.
▲ Helicopter visibility reduction below ¾ SM NA.

MISSED APPROACH: Climbing right turn to 2300 direct LEONS and hold.

AWOS-3 119.275	CHAMPAIGN APP CON * 121.35 285.65	CLNC DEL 121.7	UNICOM 122.7 (CTAF)
--------------------------	---	--------------------------	-------------------------------



2300 LEONS	VGSI and descent angles not coincident (VGSI Angle 3.00/TCH 14).		
WIVIS 2.2 NM to RW34	ZOPLO	LEONS	5 NM Holding Pattern
345°	1400	2300	2300
2.2 NM	2.8 NM	6.1 NM	
CATEGORY	A	B	C
LNAV MDA	1080-1	413 (400-1)	1080-1¼ 413 (400-1¼)
CIRCLING	1160-1	463 (500-1)	1160-1½ 463 (500-1½) 1260-2 563 (600-2)

EC-3, 20 MAY 2021 to 17 JUN 2021

EC-3, 20 MAY 2021 to 17 JUN 2021