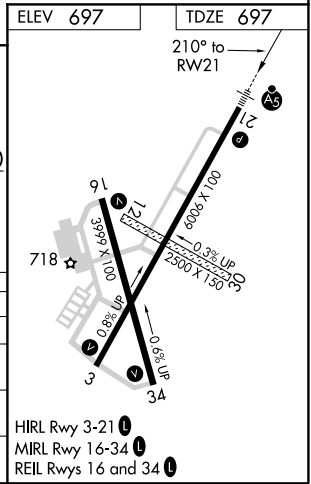
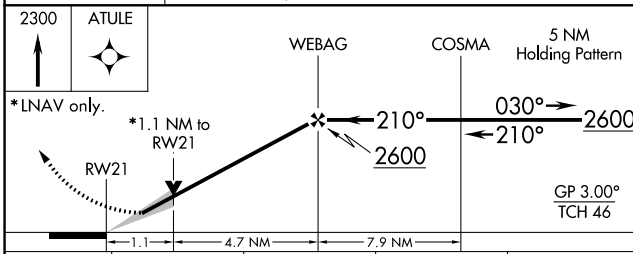
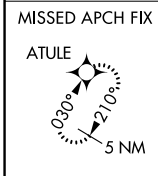
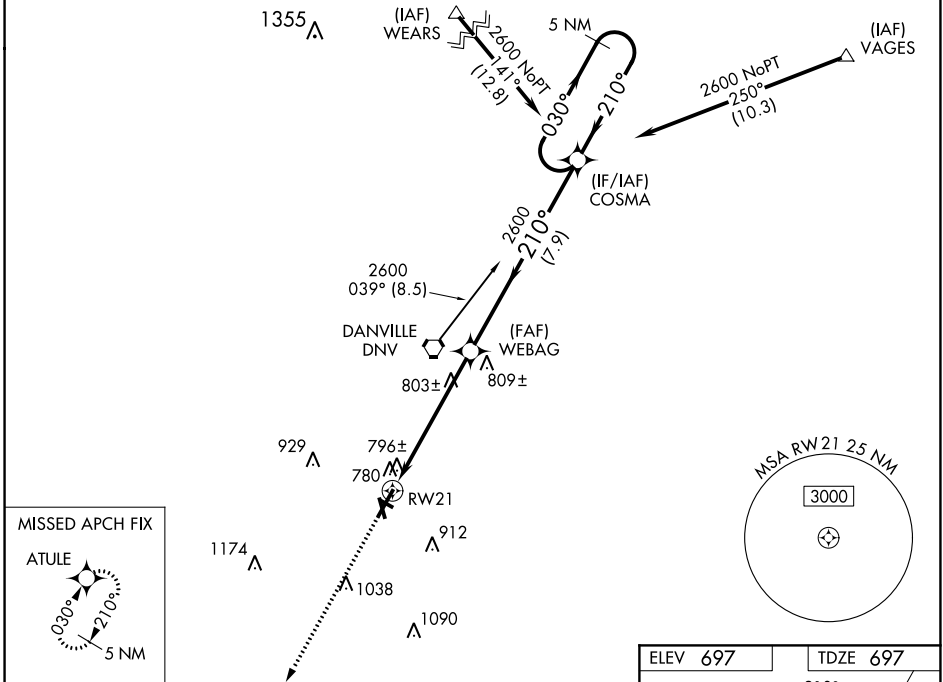


WAAS CH 58004 W21A	APP CRS 210°	Rwy Idg 6006 TDZE 697 Apt Elev 697
--	------------------------	---

RNAV (GPS) RWY 21
VERMILION RGNL (DNL)

<p>⚠ If local altimeter setting not received, use University of Illinois-Willard altimeter setting and increase all DAs/MDAs 100 feet. Baro-VNAV and VDP NA when using University of Illinois-Willard altimeter setting. For uncompensated Baro-VNAV systems, LNAV/VNAV NA below -16°C (4°F) or above 47°C (116°F). For inop MALSR, increase LPV all Cats visibility to 1 mile and LNAV Cat D visibility to 1½ mile. DME/DME RNP-0.3 NA.</p>		<p>MALSR</p>	<p>MISSED APPROACH: Climb to 2300 direct ATULE and hold.</p>
AWOS-3 119.275	CHAMPAIGN APP CON ★ 121.35 285.65	CLNC DEL 121.7	UNICOM 122.7 (CTAF) 0



CATEGORY	A		B		C		D
LPV DA	990-½		293 (300-½)				
LNAV/VNAV DA	1069-¾		372 (400-¾)				
LNAV MDA	1080-½		383 (400-½)		1080-1		383 (400-1)
CIRCLING	1160-1		463 (500-1)		1160-1½		1260-2
					463 (500-1½)		563 (600-2)