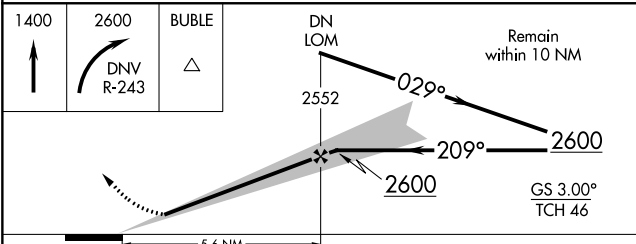
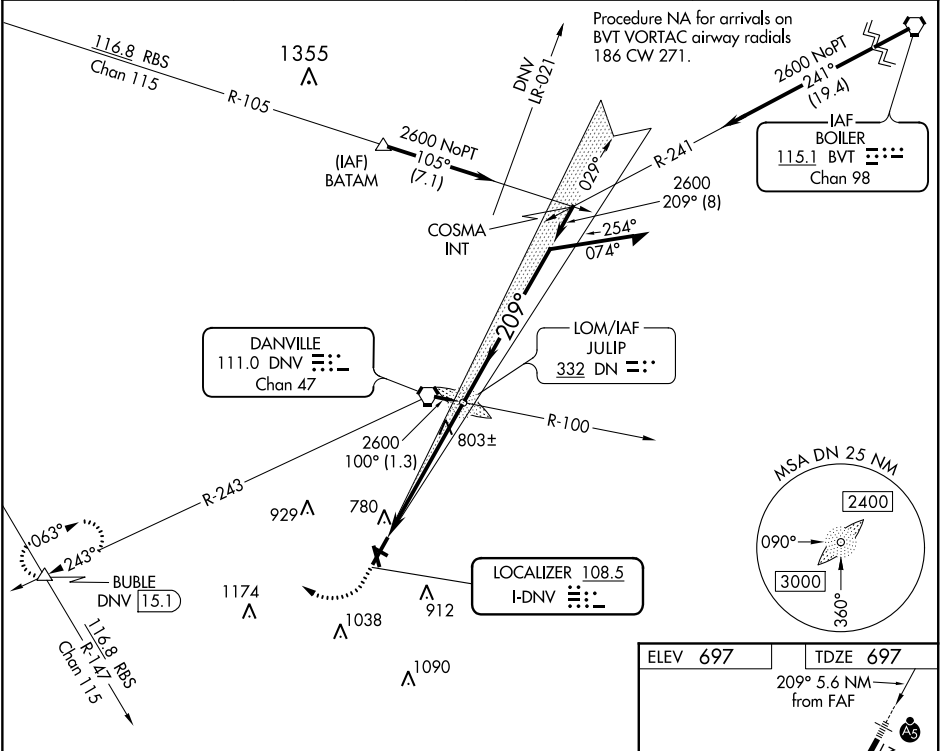


LOC I-DNV 108.5	APP CRS 209°	Rwy Idg 6006
		TDZE 697
		Apt Elev 697

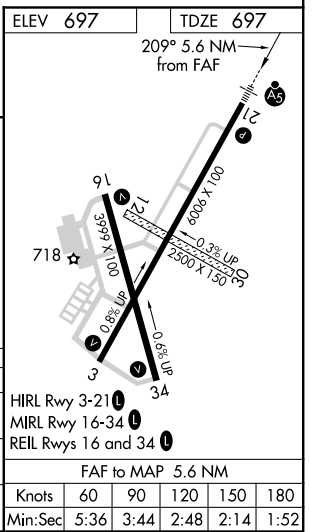
ILS or LOC RWY 21

VERMILION RGNL (DNV)

<p>▼ If local altimeter not received, use University of Illinois-Willard altimeter setting, and increase all DAs/MDAs 100 feet.</p> <p>▲ MALSR</p>	<p>MISSED APPROACH: Climb to 1400, then climbing right turn to 2600 via DNV R-243 to BUBLE INT and hold.</p>		
AWOS-3 119.275	CHAMPAIGN APP CON ★ 121.35 285.65	CLNC DEL 121.7	UNICOM 122.7 (CTAF) ☺



1400	2600	BUBLE	DN LOM	Remain within 10 NM
↑	DNV R-243	△	2552	029°
			2600	209°
			2600	GS 3.00° TCH 46
5.6 NM				
CATEGORY	A	B	C	D
S-ILS 21	897-½ 200 (200-½)			
S-LOC 21	1080-½ 383 (400-½)		1080-¾ 383 (400-¾)	
CIRCLING	1160-1 463 (500-1)		1160-1½ 1260-2 463 (500-1½) 563 (600-2)	



EC-3, 20 MAY 2021 to 17 JUN 2021

EC-3, 20 MAY 2021 to 17 JUN 2021