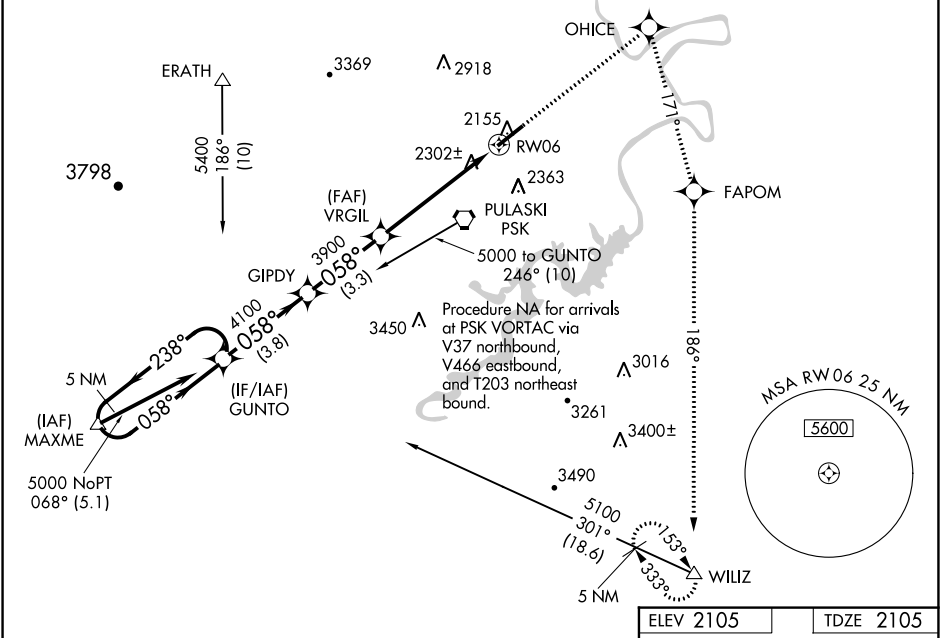


WAAS CH 87015 W06A	APP CRS 058°	Rwy Idg TDZE Apt Elev	6201 2105 2105
--	------------------------	-----------------------------	---

RNAV (GPS) RWY 6

NEW RIVER VALLEY (PSK)

RNP APCH.		MALSR AS	MISSED APPROACH: Climb to 6000 direct OHICE and right turn via track 171° to FAPOM and via track 186° to WILIZ and hold.
<p>⚠ For uncompensated Baro-VNAV systems, LNAV/VNAV NA below -19°C or above 44°C. When local altimeter setting not received, use Blacksburg altimeter setting and increase all DA 36 feet, and all MDA 40 feet. VDP and Baro-VNAV NA when using Blacksburg altimeter setting. Inop table does not apply to LPV all Cats and LNAV Cats A and B. For inop MALSR, increase LNAV Cat C visibility to 1 1/4 SM.</p>			
AWOS-3 127.375	ROANOKE APP CON 126.0 339.8	ROANOKE CLNC DEL 121.7	UNICOM 122.7 (CTAF)



NE-3, 20 MAY 2021 to 17 JUN 2021

NE-3, 20 MAY 2021 to 17 JUN 2021

5 NM Holding Pattern		ELEV 2105		TDZE 2105	
<p>5000 ← 238° / 058° →</p> <p>GP 3.00° TCH 58</p>		<p>OHICE</p> <p>FAPOM</p> <p>WILIZ</p>		<p>2174±A</p> <p>2113±A</p> <p>2166±A</p> <p>2268</p>	
<p>GUNTO</p> <p>GIPDY</p> <p>VRGIL</p> <p>GUNTO</p>		<p>3900</p> <p>3900</p> <p>3900</p> <p>3900</p>		<p>RW06</p> <p>RW06</p> <p>RW06</p> <p>RW06</p>	
<p>3.8 NM</p> <p>3.3 NM</p> <p>4.1 NM</p> <p>1.3 NM</p>		<p>3.3 NM</p> <p>4.1 NM</p> <p>1.3 NM</p>		<p>0.58° to RW06</p>	
CATEGORY	A	B	C	D	
LPV DA		2305-1	200 (200-1)		
LNAV/ VNAV DA		2597-1 1/4	492 (500-1 1/4)		
LNAV MDA		2560-1	455 (500-1)		
CIRCLING	2620-1	515 (600-1)	2620-1 1/2	2680-2	
			515 (600-1 1/2)	575 (600-2)	
				HIRL Rwy 6-24	
				REIL Rwy 24	