

LOC I-PSK <b>110.9</b>	APP CRS <b>058°</b>	Rwy Idg TDZE Apt Elev	<b>6201</b> <b>2105</b> <b>2105</b>
---------------------------	------------------------	-----------------------------	---

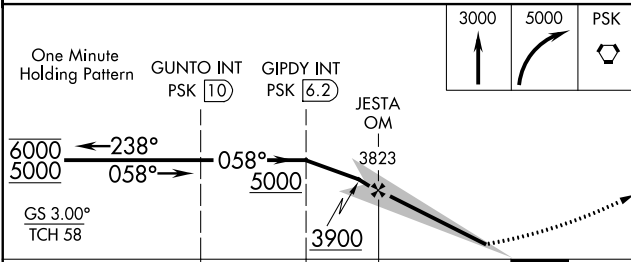
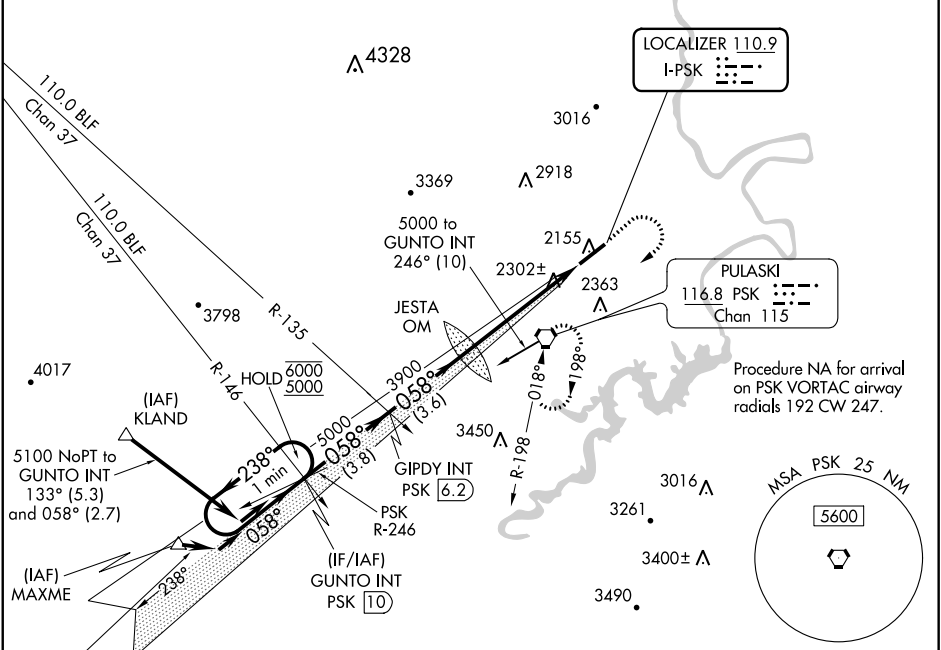
# ILS or LOC Z RWY 6

## NEW RIVER VALLEY (PSK)

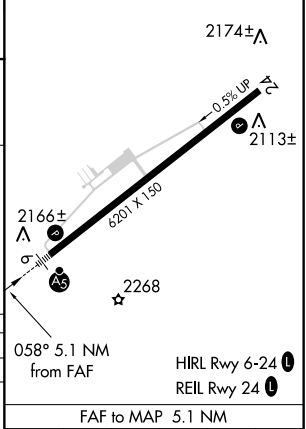
**NA** Inop table does not apply to S-ILS 6 all Cats and S-LOC 6 Cats A and B. For inop ALS, increase S-LOC 6 Cat C/D visibility to 1 3/8 SM. Circling NA for Cat D northwest of Rwy 6-24.

**MALSR**  
MISSED APPROACH: Climb to 3000 then climbing right turn to 5000 direct PSK VORTAC and hold, continue climb-in-hold to 5000.

AWOS-3 <b>127.375</b>	ROANOKE APP CON <b>126.0 339.8</b>	ROANOKE CLNC DEL <b>121.7</b>	UNICOM <b>122.7 (CTAF)</b>
--------------------------	---------------------------------------	----------------------------------	-------------------------------



ELEV 2105	TDZE 2105
-----------	-----------



NE-3, 20 MAY 2021 to 17 JUN 2021

NE-3, 20 MAY 2021 to 17 JUN 2021