


LOC I-ISO	APP CRS	Rwy Idg	10960
111.3	050°	TDZE	93
		Apt Elev	93

ILS or LOC RWY 5

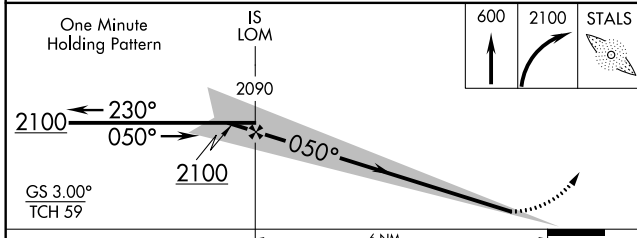
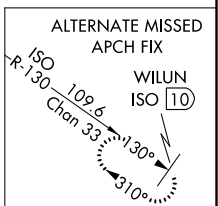
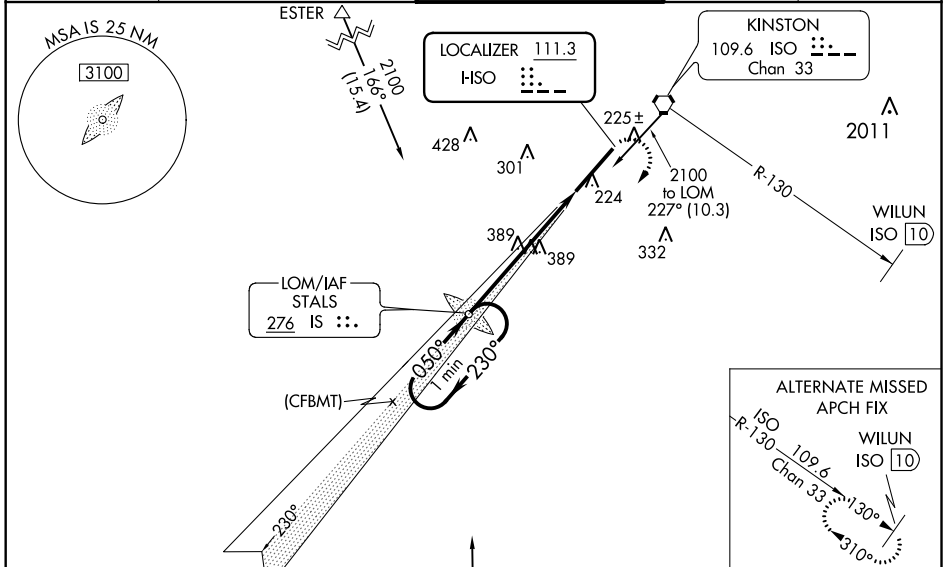
KINSTON RGNL JETPORT AT STALLINGS FIELD (ISO)

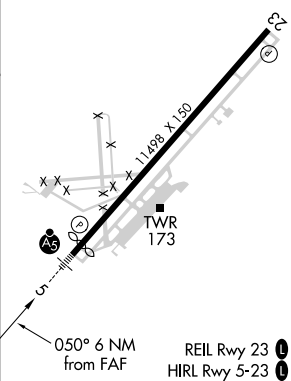
ADF Required. When local altimeter setting not received, use Seymour Johnson AFB altimeter setting and increase DA to 336; increase all MDA 60 feet and S-LOC 5 Cats C and D visibility 1/8 mile and Circling Cat D visibility 1/4 mile. For inop MALS, increase S-LOC 5 Cats C and D visibility to 1 1/8 mile. For inop MALS when using Seymour Johnson AFB altimeter setting, increase S-LOC 5 Cats C and D visibility to 1 3/4 mile.
**** RVR 1800 authorized with use of FD or AP or HUD to DA, NA when using Seymour Johnson AFB altimeter setting.**

MALS


MISSED APPROACH:
 Climb to 600 then climbing right turn to 2100 direct STALS LOM and hold.

AWOS-3	SEYMOUR JOHNSON APP CON *	KINSTON TOWER *	GND CON	UNICOM
132.75	127.3 273.6	120.6 (CTAF) 0 335.55	121.9	122.95



ELEV	93	TDZE	93
			
FAF to MAP 6 NM			
Knots	60	90	120 150 180
Min:Sec	6:00	4:00	3:00 2:24 2:00

CATEGORY	A	B	C	D
S-ILS 5 **	293/24		200 (200-1/2)	
S-LOC 5	640/24	547 (600-1/2)		640/60 547 (600-1 1/4)
C CIRCLING	640-1	547 (600-1)		700-1 3/4 607 (700-1 3/4) 740-2 647 (700-2)

ILS or LOC RWY 5

SE-2, 20 MAY 2021 to 17 JUN 2021

SE-2, 20 MAY 2021 to 17 JUN 2021