

WAAS CH 61099 W36A	APP CRS 356°	Rwy Idg TDZE 1307 Apt Elev 1324	5602
--	------------------------	---	-------------

RNAV (GPS) RWY 36

BEATRICE MUNI (BIE)

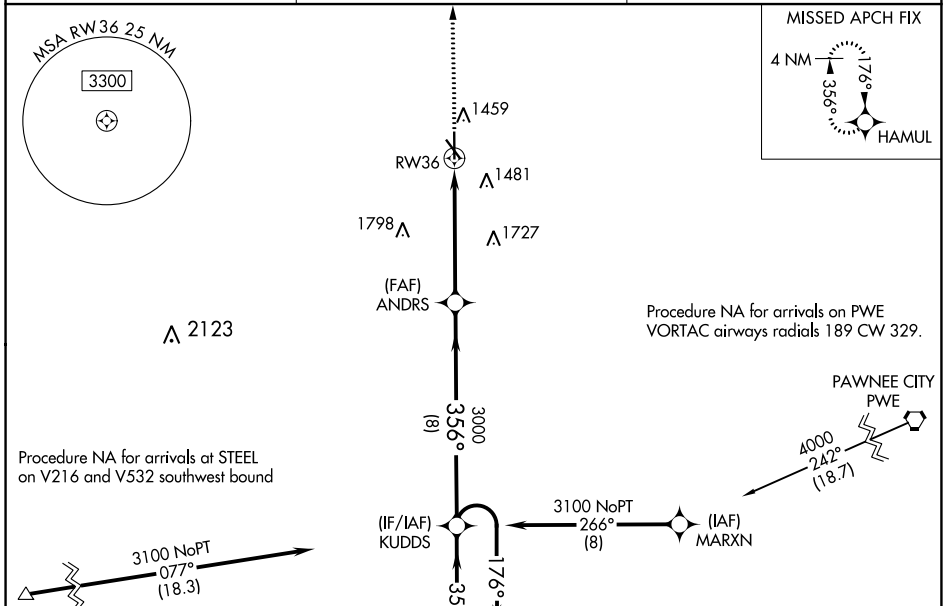
⚠ Inoperative table does not apply to LPV all Cats. For uncompensated Baro-VNAV systems, LNAV/VNAV NA below -22°C (-7°F) or above 54°C (130°F). For inoperative MALSR, increase LNAV/VNAV all Cats visibility to ½ mile and LNAV Cat A/B visibility to 1. DME/DME RNP-0.3 NA.

MALSR
AS
MISSED APPROACH: Climb to 3900 direct HAMUL and hold.

AWOS-3
125.325

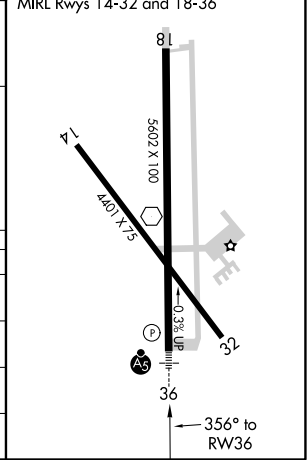
MINNEAPOLIS CENTER
126.4 317.7

UNICOM
122.8 (CTAF)



ELEV 1324	D	TDZE 1307
REIL Rwy 14 and 32		
MIRL Rwy 14-32 and 18-36		

CATEGORY	A	B	C	D
LPV DA		1507-¾	200 (200-¾)	
LNAV/VNAV DA		1559-¾	252 (300-¾)	
LNAV MDA	1840-¾	533 (600-¾)	1840-1	533 (600-1)
C CIRCLING	1840-1	516 (600-1)	2000-2 676 (700-2)	2100-2½ 776 (800-2½)



NC-2, 20 MAY 2021 to 17 JUN 2021

NC-2, 20 MAY 2021 to 17 JUN 2021