

# WILKES-BARRE FOUR ARRIVAL

TETERBORO, NEW JERSEY

NE-2, 20 MAY 2021 to 17 JUN 2021

NEW YORK APP CON  
127.6 379.9  
EWR D-ATIS  
115.7

JAMESTOWN  
114.7 JHW  
Chan 94  
N42°11.32'-W79°07.28'  
L-30, H-10

DMACK  
N41°47.15'  
W77°33.12'

HOXIE  
N41°51.90'  
W77°51.16'

STENT  
N41°40.74'  
W77°09.17'

HARTY  
N41°04.27'  
W75°05.39'

ALLENTOWN  
117.5 FIC  
Chan 122

MUGZY  
N41°01.81'  
W74°58.16'  
Expect 6000

WILKES-BARRE  
111.6 LVZ  
Chan 53  
N41°16.37'-W75°41.37'  
Expect FL180

ELMIRA  
109.65 ULW  
Chan 33 (Y)

ELMIRA  
109.65 ULW  
Chan 33 (Y)

WILKES-BARRE  
111.6 LVZ  
Chan 53  
N41°16.37'-W75°41.37'  
Expect FL180

SPARTA  
115.7 SAX  
Chan 104

HUGUENOT  
116.1 HUO  
Chan 108

STILLWATER  
109.6 STW  
Chan 33  
N40°59.75'-W74°52.14'

ESSEX COUNTY  
TETERBORO

MORRISTOWN MUNI

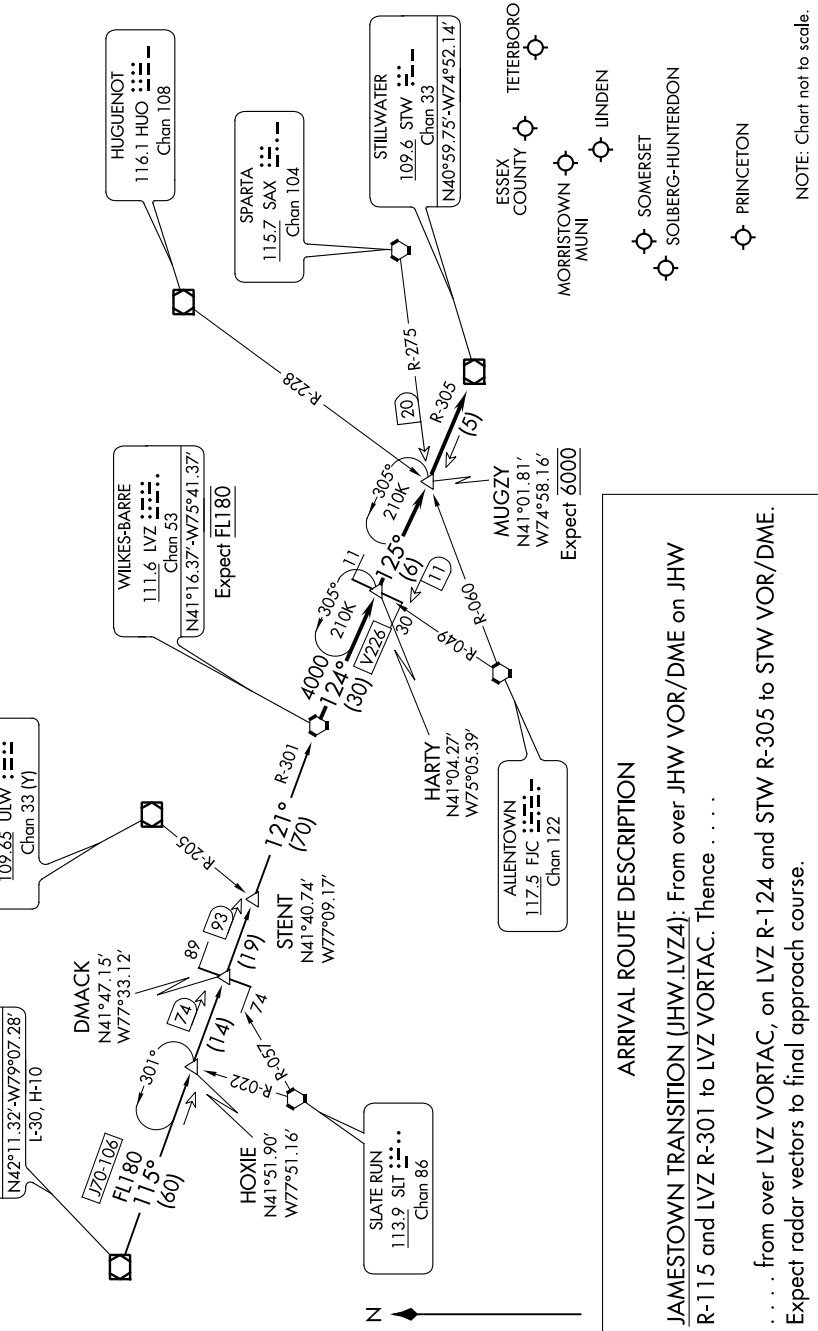
LINDEN

SOMERSET  
SOLBERG-HUNTERDON  
PRINCETON

# WILKES-BARRE FOUR ARRIVAL

TETERBORO, NEW JERSEY

NOTE: This STAR applicable to all aircraft capable of 250 KIAS or greater landing at Teterboro, Morristown Muni, Essex County, Princeton, Solberg-Hunterdon, Linden, and Somerset.  
NOTE: Advise ATC prior to speed reduction below 250 Knots.



**ARRIVAL ROUTE DESCRIPTION**

JAMESTOWN TRANSITION (JHW.LVZ4): From over JHW VOR/DME on JHW R-115 and LVZ R-301 to LVZ VORTAC. Thence . . . . .

. . . . . from over LVZ VORTAC, on LVZ R-124 and STW R-305 to STW VOR/DME. Expect radar vectors to final approach course.

NOTE: Chart not to scale.

NE-2, 20 MAY 2021 to 17 JUN 2021