

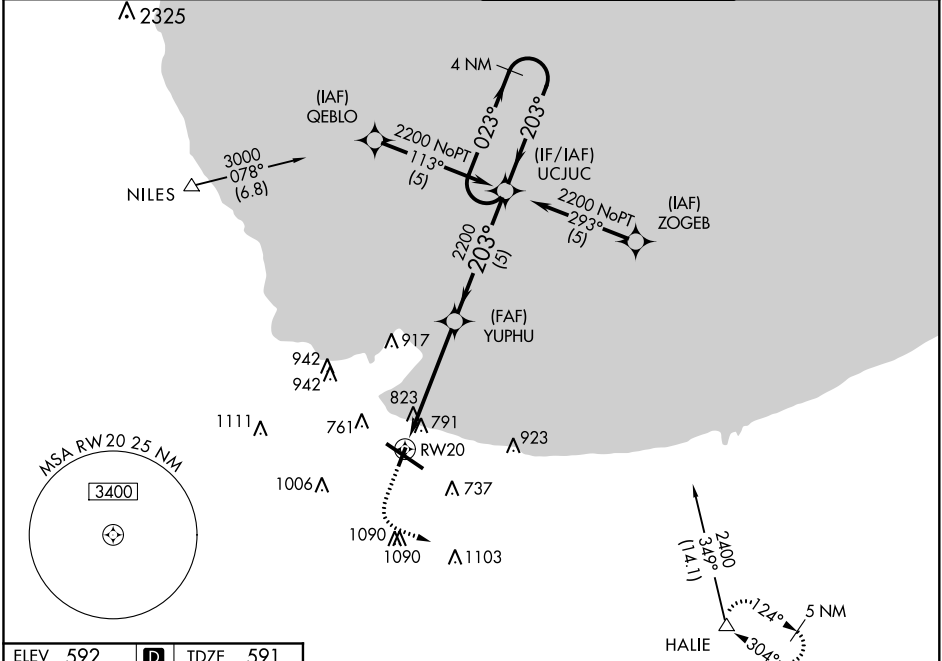
APP CRS <b>203°</b>	Rwy Idg <b>3604</b>
	TDZE <b>591</b>
	Apt Elev <b>592</b>

# RNAV (GPS) RWY 20

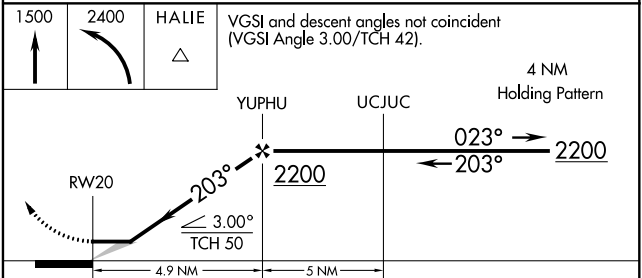
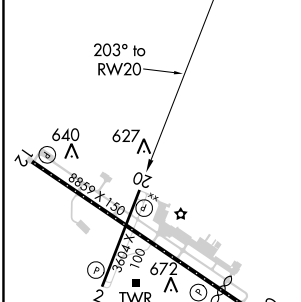
GARY/CHICAGO INTL (GYY)

<b>▽</b> GPS or RNP-0.3 required.	MISSED APPROACH: Climb to 1500 then climbing left turn to 2400 direct HALIE WP and hold.
<b>△</b> NA	

ATIS <b>134.575</b>	CHICAGO APP CON <b>133.1 285.6</b>	GARY TOWER ★ <b>125.6 (CTAF) 0</b>	GND CON <b>121.9</b>
------------------------	---------------------------------------	---------------------------------------	-------------------------



ELEV 592	<b>D</b>	TDZE 591
----------	----------	----------



CATEGORY	A	B	C	D
GLS PA DA	NA			
LNAV/VNAV DA	NA			
LNAV MDA	1080-1 489 (500-1)	1080-1¼ 489 (500-1¼)	1080-1½ 489 (500-1½)	1080-1½ 489 (500-1½)
CIRCLING	1140-1 548 (600-1)	1180-1½ 588 (600-1½)	1180-2 588 (600-2)	1180-2 588 (600-2)

REIL Rwy 2, 12 and 20 **0**  
 HIRL Rwy 12-30 **0**  
 MIRL Rwy 2-20 **0**

EC-2, 20 MAY 2021 to 17 JUN 2021

EC-2, 20 MAY 2021 to 17 JUN 2021