

LOC/DME I-GYY	APP CRS	Rwy Idg	7959
108.75	306°	TDZE	591
Chan 24 (Y)		Apt Elev	597

ILS or LOC RWY 30

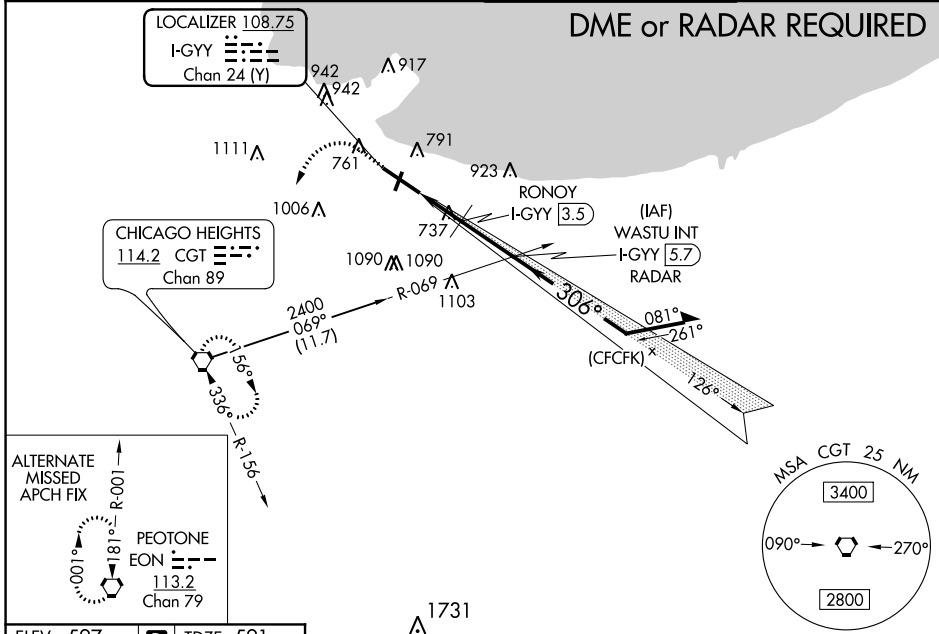
GARY/CHICAGO INTL (GYG)

⚠ When local altimeter setting not received, use Chicago Midway Intl altimeter setting and increase all DA 46 feet and all MDA 60 feet, increase S-LOC 30 Cat C/D visibility to 1 3/8 miles, increase Circling Cat C/D and RONOY fix minimums Circling Cat C/D visibility 1/4 mile. VDP NA with Chicago Midway Intl altimeter setting. **RVR 1800 authorized with use of FD or AP or HUD to DA, NA when using Chicago Midway Intl.

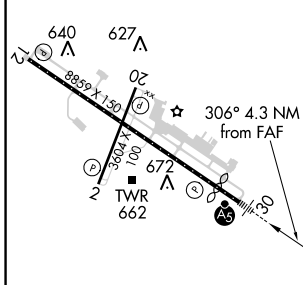
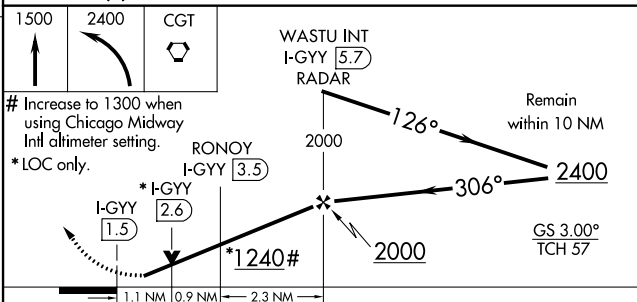


MISSED APPROACH: Climb to 1500 then climbing left turn to 2400 direct CGT VORTAC and hold.

ATIS 134.575	CHICAGO APP CON 133.1 285.6	GARY TOWER * 125.6 (CTAF) 0	GND CON 121.9
------------------------	---------------------------------------	---------------------------------------	-------------------------



ELEV 597	D	TDZE 591
----------	---	----------



FAF to MAP 4.3 NM					
Knots	60	90	120	150	180
Min:Sec	4:18	2:52	2:09	1:43	1:26

CATEGORY	A	B	C	D
S-ILS 30**	791/24 200 (200-1/2)			
S-LOC 30	1240/24	649 (700-1/2)	1240-1 3/8	649 (700-1 3/8)
C CIRCLING	1240-1	643 (700-1)	1400-2 1/4	1420-2 3/4
			803 (900-2 1/4)	823 (900-2 3/4)
RONOY FIX MINIMUMS				
S-LOC 30	1000/24	409 (500-1/2)	1000/40	409 (500-3/4)
C CIRCLING	1140-1	1180-1	1400-2 1/4	1420-2 3/4
	543 (600-1)	583 (600-1)	803 (900-2 1/4)	823 (900-2 3/4)

EC-2, 20 MAY 2021 to 17 JUN 2021

EC-2, 20 MAY 2021 to 17 JUN 2021