

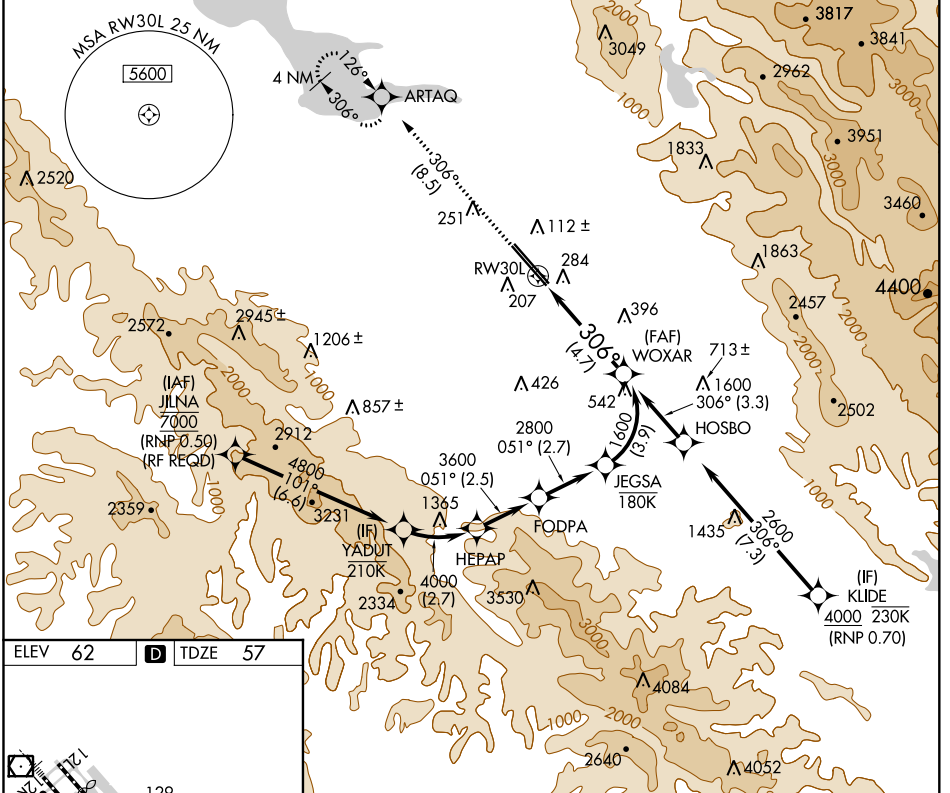
APP CRS	Rwy Idg	<b>7614</b>
<b>306°</b>	TDZE	<b>57</b>
	Apt Elev	<b>62</b>

# RNAV (RNP) Z RWY 30L

NORMAN Y MINETA SAN JOSE INTL (SJC)

<p><b>▽</b> For uncompensated Baro-VNAV systems, procedure NA below -1°C (31°F) or above 54°C (130°F). GPS required. For inoperative MALSR, increase RNP 0.15 all Cats visibility to RVR 6000 and increase RNP 0.30 all Cats visibility to 1½ mile.</p>				<p><b>MALSR</b></p>		<p><b>MISSED APPROACH:</b> Climb to 2300 on track 306° to ARTAQ and hold.</p>	
---	--	--	--	---------------------	--	---	--

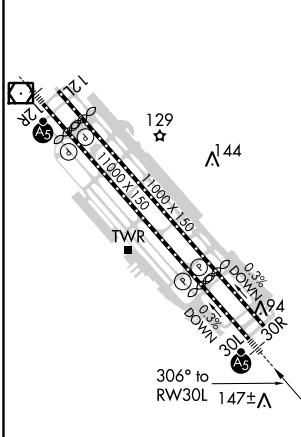
D-ATIS	NORCAL APP CON	SAN JOSE TOWER ★	GND CON	CLNC DEL	CPDLC	UNICOM
<b>126.95</b>	<b>120.1 290.25</b>	<b>124.0 (CTAF) 0 257.6</b>	<b>121.7</b>	<b>118.0</b>		<b>122.95</b>



SW-2, 20 MAY 2021 to 17 JUN 2021

SW-2, 20 MAY 2021 to 17 JUN 2021

ELEV 62	<b>D</b>	TDZE 57
---------	----------	---------



2300	ARTAQ	VGSI and RNAV glidepath not coincident (VGSI Angle 3.00/TCH 70).	WOXAR
tr 306°			1600
See planview for multiple IF locations.			
RW30L			1600
			GP 3.00°
			TCH 54

CATEGORY	A	B	C	D
RNP 0.15 DA		421/40	364 (400-¾)	
RNP 0.30 DA		544/60	487 (500-1¼)	

## AUTHORIZATION REQUIRED