

APP CRS	Rwy Idg	8587
126°	TDZE	46
	Apt Elev	62

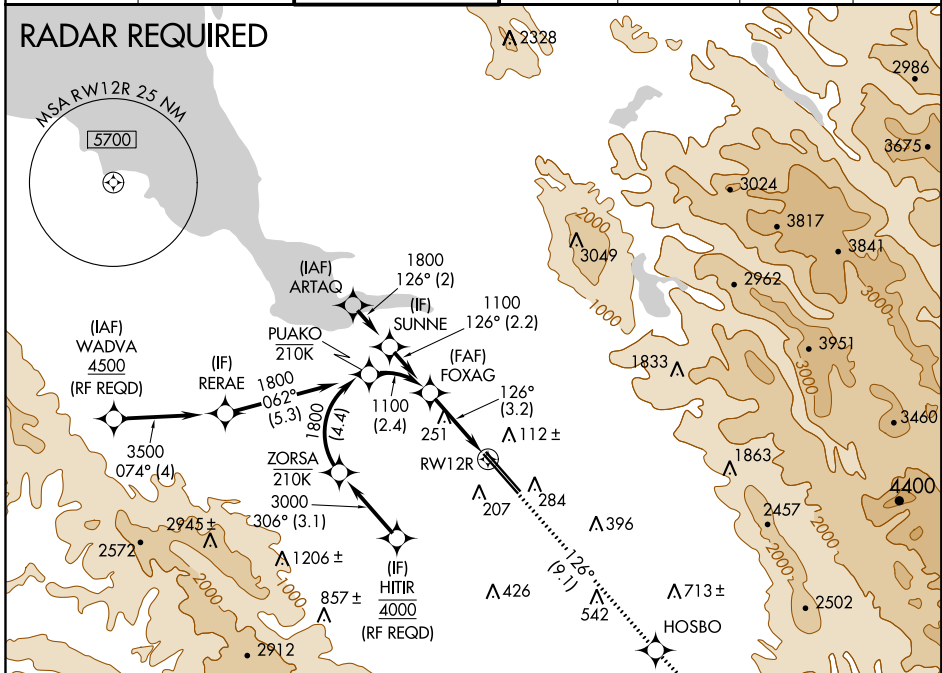
RNAV (RNP) Z RWY 12R

NORMAN Y MINETA SAN JOSE INTL (SJC)

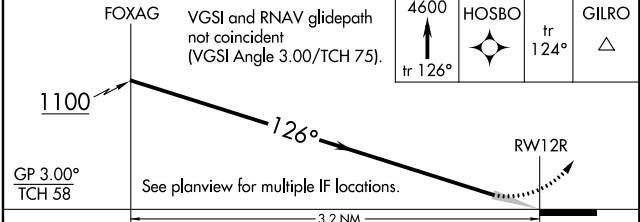
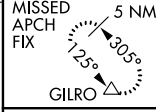
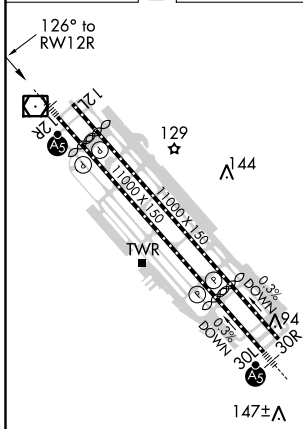
For uncompensated Baro-VNAV systems, procedure NA below 0°C (32°F) or above 54°C (130°F). GPS required.	MALS MISSED APPROACH: Climb to 4600 on track 126° to HOSBO and on track 124° to GILRO and hold.		

D-ATIS 126.95	NORCAL APP CON 120.1 290.25	SAN JOSE TOWER* 124.0 (CTAF) 0 257.6	GND CON 121.7	CLNC DEL 118.0	CPDLC	UNICOM 122.95
-------------------------	---------------------------------------	--	-------------------------	--------------------------	-------	-------------------------

RADAR REQUIRED



ELEV 62	D	TDZE 46
---------	----------	---------



GP 3.00° TCH 58	See planview for multiple IF locations.			
CATEGORY	A	B	C	D
RNP 0.15 DA		380-5/8	334 (400-5/8)	
RNP 0.30 DA		486-1	440 (500-1)	

REIL Rwy 12L
HIRL Rwy 12L-30R and 12R-30L

AUTHORIZATION REQUIRED

SW-2, 20 MAY 2021 to 17 JUN 2021

SW-2, 20 MAY 2021 to 17 JUN 2021