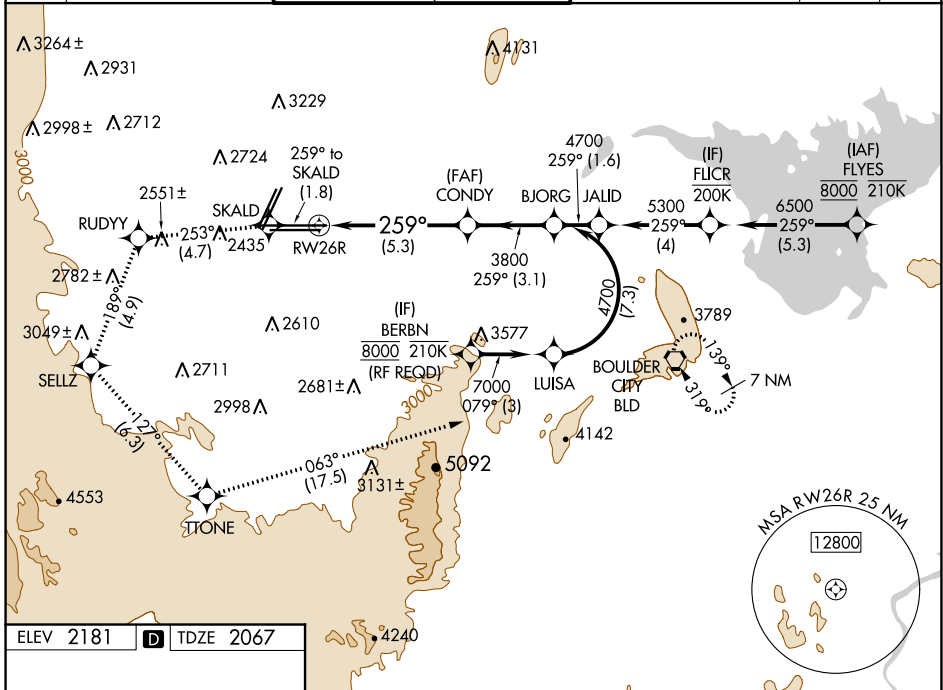


APP CRS	Rwy Idg	<b>12638</b>
<b>259°</b>	TDZE	<b>2067</b>
	Apt Elev	<b>2181</b>

# RNAV (RNP) RWY 26R

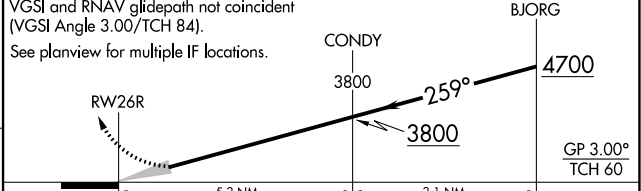
MC CARRAN INTL (LAS)

RNP AR APCH.		MALS	MISSED APPROACH: Climb to 7000 on the RNAV missed approach route to BLD VORTAC and hold. * Missed approach requires minimum climb of 235 feet per NM to 3200.			
For uncompensated Baro-VNAV systems, procedure NA below 0°C or above 54°C.						
D-ATIS	LAS VEGAS APP CON	LAS VEGAS TOWER		GND CON	CLNC DEL	CPDLC
<b>132.4</b>	<b>125.025 379.15</b> (West) <b>125.6 282.2</b> (East)	<b>118.75 257.8</b> (Rwy 1L/19R, 1R/19L) <b>119.9 257.8</b> (Rwy 8L/26R, 8R/26L)		<b>121.1 270.8</b> E of 1R/19L <b>121.9 254.3</b> W of 1R/19L	<b>118.0</b>	



ELEV 2181		TDZE 2067
-----------	--	-----------

7000	SKALD	RUDYY	SELZ	TTONE	BLD
↑		tr 253°		tr 127°	
fr 259°					



CATEGORY	A	B	C	D
RNP 0.30 DA*	2457-7/8 390 (300-7/8)			
RNP 0.30 DA	2507-1 440 (400-1)			

**AUTHORIZATION REQUIRED**

MIRL Rwy 1R-19L  
REIL Rws 1R, 8R, 19L and 19R  
HIRL Rws 1L-19R, 8L-26R and 8R-26L

SW-4, 20 MAY 2021 to 17 JUN 2021

SW-4, 20 MAY 2021 to 17 JUN 2021