

(RADYR1.RADYR) 21056

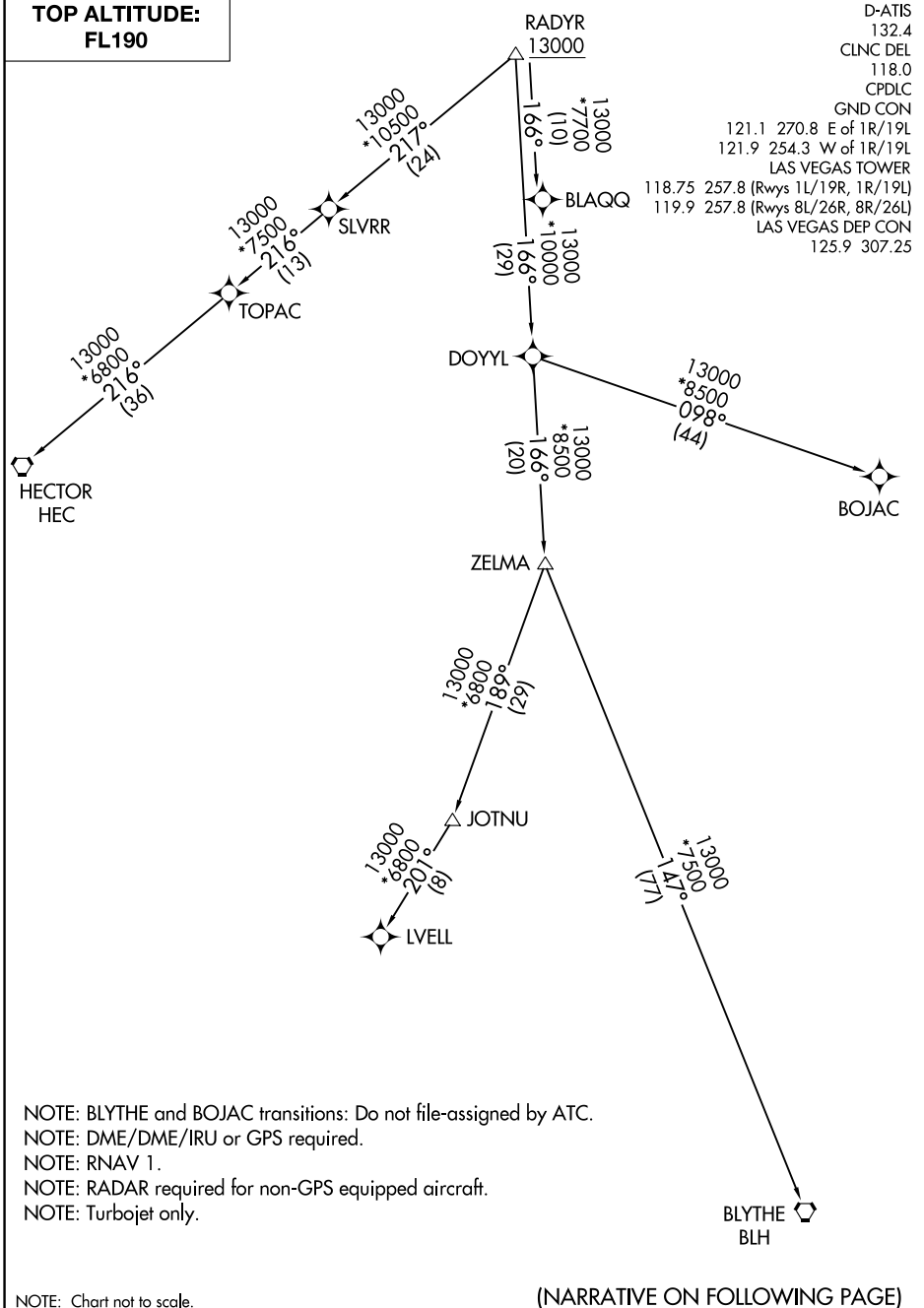
AL-662 (FAA)

MC CARRAN INTL (LAS)
LAS VEGAS, NEVADA

RADYR ONE DEPARTURE (RNAV) Transition Routes

**TOP ALTITUDE:
FL190**

D-ATIS 132.4
 CLNC DEL 118.0
 CPDLC
 GND CON 121.1 270.8 E of 1R/19L
 121.9 254.3 W of 1R/19L
 LAS VEGAS TOWER
 118.75 257.8 (Rwys 1L/19R, 1R/19L)
 119.9 257.8 (Rwys 8L/26R, 8R/26L)
 LAS VEGAS DEP CON 125.9 307.25



SW-4, 20 MAY 2021 to 17 JUN 2021

SW-4, 20 MAY 2021 to 17 JUN 2021

NOTE: BLYTHE and BOJAC transitions: Do not file-assigned by ATC.
 NOTE: DME/DME/IRU or GPS required.
 NOTE: RNAV 1.
 NOTE: RADAR required for non-GPS equipped aircraft.
 NOTE: Turbojet only.

NOTE: Chart not to scale.

(NARRATIVE ON FOLLOWING PAGE)

RADYR ONE DEPARTURE (RNAV) Transition Routes

LAS VEGAS, NEVADA
MC CARRAN INTL (LAS)

(RADYR1.RADYR) 25FEB21