

JOHKR ONE DEPARTURE (RNAV) Departure Routes

TAKEOFF MINIMUMS

- Rwy 1L: Standard with minimum climb of 514' per NM to 4900.
- Rwy 1R: Standard with minimum climb of 526' per NM to 4800.
- Rwys 8L/R: Standard with minimum climb of 500' per NM to 2682, then 219' per NM to 6300.
- Rwys 19L/R: Standard with minimum climb of 500' per NM to 2682, then 334' per NM to 8900.
- Rwys 26L/R: Standard with minimum climb of 500' per NM to 2682, then 345' per NM to 8900.

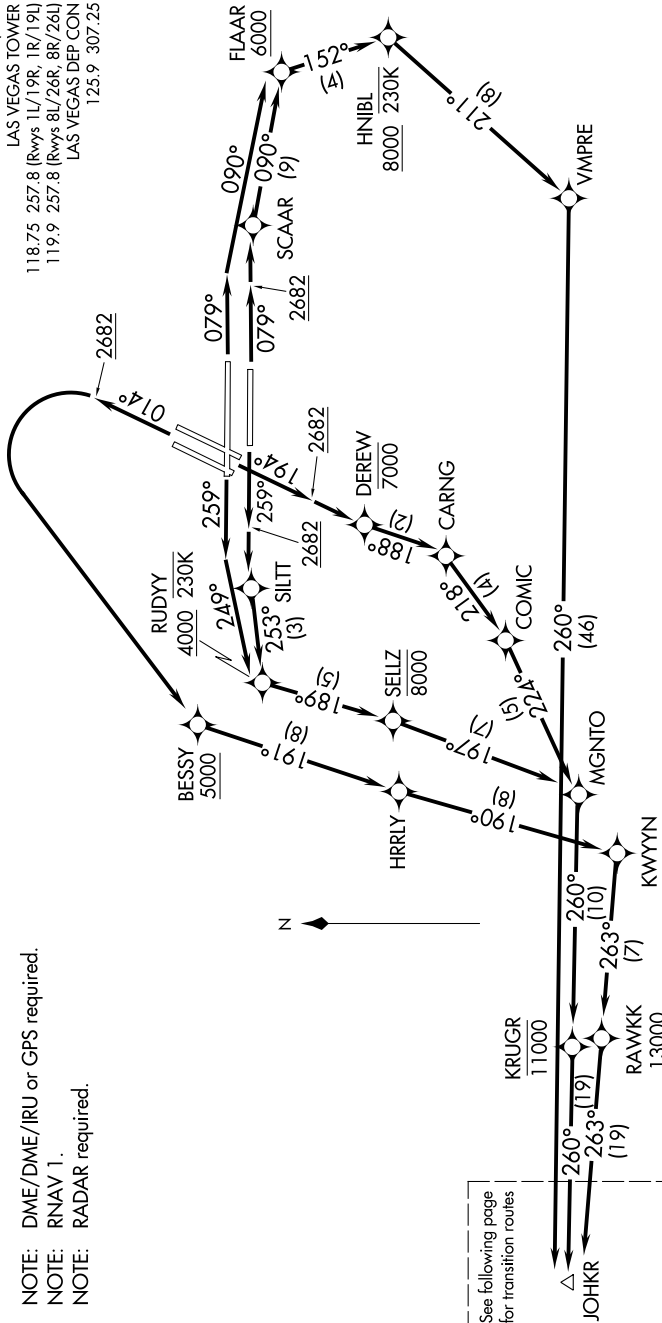
NOTE: DME/DME/IRU or GPS required.

NOTE: RNAV 1.

NOTE: RADAR required.

TOP ALTITUDE: FL190

- D-ATIS 132.4
- CINC DEL 118.0
- CPDLC 118.0
- GND CON 121.1 270.8 E of 1R/19L
- 121.9 254.3 W of 1R/19L
- LAS VEGAS TOWER 118.75 257.8 (Rwys 1L/19R, 1R/19L)
- 119.9 257.8 (Rwys 8L/26R, 8R/26L)
- LAS VEGAS DEP CON 125.9 307.25



See following page for transition routes

(CONTINUED ON FOLLOWING PAGE)

NOTE: Chart not to scale.