

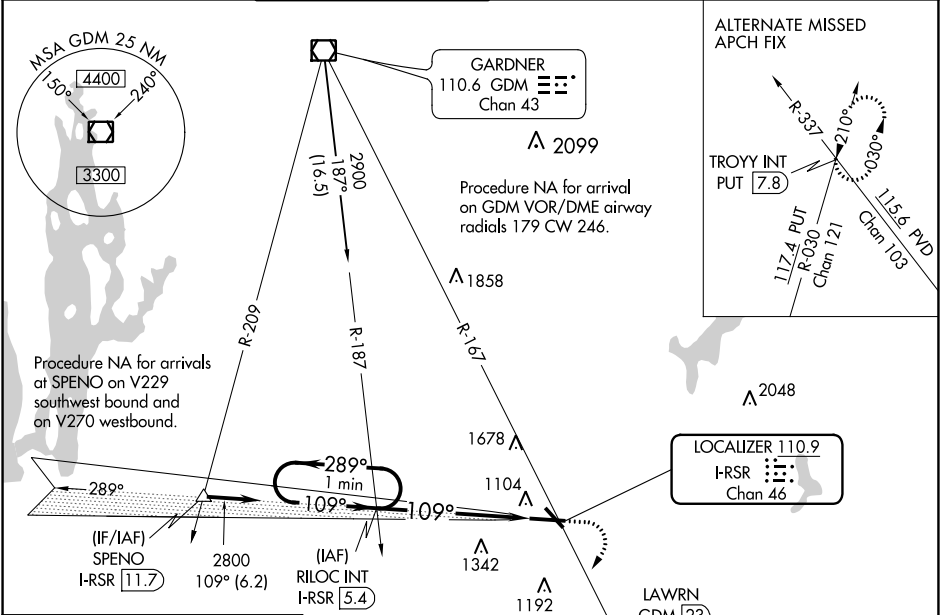
LOC/DME I-RSR 110.9 Chan 46	APP CRS 109°	Rwy ldg TDZE 7001 980	Apt Elev 1009
--	------------------------	---	-------------------------

ILS RWY 11 (CAT II & III)

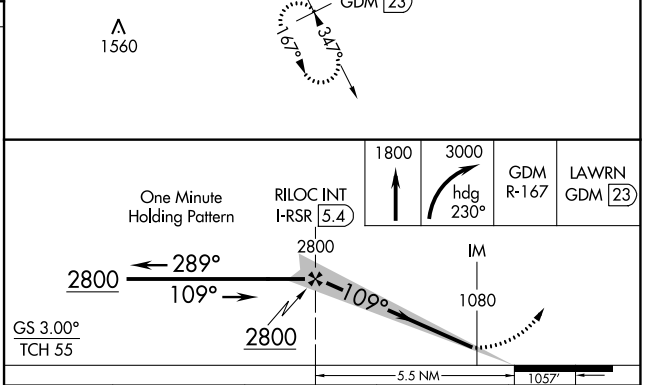
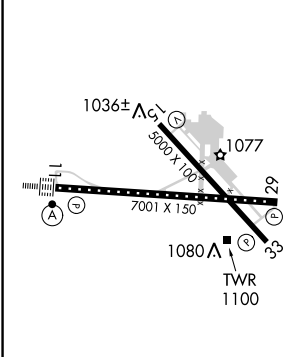
WORCESTER RGNL (ORH)

<p>▼ DME required. CAT II: RVR 1000 authorized with specific OPSPEC, MSPEC, or LOA approval and use of autoland or HUD to touchdown. Procedure NA when tower closed.</p> <p>▲ ALSF-2</p>	<p>MISSED APPROACH: Climb to 1800 then climbing right turn to 3000 on heading 230° and GDM VOR/DME R-167 to LAWWRN/GDM 23 DME and hold, continue climb-in-hold to 3000.</p>
--	---

ATIS 126.55	YANKEE APP CON 119.0 327.1	WORCESTER TOWER ★ 120.5 (CTAF) 263.0	GND CON 123.85	CLNC DEL 128.65	CLNC DEL 119.0 (When twr closed)	UNICOM 122.95
-----------------------	--------------------------------------	--	--------------------------	---------------------------	---	-------------------------



ELEV 1009	D	TDZE 980
-----------	----------	----------



CATEGORY	A	B	C	D
S-ILS 11	CAT II RA 119/12 100 DA 1080			
S-ILS 11	CAT III RVR 06			

CATEGORY II & III ILS - SPECIAL AIRCREW & AIRCRAFT CERTIFICATION REQUIRED

NE-1, 20 MAY 2021 to 17 JUN 2021

NE-1, 20 MAY 2021 to 17 JUN 2021