

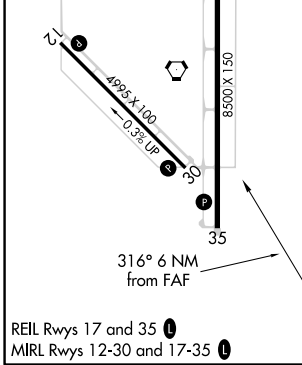
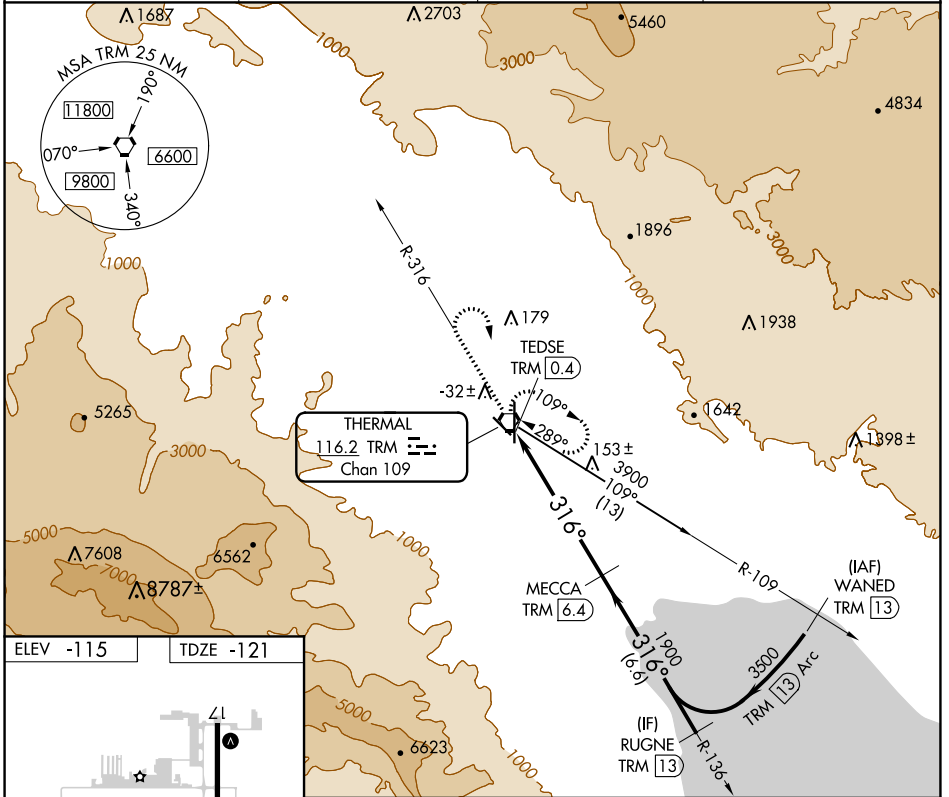
VORTAC TRM 116.2 Chan 109	APP CRS 316°	Rwy Idg TDZE -121 Apt Elev -115
---	------------------------	---

VOR RWY 30

JACQUELINE COCHRAN RGNL (TRM)

DME required.		MISSED APPROACH: Climb to 1300 on TRM VORTAC R-316 then climbing right turn to 5400 direct TRM VORTAC and hold, continue climb-in-hold to 5400.	
<p>▼ Rwy 30 helicopter visibility reduction below ¾ SM NA.</p>			

ASOS 118.325	SOCAL APP CON 135.275 251.1	CLNC DEL 120.225	UNICOM 123.0 (CTAF) 0
------------------------	---------------------------------------	----------------------------	---------------------------------



REIL Rwy 17 and 35	MIRL Rwy 12-30 and 17-35															
<table border="1"> <thead> <tr> <th>CATEGORY</th> <th>A</th> <th>B</th> <th>C</th> <th>D</th> </tr> </thead> <tbody> <tr> <td>S-30</td> <td>300-1 421 (500-1)</td> <td></td> <td>300-1¼ 421 (500-1¼)</td> <td></td> </tr> <tr> <td>CIRCLING</td> <td>320-1 435 (500-1)</td> <td>340-1 455 (500-1)</td> <td>460-1½ 575 (600-1½)</td> <td>780-3 895 (900-3)</td> </tr> </tbody> </table>		CATEGORY	A	B	C	D	S-30	300-1 421 (500-1)		300-1¼ 421 (500-1¼)		CIRCLING	320-1 435 (500-1)	340-1 455 (500-1)	460-1½ 575 (600-1½)	780-3 895 (900-3)
CATEGORY	A	B	C	D												
S-30	300-1 421 (500-1)		300-1¼ 421 (500-1¼)													
CIRCLING	320-1 435 (500-1)	340-1 455 (500-1)	460-1½ 575 (600-1½)	780-3 895 (900-3)												

SW-3, 20 MAY 2021 to 17 JUN 2021

SW-3, 20 MAY 2021 to 17 JUN 2021