

WAAS CH <b>82424</b> <b>W36A</b>	APP CRS <b>003°</b>	Rwy Idg TDZE Apt Elev	<b>4202</b> <b>1083</b> <b>1084</b>
--	------------------------	-----------------------------	---

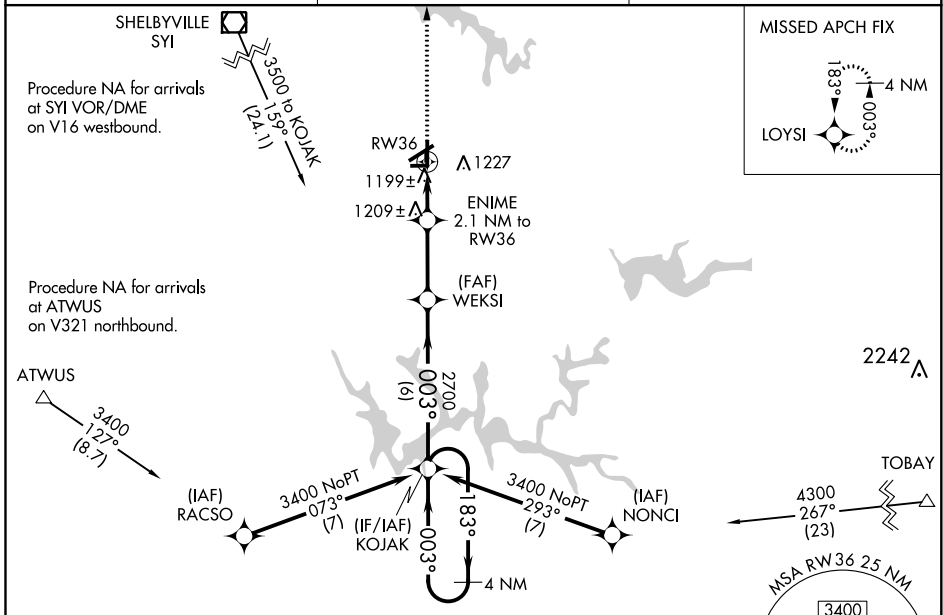
# RNAV (GPS) RWY 36

TULLAHOMA RGNL AIRPORT/WM NORTHERN FIELD (THA)

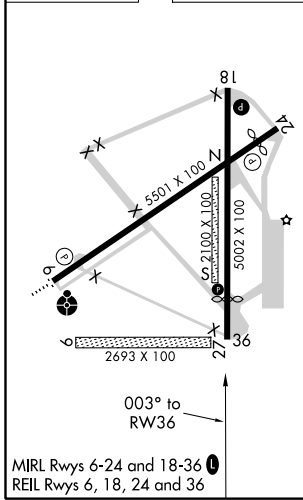
**NA** DME/DME RNP-0.3 NA. Helicopter visibility reduction below 3/4 SM NA. When local altimeter setting not received, use Nashville Intl altimeter setting and increase all MDA 200 feet, increase LP and LNAV Cat C/D visibility 5/8 mile, increase Circling Cat C visibility 1/4 mile and increase Circling Cat D visibility 1/2 mile. Circling NA to Rwy 9 and 27.

**MISSED APPROACH:**  
Climb to 3000 direct LOYSI and hold.

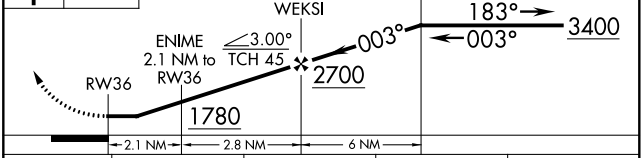
AWOS-3 <b>128.325</b>	MEMPHIS CENTER <b>128.15 323.125</b>	UNICOM <b>123.0 (CTAF)</b>
--------------------------	---	-------------------------------



ELEV 1084	TDZE 1083
-----------	-----------



3000 LOYSI VGSI and descent angles not coincident (VGSI Angle 3.00/TCH 42). 4 NM Holding Pattern



CATEGORY	A	B	C	D
LP MDA	1460-1		377 (400-1)	
LNAV MDA	1460-1		377 (400-1)	
<b>C</b> CIRCLING	1540-1 456 (500-1)	1560-1 476 (500-1)	1580-1½ 496 (500-1½)	1640-2 556 (600-2)

SE-1, 20 MAY 2021 to 17 JUN 2021

SE-1, 20 MAY 2021 to 17 JUN 2021