

APP CRS	Rwy Idg	4996
221°	TDZE	991
	Apt Elev	998

RNAV (GPS) Y RWY 21L

DEKALB-PEACHTREE (PDK)

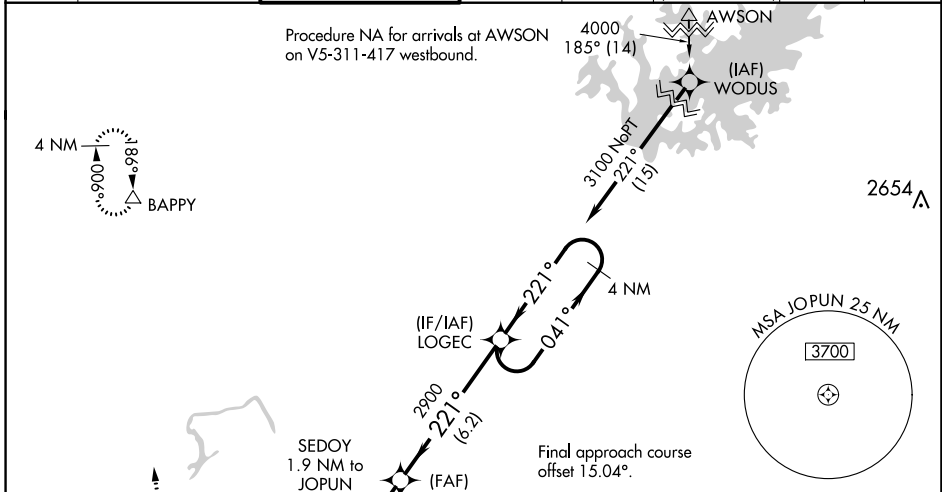
RNP APCH.

⚠ Circling Rwy 16, 34 NA at night. Baro-VNAV NA when using Fulton County Executive/ Charlie Brown Field altimeter setting. For uncompensated Baro-VNAV systems, LNAV/VNAV NA below 1°C or above 54°C. Rwy 21 helicopter visibility reduction below ¼ SM NA. For inop MALSF, increase LNAV/VNAV all Cats visibility to 1½ mile and LNAV Cats C/D visibility to 1½ mile. When local altimeter not received, use Fulton County Executive/Charlie Brown Field altimeter setting and increase LNAV/VNAV all Cats DA to 1505 and all MDA 60 feet; increase LNAV/VNAV all Cats visibility ½ mile, LNAV Cats C/D visibility ½ mile and Circling Cat C visibility ¼ mile. VDP NA when using Fulton County Airport-Brown Field altimeter setting. For inop MALSF when using Fulton County Executive/Charlie Brown Field altimeter setting, increase LNAV/VNAV Cat D visibility to 2 miles and LNAV Cat D visibility to 1½ mile.

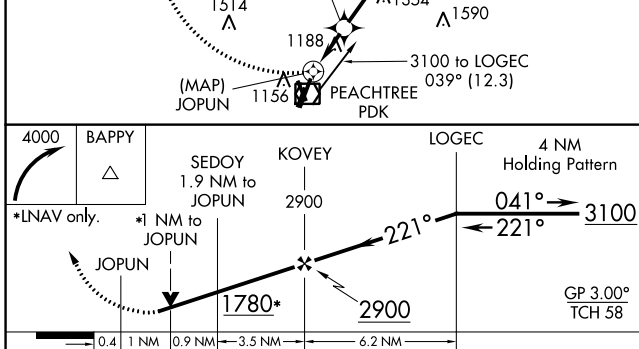
MALSF

MISSED APPROACH:
Climbing right turn to 4000 direct BAPPY and hold.

ATIS	ATLANTA APP CON	PEACHTREE TOWER ★	GND CON	CLNC DEL	CLNC DEL	UNICOM	120.0
128.4	126.975 239.275	120.9 (CTAF) 281.5	121.6	125.2	120.9 (When twr closed)	122.95	120.0



ELEV 998	D TDZE 991
----------	-------------------



TWR 1133

3L 3R

21L

16-34

HIRL Rwy 3R-21L

MIRL Rws 16-34 and 3L-21R

REIL Rws 3R and 34

CATEGORY	A	B	C	D
LNAV/VNAV DA	1461-1¼ 470 (500-1¼)			
LNAV MDA	1500-¾ 509 (600-¾)	1500-1¼ 509 (600-1¼)		
CIRCLING	1580-1 582 (600-1)	1840-2½ 842 (900-2½)	2060-3 1062 (1100-3)	

SE-4, 20 MAY 2021 to 17 JUN 2021

SE-4, 20 MAY 2021 to 17 JUN 2021