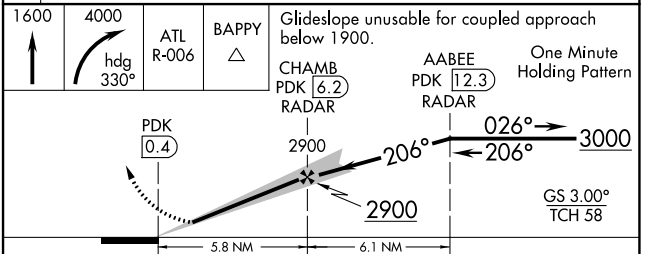
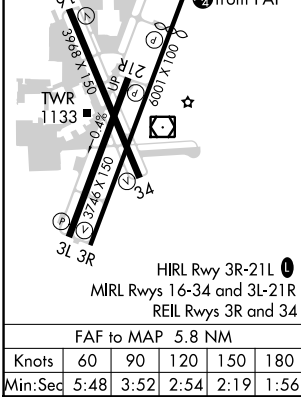
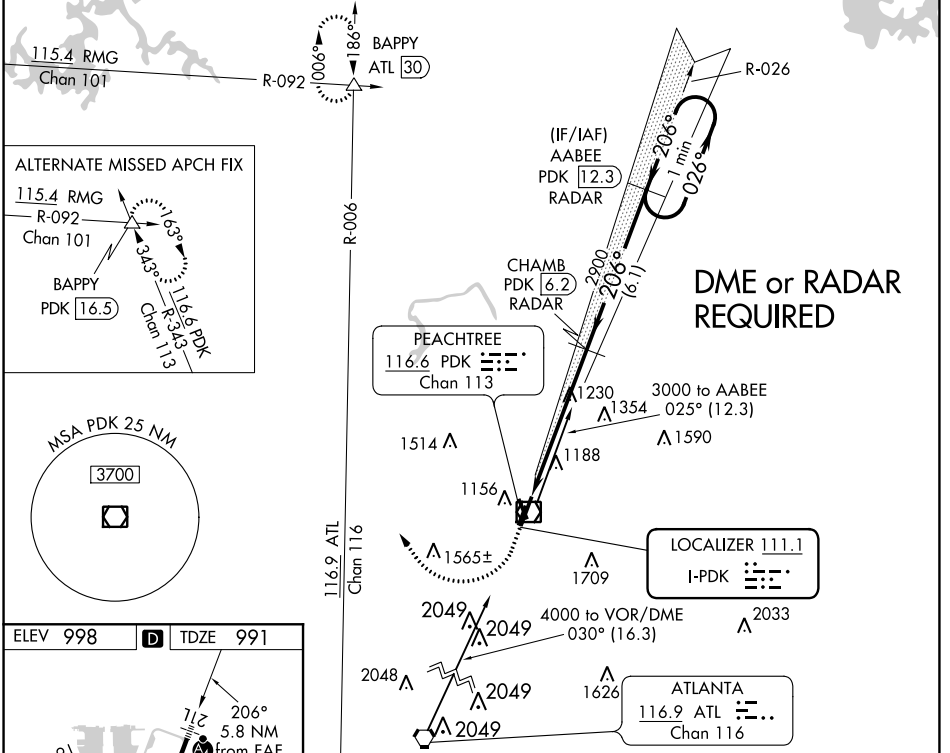


LOC I-PDK <b>111.1</b>	APP CRS <b>206°</b>	Rwy Idg TDZE Apt Elev	<b>4996</b> <b>991</b> <b>998</b>
---------------------------	------------------------	-----------------------------	---

# ILS or LOC RWY 21L

DEKALB-PEACHTREE (PDK)

<p>▼ Circling Rwy 16, 34 NA at night. Rwy 21L helicopter visibility reduction below ¾ SM NA. When local altimeter setting not received, use Fulton County Executive/Charlie Brown Field altimeter setting and increase S-ILS 21L DA to 1378 and all MDA 60 feet; increase S-ILS 21L all Cats visibility ½ mile, increase S-LOC 21L Cats C/D and Circling Cat C visibility ¼ mile.</p>		<p>MALSF</p>	<p>MISSED APPROACH: Climb to 1600 then climbing right turn to 4000 on heading 330° and ATL VORTAC R-006 to BAPPY INT/ATL 30 DME and hold.</p>				
ATIS <b>128.4</b>	ATLANTA APP CON <b>126.975 239.275</b>	PEACHTREE TOWER ★ <b>120.9 (CTAF) 281.5</b>	GND CON <b>121.6</b>	CLNC DEL <b>125.2</b>	CLNC DEL <b>120.9</b> (When twr closed)	UNICOM <b>122.95</b>	<b>120.0</b>



CATEGORY	A	B	C	D
S-ILS 21L		1334-7/8	343 (400-7/8)	
S-LOC 21L	1480-3/4	489 (500-3/4)	1480-1/8	489 (500-1/8)
☑ CIRCLING	1580-1	582 (600-1)	1840-2 1/2	2060-3

SE-4, 20 MAY 2021 to 17 JUN 2021

SE-4, 20 MAY 2021 to 17 JUN 2021