

APP CRS <b>303°</b>	Rwy Idg <b>6998</b>
	TDZE <b>2629</b>
	Apt Elev <b>2643</b>

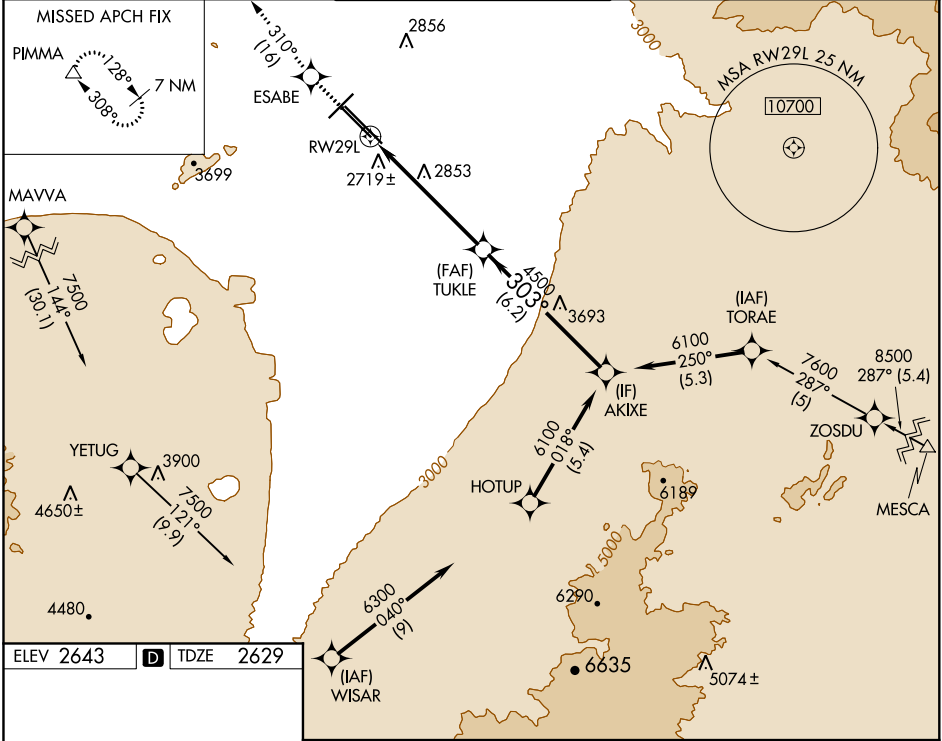
# RNAV (GPS) RWY 29L

TUCSON INTL (TUS)

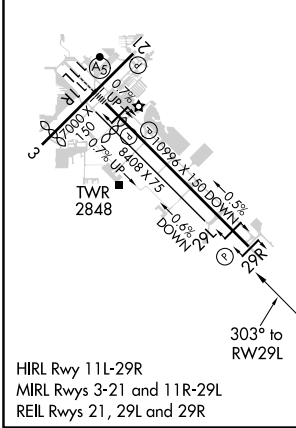
**▽** For uncompensated Baro-VNAV systems, LNAV/VNAV NA below -20°C (-4°F) or above 27°C (80°F). DME/DME RNP-0.3 NA. Helicopter visibility reduction below ¾ SM NA.

**MISSD APPROACH:** Climb to 6500 direct ESABE then climbing right turn on track 310° to PIMMA and hold.

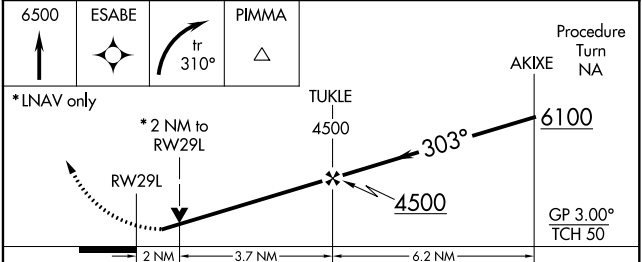
ATIS <b>123.8 279.65</b>	TUCSON APP CON <b>119.4 318.1</b>	TUCSON TOWER <b>118.3 257.8</b>	GND CON <b>124.4 348.6</b>	CLNC DEL <b>126.65 326.2</b>
-----------------------------	--------------------------------------	------------------------------------	-------------------------------	---------------------------------



ELEV 2643	<b>D</b>	TDZE 2629
-----------	----------	-----------



HIRL Rwy 11L-29R  
MIRL Rws 3-21 and 11R-29L  
REIL Rws 21, 29L and 29R



CATEGORY	A	B	C	D
LNAV/ VNAV	3040-1 <sup>3</sup> / <sub>8</sub> 411 (400-1 <sup>3</sup> / <sub>8</sub> )			
LNAV MDA	3320-1	691 (700-1)	3320-2	691 (700-2)
CIRCLING	3320-1	677 (700-1)	3320-2 677 (700-2)	3320-2 <sup>1</sup> / <sub>4</sub> 677 (700-2 <sup>1</sup> / <sub>4</sub> )

SW-4, 20 MAY 2021 to 17 JUN 2021

SW-4, 20 MAY 2021 to 17 JUN 2021