

LOC/DME I-TUS 111.7 Chan 54	APP CRS 303°	Rwy Idg TDZE 10996 2643 Apt Elev 2643
---	------------------------	---

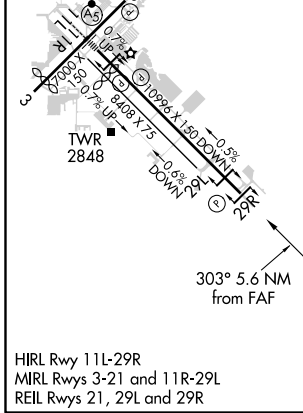
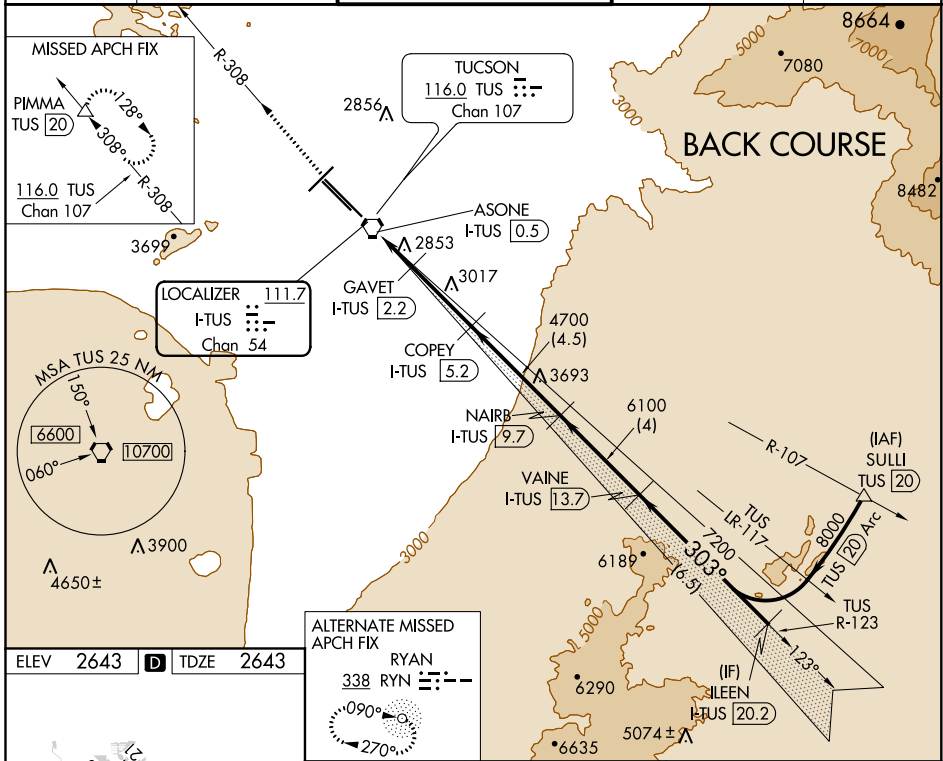
LOC BC RWY 29R

TUCSON INTL (TUS)

DME required for procedure entry. DME required.

MISSED APPROACH: Climb to 6800 on TUS VORTAC R-308 to PIMMA/TUS VORTAC 20 DME and hold.

ATIS 123.8 279.65	TUCSON APP CON 119.4 318.1	TUCSON TOWER 118.3 257.8	GND CON 124.4 348.6	CLNC DEL 126.65 326.2
-----------------------------	--------------------------------------	------------------------------------	-------------------------------	---------------------------------



ELEV 2643	D	TDZE 2643
ALTERNATE MISSED APCH FIX RYAN 338 RYN	RYAN 338 RYN	
6800 TUS R-308	PIMMA △	Use I-TUS DME when on the localizer course. VGSI and descent angles not coincident (VGSI Angle 3.00/TCH 81). Disregard glide slope indications.
ASONE I-TUS 0.5	GAVET I-TUS 2.2	COPEY I-TUS 5.2
VAINE I-TUS 13.7	NAIRB I-TUS 9.7	VAINE I-TUS 13.7
ILEEN I-TUS 20.2	ILEEN I-TUS 20.2	
3640	4700	6100
7200	8000	
0.9 NM	1.7 NM	3 NM
		4.5 NM
		4 NM
		6.5 NM

CATEGORY	A	B	C	D	E
S-29R	3140-1	497 (500-1)	3140-1 ³ / ₈	497 (500-1 ³ / ₈)	
CIRCLING	3160-1 517 (600-1)	3220-1 577 (600-1)	3220-1 ¹ / ₂ 577 (600-1 ¹ / ₂)	3220-2 577 (600-2)	3800-3 1157 (1200-3)

TUCSON, ARIZONA
Amdt 8B 20JUN19

32°07'N-110°56'W

TUCSON INTL (TUS) LOC BC RWY 29R

SW-4, 20 MAY 2021 to 17 JUN 2021

SW-4, 20 MAY 2021 to 17 JUN 2021